

for sale

guide price **£475,000**



Butterside Road Kingsnorth Ashford TN23 3PD

Guide Price £475,000 - £500,000... Four Bedroom Detached Family Home - Double Garage, Driveway & Additional Parking Space - Lounge, Dining Room & Study - Kitchen/Diner - Beautifully Presented Throughout - Recently Renovated En-suite Bathroom - Popular Park Farm Location



Butterside Road Kingsnorth Ashford TN23 3PD

Entrance Hall

Cloakroom

Study

7' 8" x 9' 3" (2.34m x 2.82m)

Lounge

16' 3" x 12' 8" (4.95m x 3.86m)

Dining Room

9' x 11' (2.74m x 3.35m)

Kitchen / Diner

8' 5" x 15' 7" (2.57m x 4.75m)



First Floor

Bedroom 1

12' 3" x 13' (3.73m x 3.96m)

En-Suite

Bedroom 2

9' 3" x 12' 3" (2.82m x 3.73m)

Bedroom 3

8' 9" x 11' 11" (2.67m x 3.63m)

Bedroom 4

11' widest x 9' 6" (3.35m widest x 2.90m)

Bathroom

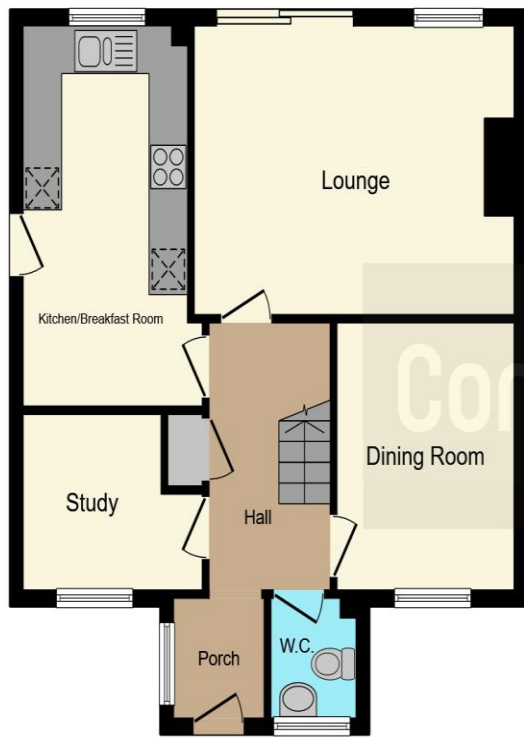
Outside

Front & Rear Garden

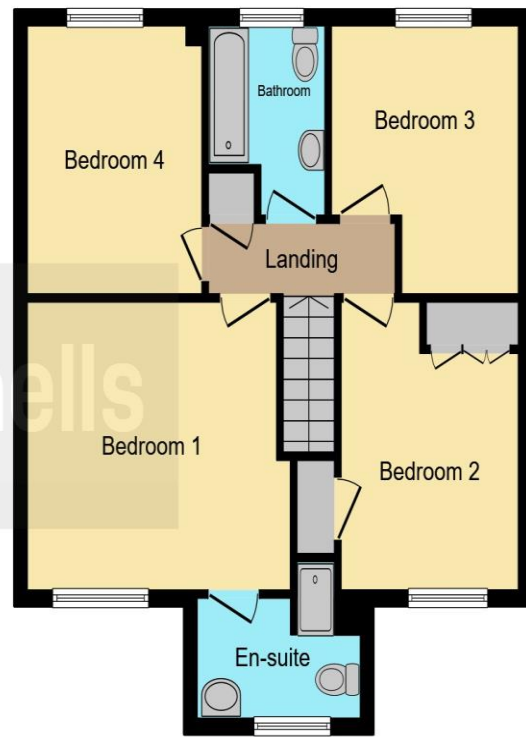
Double Garage

Driveway





Ground Floor



First Floor

This floorplan is for illustrative purposes only and is not drawn to scale. Measurements, floor-areas, openings and orientations are approximate. They should not be relied upon for any purpose and do not form any part of an agreement. No liability is taken for any error or mis-statement. All parties must rely on their own inspections.

To view this property please contact Connells on

T 01233 502020
E parkfarm@connells.co.uk

Unit 3 Moatfield Meadow Kingsnorth
 ASHFORD TN23 3LU

Property Ref: PFM405222 - 0006

Tenure: Freehold

EPC Rating: D

view this property online connells.co.uk/Property/PFM405222



1. MONEY LAUNDERING REGULATIONS Intending purchasers will be asked to produce identification documentation at a later stage and we would ask for your co-operation in order that there will be no delay in agreeing the sale. 2. These particulars do not constitute part or all of an offer or contract. 3. The measurements indicated are supplied for guidance only and as such must be considered incorrect. Potential buyers are advised to recheck measurements before committing to any expense. 4. We have not tested any apparatus, equipment, fixtures, fittings or services and it is in the buyers interest to check the working condition of any appliances.

Connells Residential is registered in England and Wales under company number 1489613, Registered Office is Cumbria House, 16-20 Hockliffe Street, Leighton Buzzard, Bedfordshire, LU7 1GN. VAT Registration Number is 500 2481 05.

see all our properties at www.connells.co.uk | www.rightmove.co.uk | www.zoopla.co.uk