

for sale

£500,000



## Barracks Close Folkestone CT20 3FF

Connells are delighted to offer to the market this stunning four bedroom detached family home located in an exclusive private close of just eight homes. For your chance to view, please call sole agent Connells now to arrange a viewing.



# Barracks Close Folkestone CT20 3FF

## Cloakroom

## Lounge

12' 2" x 19' 1" ( 3.71m x 5.82m )

## Dining Room

9' 6" x 19' 1" ( 2.90m x 5.82m )

## Kitchen

9' 8" x 13' 2" ( 2.95m x 4.01m )



## First Floor

### Landing

#### Bedroom 1

12' 2" max x 13' 6" max ( 3.71m max x 4.11m max )

#### Bedroom 2

10' 11" max x 10' 9" max ( 3.33m max x 3.28m max )

#### Bedroom 3

13' 1" max x 9' 8" max ( 3.99m max x 2.95m max )

#### Bedroom 4

8' max x 8' 4" max ( 2.44m max x 2.54m max )

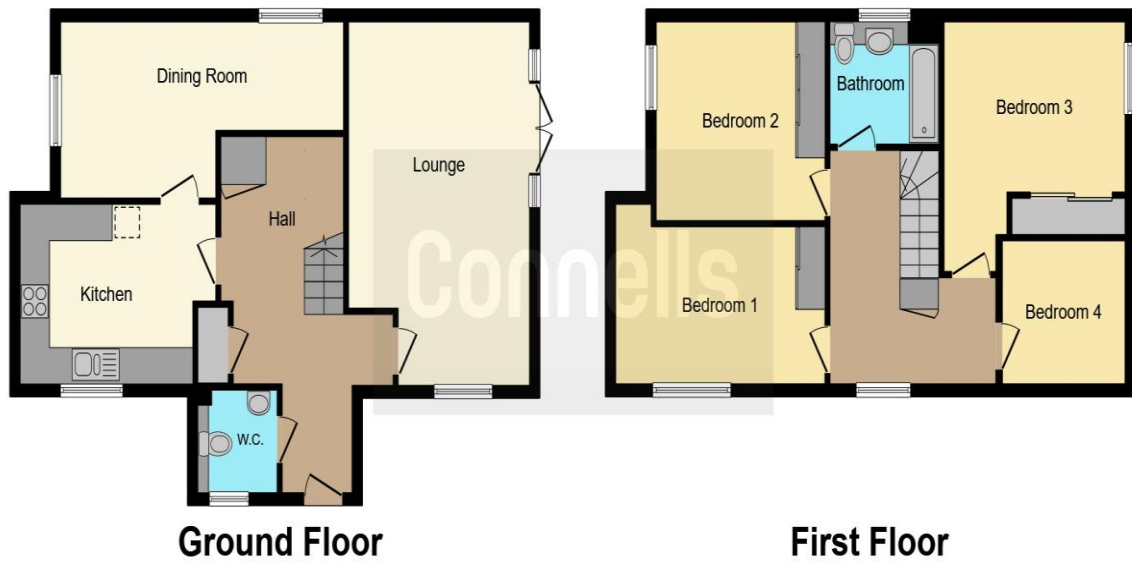
### Bathroom

## Outside

### Rear Garden

### Parking





This floorplan is for illustrative purposes only and is not drawn to scale. Measurements, floor-areas, openings and orientations are approximate. They should not be relied upon for any purpose and do not form any part of an agreement. No liability is taken for any error or mis-statement. All parties must rely on their own inspections.

To view this property please contact Connells on

**T 01233 502020**  
**E [parkfarm@connells.co.uk](mailto:parkfarm@connells.co.uk)**

Unit 3 Moatfield Meadow Kingsnorth  
 ASHFORD TN23 3LU

Property Ref: PFM404589 - 0004

**Tenure:** Freehold

**EPC Rating:** B

**view this property online [connells.co.uk/Property/PFM404589](http://connells.co.uk/Property/PFM404589)**



1. MONEY LAUNDERING REGULATIONS Intending purchasers will be asked to produce identification documentation at a later stage and we would ask for your co-operation in order that there will be no delay in agreeing the sale. 2. These particulars do not constitute part or all of an offer or contract. 3. The measurements indicated are supplied for guidance only and as such must be considered incorrect. Potential buyers are advised to recheck measurements before committing to any expense. 4. We have not tested any apparatus, equipment, fixtures, fittings or services and it is in the buyers interest to check the working condition of any appliances.

Connells Residential is registered in England and Wales under company number 1489613, Registered Office is Cumbria House, 16-20 Hockliffe Street, Leighton Buzzard, Bedfordshire, LU7 1GN. VAT Registration Number is 500 2481 05.

see all our properties at [www.connells.co.uk](http://www.connells.co.uk) | [www.rightmove.co.uk](http://www.rightmove.co.uk) | [www.zoopla.co.uk](http://www.zoopla.co.uk)