



WHITEGABLES

16 KIRKVIEW CRESCENT, NEWTON MEARNs

www.corumproperty.co.uk





4 | BEDROOMS

3 | BATHROOMS

3 | PUBLIC ROOMS

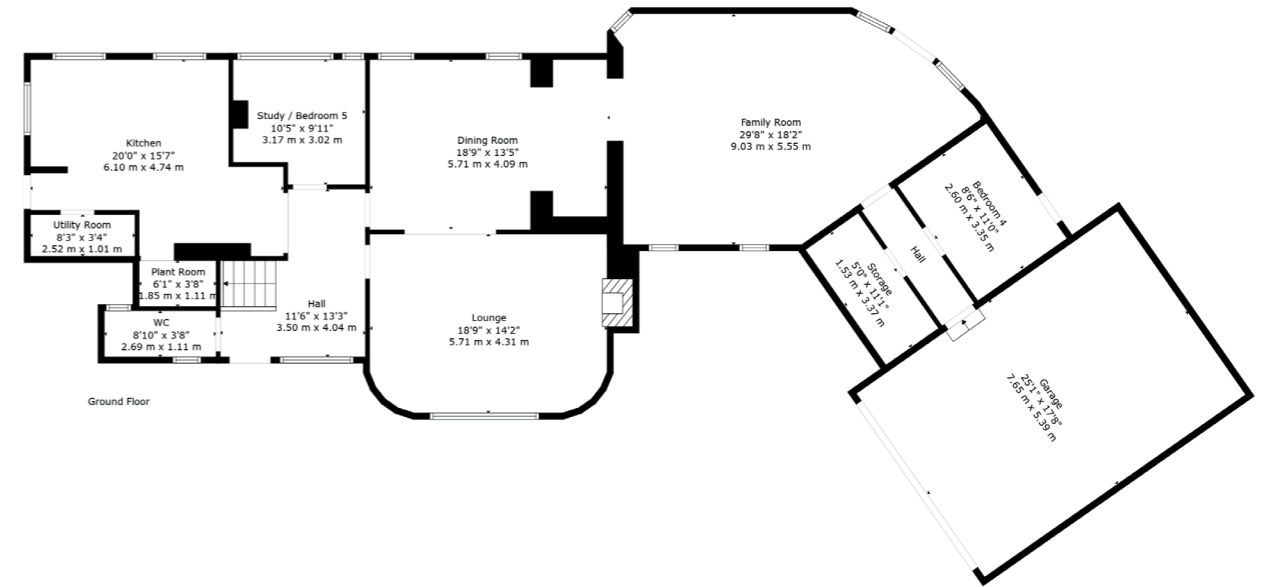
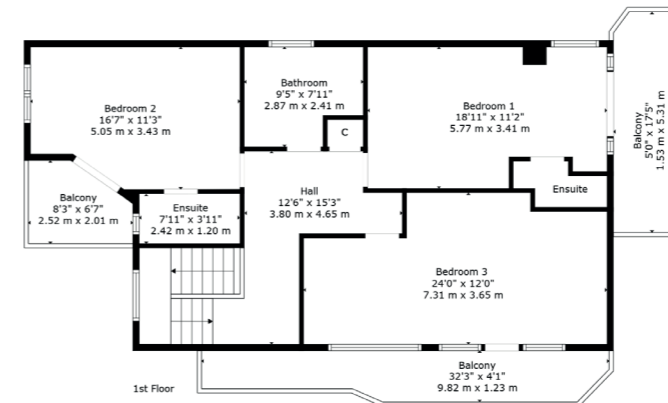
A beautiful art deco villa set within private landscaped garden grounds.

Whitegables is an impressive, detached villa which is distinguished by its art deco design. Offering impressive and extended accommodation encompassed over two levels, the subjects are set within generous landscaped, corner garden grounds and present a unique opportunity to the local marketplace.

The ground floor accommodation extends to traditional style reception hallway with WC adjacent, beautiful formal lounge with feature fireplace and sliding doors into lovely formal dining room, and the property has been extended to provide a wonderful family room with direct access out to the gardens. There is a downstairs bedroom with access to gardens, useful storage room, and integral access to double garage fitted with power and light. The ground floor is completed by a useful study/fifth bedroom, spacious dining kitchen with a range of wall and base mounted units with access to gardens and useful utility room adjacent. Upstairs a bright and spacious upper hallway gives access to generous principal bedroom with en-suite shower room and access to south facing terrace, second double bedroom with en-suite and balcony, third bedroom with access to balcony and main family bathroom completes this level. The specification includes a system of gas central heating, double glazing, hardwood flooring, stained glass detail, lovely, detailed cornice/plasterwork and beautiful art deco styling.

Externally the property is set within mature, level and beautifully landscaped garden grounds. Level lawned area, composite deck area and the gardens retain a high degree of privacy by virtue of border hedges and planting. Spacious horseshoe driveway to front providing ample parking for multiple vehicles.





Newton Mearns is one of the most sought-after suburbs within the south side of Glasgow. The property is superbly placed for a wide range of amenities and indeed nationally recognised schooling. The property is a short distance away from excellent shopping at The Avenue at Mearns Cross and Greenlaw Village. There are an abundance of sports and recreational facilities found within the district which include excellent golf courses, parks, tennis clubs and there are a variety of country pursuits found nearby. Local train stations include Whitecraigs Station and Patterton Station.

NM4568 | Sat Nav: Whitegables, 16 Kirkview Crescent, Newton Mearns, G77 5DD

For the full home report visit www.corumproperty.co.uk

* All measurements and distances are approximate Floorplans are for illustration purposes and may not be to scale.



WE'RE **SOLD** ON
YOUR FUTURE



Corum Newton Mearns
134 Ayr Road, Newton Mearns, G77 6EG

Tel: 0141 639 5888

Email: n.mearns@corumproperty.co.uk

www.corumproperty.co.uk