



46 NETHERPLACE ROAD

NEWTON MEARNS

www.corumproperty.co.uk



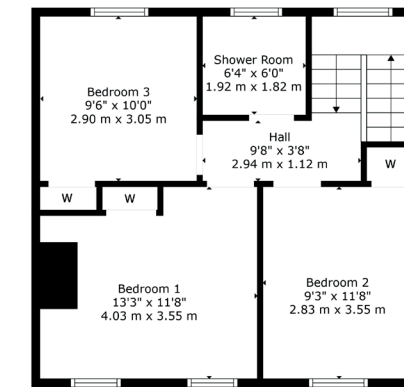
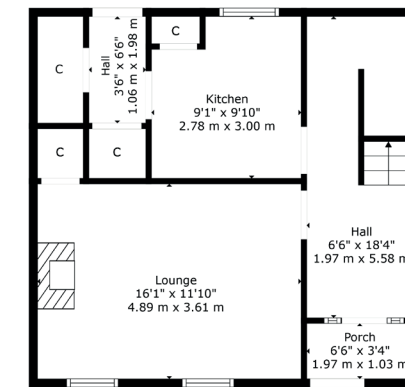
3 | BEDROOMS
1 | BATHROOM
1 | PUBLIC ROOM

An impressive traditional style semi detached villa within larger style garden grounds

- Three well proportioned bedrooms.
- Private mature gardens.
- Double glazing and gas central heating.
- Driveway parking.
- Great location for local amenities and high achieving schooling

Amenities

Newton Mearns is one of the most sought after suburbs within the south side of Glasgow. The property is superbly placed for a wide range of amenities and indeed nationally recognised schooling. The property is a short distance away from excellent shopping at The Avenue at Mearns Cross and Greenlaw Village. There are an abundance of sports and recreational facilities found within the district which include excellent golf courses, parks, tennis clubs and there are a variety of country pursuits found nearby. Local train stations include Patterson Station and Whitecraigs Station.



Sat Nav:
 46 Netherplace Road, Newton Mearns, G77 6DF

NM4501

*All measurements and distances are approximate. Floorplans are for illustration purposes and may not be to scale.

For the full home report visit
www.corumproperty.co.uk



WE'RE **SOLD** ON
YOUR FUTURE



Corum Newton Mearns
134 Ayr Road, Newton Mearns, G77 6EG

Tel: 0141 639 5888

Email: n.mearns@corumproperty.co.uk

www.corumproperty.co.uk