



# 1/1 8 JENNY LIND COURT

THORNLIEBANK

[www.corumproperty.co.uk](http://www.corumproperty.co.uk)



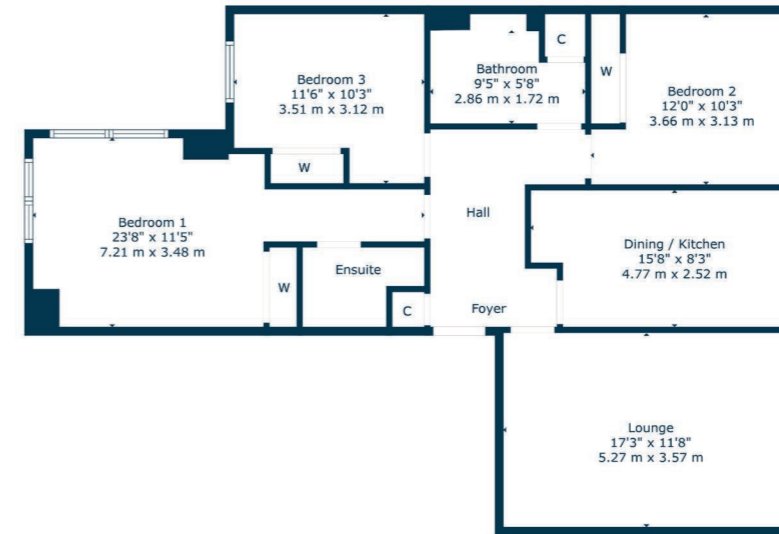
**3 | BEDROOMS**  
**2 | BATHROOMS**  
**1 | PUBLIC ROOM**

This fabulous first floor, three bedroom apartment offers modern, stylish accommodation which is bright and airy whilst conveniently located.

- Larger style three-bedroom apartment.
- First floor.
- Generous parking for resident's and guests.
- Fully modernised throughout.
- Communal garden grounds.
- Great location for local amenities and transport links.

**Amenities**

Perfectly placed to take advantage of all local amenities in nearby Giffnock, Newton Mearns and Thornliebank. The development is perfectly placed for a variety of amenities which include Mearns Cross Shopping Centre which is a short drive away, Greenlaw Village which offers Waitrose and excellent further shopping facilities, nearby motorway links and Deaconsbank Golf course and Patterton Train Station are a short distance away. An abundance of sports and leisure facilities are available within East Renfrewshire including David Lloyd Sports Club, Whitecraigs Golf Club, Giffnock and Whitecraigs Tennis Clubs and Rouken Glen Park.



**Sat Nav:**  
 1/1 8 Jenny Lind Court, Thornliebank G46 8QH

**NM4424**

\*All measurements and distances are approximate. Floorplans are for illustration purposes and may not be to scale.

For the full home report visit  
[www.corumproperty.co.uk](http://www.corumproperty.co.uk)



WE'RE **SOLD** ON  
YOUR FUTURE



Corum Newton Mearns  
134 Ayr Road, Newton Mearns, G77 6EG

**Tel:** 0141 639 5888

**Email:** [n.mearns@corumproperty.co.uk](mailto:n.mearns@corumproperty.co.uk)

[www.corumproperty.co.uk](http://www.corumproperty.co.uk)