



18 GOWANLEA DRIVE

GIFFNOCK

www.corumproperty.co.uk



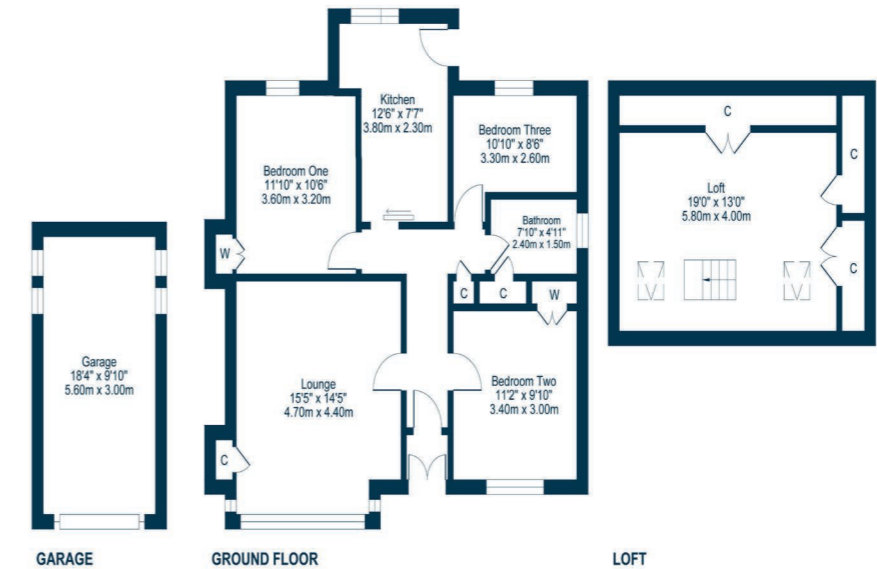
3 | BEDROOMS
1 | BATHROOM
1 | PUBLIC ROOM

A traditional semi-detached bungalow set within level, south facing private gardens.

- An all on the level bungalow within a much admired quiet setting.
- Great scope for refurbishment, redesign and upgrading.
- Wonderful location for local amenities, high achieving schooling and transport links.
- Lovely, secluded, sheltered gardens with driveway and garage.
- Large, floored, undeveloped attic space.

Amenities

Giffnock continues to be one of the most desirable residential suburbs on Glasgow's south side. A haven for young growing families, the district is synonymous with some of the best schooling in the West of Scotland. Moreover, there are excellent transport links via bus and train close at hand (Giffnock Station), in addition to local motorway links (M77/M8) providing swift access to the city centre and Ayrshire. There are numerous independent shops, restaurants, and delicatessens only a short walk away. An abundance of sports and leisure facilities are available within East Renfrewshire including David Lloyd Sports Club and Pure Gym, numerous golf clubs, Giffnock and Whitecraigs Tennis Clubs and Rouken Glen Park which was voted UK's Best Park of 2016.



Sat Nav:
 18 Gowanlea Drive, Giffnock, G46 6HN

NM4429

*All measurements and distances are approximate. Floorplans are for illustration purposes and may not be to scale.

For the full home report visit
www.corumproperty.co.uk



WE'RE **SOLD** ON
YOUR FUTURE



Corum Newton Mearns
134 Ayr Road, Newton Mearns, G77 6EG

Tel: 0141 639 5888

Email: n.mearns@corumproperty.co.uk

www.corumproperty.co.uk