



# 45 MCLAREN COURT

GIFFNOCK

[www.corumproperty.co.uk](http://www.corumproperty.co.uk)



2 | BEDROOMS

1 | BATHROOM

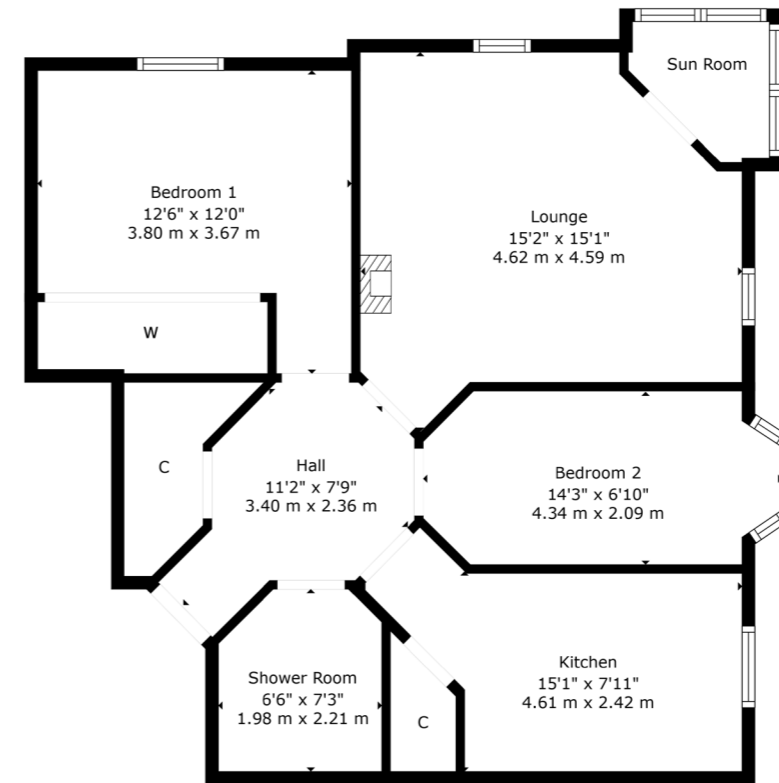
1 | PUBLIC ROOM

Corum are delighted to present to the market this truly wonderful example of a retirement property that is set within delightful residents' garden grounds and is centrally located for all Giffnock has to offer.

- Retirement apartment within the heart of Giffnock.
- A landmark, iconic modern development with walking distance to all Giffnock amenities.
- Third floor flat purpose built for independent retirement living.
- Spacious lounge with feature corner sunroom with great south facing aspects.
- Residents' gardens and parking.

#### Amenities

Giffnock continues to be one of the most desirable residential suburbs on Glasgow's south side with excellent transport links via bus and train close at hand, in addition to local motorway links (M77/M8) providing swift access to the city centre and Ayrshire. There are two train stations within close proximity, Whitecraigs Train Station and Giffnock Train Station. There are numerous independent shops, restaurants and delicatessens only a short walk away. An abundance of sports and leisure facilities are available within East Renfrewshire including David Lloyd Sports Club, Nuffield Health Gym, Whitecraigs Golf Club, Giffnock and Whitecraigs Tennis Clubs and Rouken Glen Park.



Sat Nav:  
45 McLaren Court, Giffnock, G46 6UF

NM4396

\*All measurements and distances are approximate.  
Floorplans are for illustration purposes and may not be to scale.

For the full home report visit  
[www.corumproperty.co.uk](http://www.corumproperty.co.uk)



WE'RE **SOLD** ON  
YOUR FUTURE



C O R U M

Corum Newton Mearns  
134 Ayr Road, Newton Mearns, G77 6EG

**Tel:** 0141 639 5888

**Email:** [n.mearns@corumproperty.co.uk](mailto:n.mearns@corumproperty.co.uk)

[www.corumproperty.co.uk](http://www.corumproperty.co.uk)