



G/1, 2 KNIGHTS GROVE

NEWTON MEARNS

www.corumproperty.co.uk





3 | BEDROOMS

2 | BATHROOMS

1/2 | PUBLIC ROOMS

A simply stunning, contemporary ground floor apartment with private balcony.

This ground floor apartment delivers a stunning interior that has been completely remodelled and upgraded by the present owners. Forming part of this much admired Westpoint Homes development, the setting provides easy access to local amenities including Patterson Train Station that is nearby and of course the Newton Mearns area provides tremendous local amenities, transport links and motorway links.

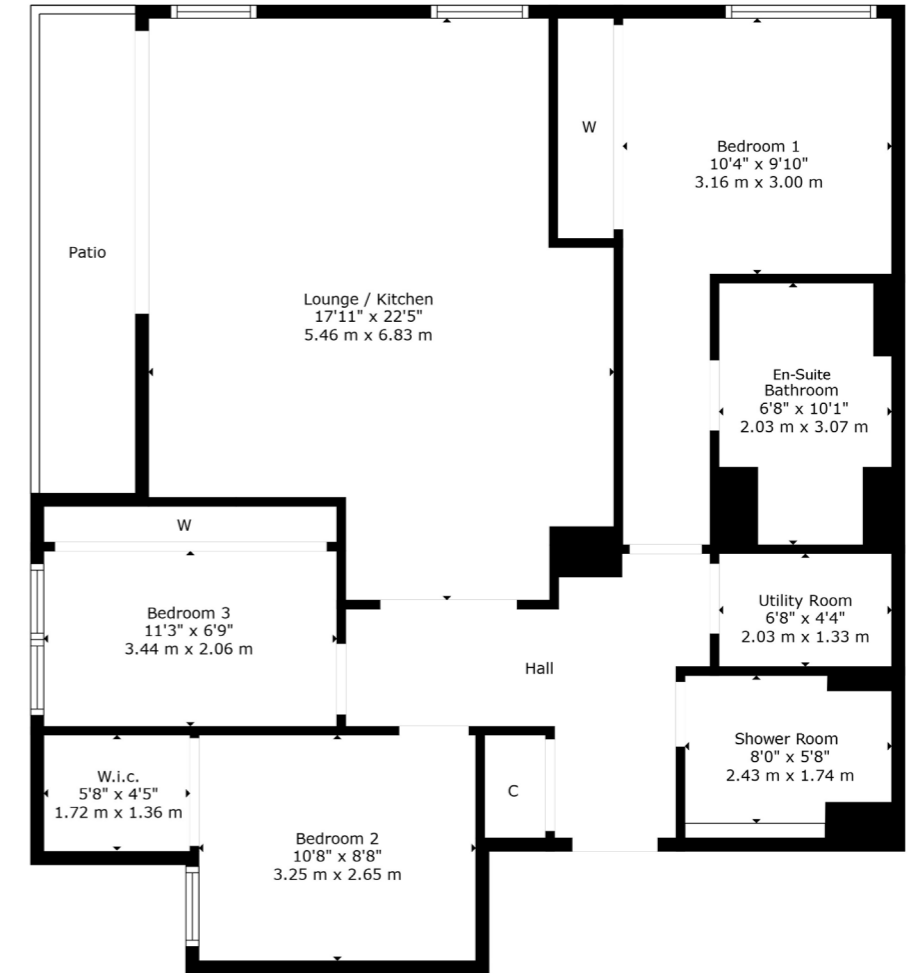
The flat is entered via a beautiful residents entrance via security entrance system, and the flat on the ground floor offers a stunning reception hallway with fully fitted storage facility and separate utility/laundry room with extra storage, beautifully appointed shower room with WC and wash hand basin and contemporary tiling, an open plan living area combines dining and the kitchen has been completely remodelled and upgraded by Creative Design, has feature central island unit with breakfasting bar and a full range of integrated Neff appliances, contemporary lighting, and bespoke built in storage in addition to feature media wall with further storage and wall mounted TV (included). Dual aspect area with shutters providing extra security and privacy and access to private balcony. The principal bedroom is beautifully appointed with extensive fitted storage, and concealed TV, fully fitted en-suite bathroom with contemporary fittings and built in TV. There are two further bedrooms both with extensive built in bespoke storage.

Notable upgrades include enhanced lighting throughout the flat, extra bespoke built in storage, fully upgraded kitchen with Quooker tap, Neff appliances including double oven and grill, microwave, dishwasher, warming drawer, coffee machine and a further built in drinks fridge. There is a full Sonos sound system integrated in the apartment which will be included.

Delightful residents' gardens with the flat having two private parking spaces.

It should be noted our client owns a single lock up garage that is found within the adjacent development at Bluebell Drive that can be made available by separate negotiation.





The property is superbly located for nearby high achieving primary and secondary schooling. Mearns Cross Shopping Centre and Greenlaw Village are both a short distance away, and retail outlets, motorway, road and train links (Patterton Station) providing swift access to the city centre are within easy reach. There is a myriad of sport and leisure facilities available within the area and the property is also a short distance away from the countryside and equestrian facilities.

NM4371 | Sat Nav: 2 Knights Grove, Newton Mearns, G77 6GP

For the full home report visit www.corumproperty.co.uk

* All measurements and distances are approximate Floorplans are for illustration purposes and may not be to scale.



WE'RE **SOLD** ON
YOUR FUTURE



Corum Newton Mearns
134 Ayr Road, Newton Mearns, G77 6EG

Tel: 0141 639 5888

Email: n.mearns@corumproperty.co.uk

www.corumproperty.co.uk