



33 CASTLE ROAD

NEWTON MEARNS

www.corumproperty.co.uk





3/4 | BEDROOMS

2 | BATHROOMS

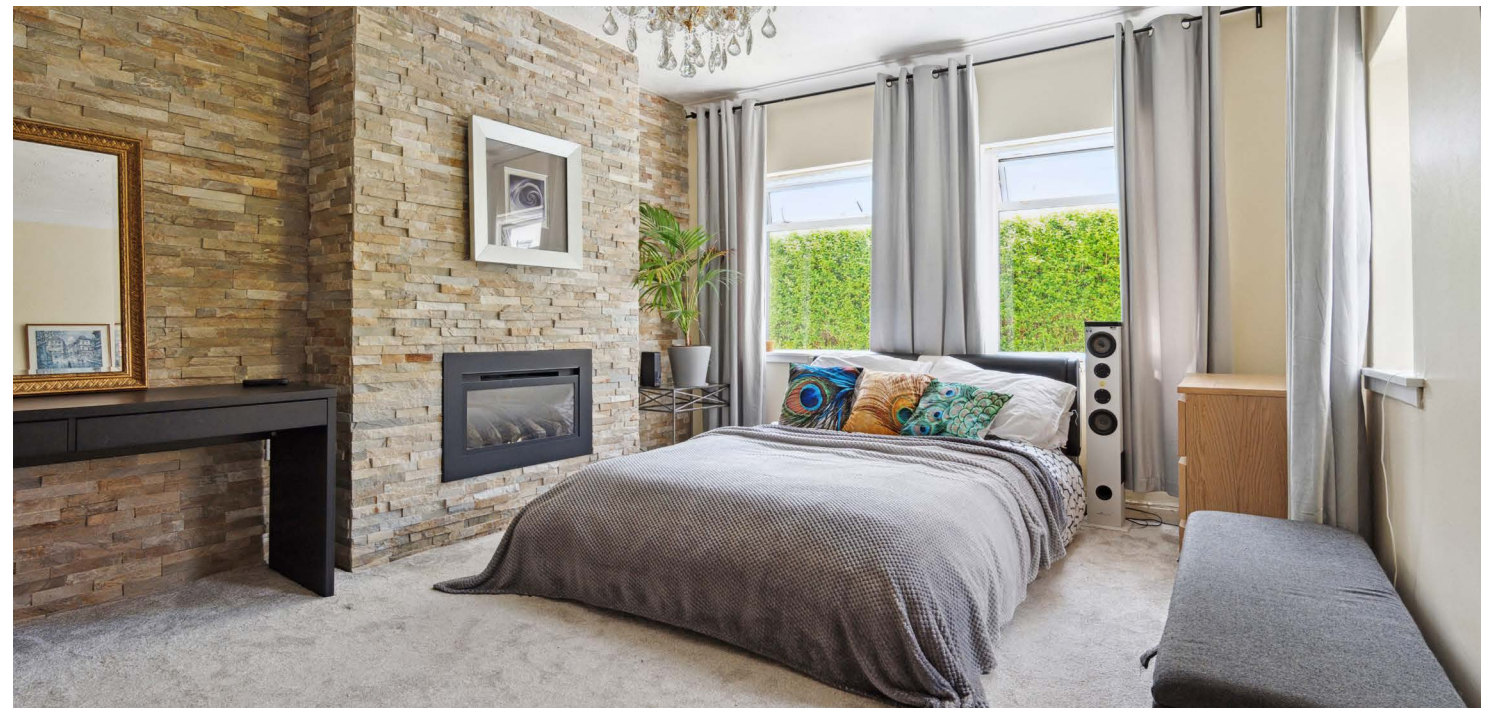
1/2 | PUBLIC ROOMS

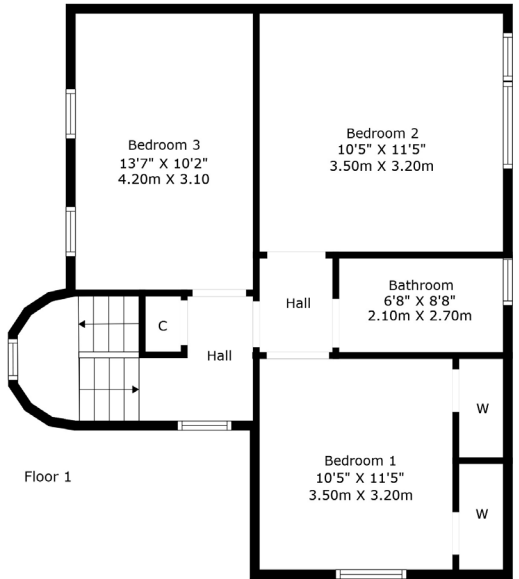
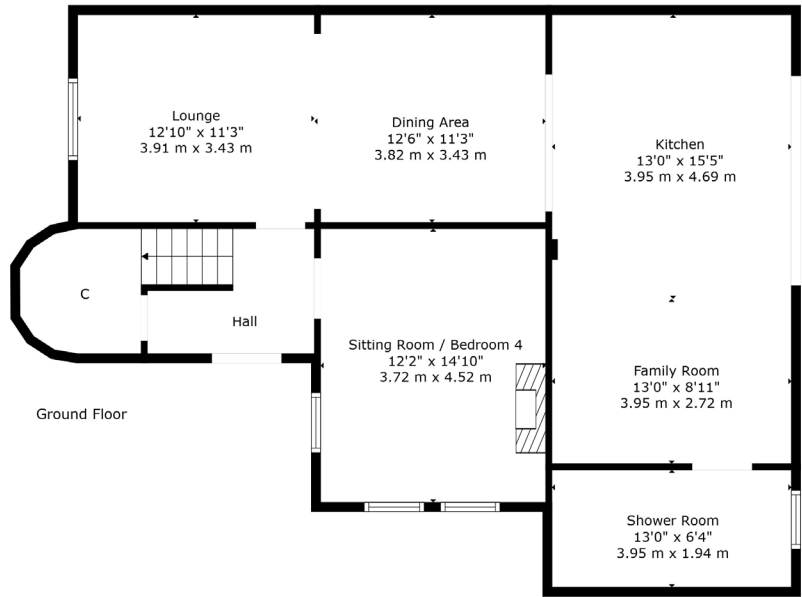
An extended end terraced villa set within level garden grounds.

This traditional end terraced villa enjoys a lovely position within this popular pocket of Newton Mearns. Set within level private gardens, the subjects have been extended, improved and upgraded throughout.

The ground floor accommodation extends to entrance hallway with storage adjacent, modern shower room, a rear extension which provides a front facing living area open plan to dining area with further open plan access through to contemporary fitted kitchen with a range of wall and base mounted units and central island, open to family room with feature TV/media wall, with access via sliding doors to gardens at rear, the ground floor is completed by a dual aspect sitting room/fourth bedroom with feature fireplace to front. Upstairs provides spacious rear facing double bedroom with fitted wardrobes, second good double bedroom, third good bedroom and modern main family bathroom. The specification includes a system of gas central heating, double glazing, and the subjects are well presented and decorated throughout.

Externally the property is set within private, level and easily maintained garden grounds with lawned and decked areas. Driveway to side. External unit providing additional storage.





Measurements Are Calculated By Culum Technology. Deemed Highly Reliable But Not Guaranteed



Newton Mearns is one of the most sought-after suburbs within the south side of Glasgow. The property is superbly placed for a wide range of amenities and indeed nationally recognised schooling. The property is a short distance away from excellent shopping at The Avenue at Mearns Cross and Greenlaw Village. There are an abundance of sports and recreational facilities found within the district which include excellent golf courses, parks, tennis clubs and there are a variety of country pursuits found nearby. Local train stations include Patterton Station and Whitecraigs Station

NM4345 | Sat Nav: 33 Castle Road, Newton Mearns, G77 6DQ

For the full home report visit www.corumproperty.co.uk

* All measurements and distances are approximate Floorplans are for illustration purposes and may not be to scale.



WE'RE **SOLD** ON
YOUR FUTURE



Corum Newton Mearns
134 Ayr Road, Newton Mearns, G77 6EG

Tel: 0141 639 5888

Email: n.mearns@corumproperty.co.uk

www.corumproperty.co.uk