



2 MEY PLACE

NEWTON MEARNS

www.corumproperty.co.uk


c o r u m



3 | BEDROOMS

1 | BATHROOM

1 | PUBLIC ROOM

A modern detached villa set within the highly popular Westacres Development.

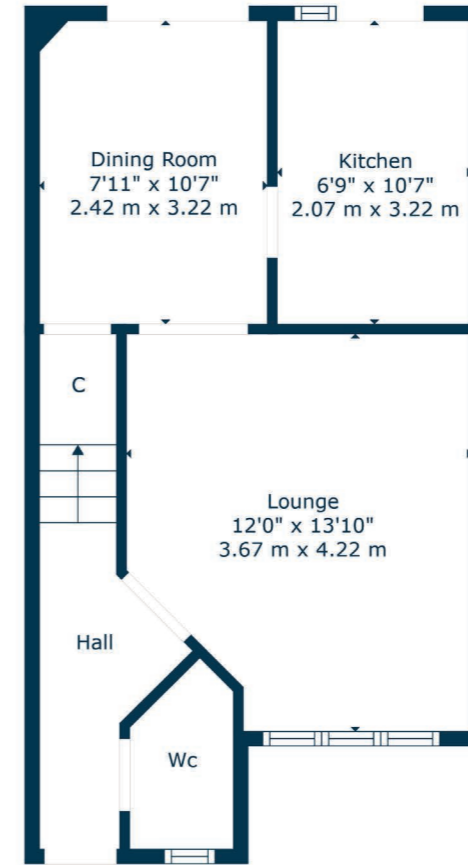
This modern detached villa is set within the highly popular and sought after Westacres Development. Set within a quiet estate with no through traffic, the subjects are presented in lovely condition throughout and would be ideal for a young growing family.

The ground floor accommodation offers entrance hallway with useful downstairs WC/cloaks adjacent, principal lounge with doors leading to formal dining room which gives access to gardens at rear, and through to recently fitted modern kitchen with a range of wall and base mounted units. The upper accommodation provides spacious principal bedroom with fitted wardrobes, second generous double bedroom, third good sized bedroom with fitted storage, and recently upgraded contemporary main family bathroom. Further benefits include recently replaced double glazing and gas central heating with combination boiler.

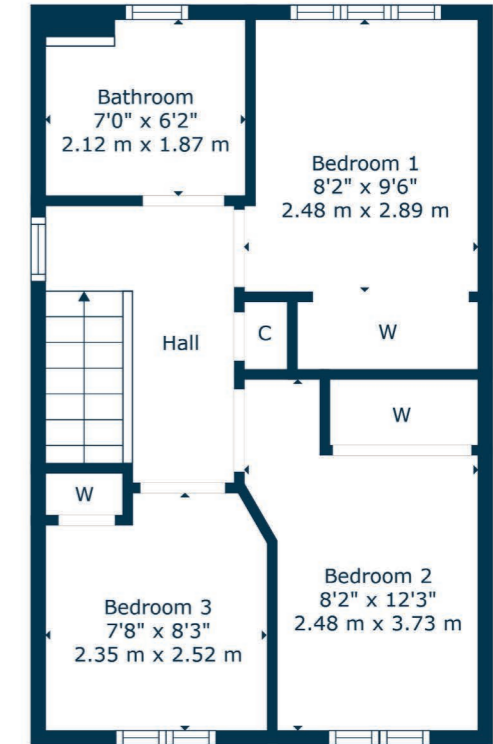
Externally the subjects enjoy easily maintained level garden grounds to the rear with a pleasant mix of soft and hard landscaped areas with a level lawn and patio area. Driveway to the side providing vehicular parking.

This is an excellent and very well balanced home for today's modern family and fully justifies a full internal inspection for any buyer looking to obtain a good quality home in a great Newton Mearns location.





Floor 1



Floor 2

Newton Mearns is one of the most sought-after suburbs within the south side of Glasgow. The property is superbly placed for a wide range of amenities and indeed nationally recognised schooling. The property is a short distance away from excellent shopping at The Avenue at Mearns Cross and Greenlaw Village. There are an abundance of sports and recreational facilities found within the district which include excellent golf courses, parks, tennis clubs and there are a variety of country pursuits found nearby at Hazeldene. Local train stations include Whitecraigs Station and Patterton Station.

NM4313 | Sat Nav: 2 Mey Place, Newton Mearns, G77 6WU

For the full home report visit www.corumproperty.co.uk

* All measurements and distances are approximate Floorplans are for illustration purposes and may not be to scale.



WE'RE **SOLD** ON
YOUR FUTURE



Corum Newton Mearns
134 Ayr Road, Newton Mearns, G77 6EG

Tel: 0141 639 5888

Email: n.mearns@corumproperty.co.uk

www.corumproperty.co.uk