



# RAVENS COURT COTTAGE

THORNTONHALL

[www.corumproperty.co.uk](http://www.corumproperty.co.uk)





2 | BEDROOMS

1 | BATHROOM

1 | PUBLIC ROOM

**Ravenscourt Cottage is a quintessential detached lodge house/cottage enjoying splendid open aspects over the adjacent rolling countryside.**

Ravenscourt Cottage dating to the 1920's is a charming, detached cottage/lodge house that is distinguished by its sandstone exterior, harling roughcast and set under a rosemary tiled roof system. Originally the lodge house to what was Ravenscourt Mansion House, the lodge house has been attached to the Ravenscourt development for many years and is now being sold by the Ravenscourt residents.

An outstanding opportunity that would suit a broad range of buyers, particularly those seeking a charming, detached cottage or indeed purchasers looking to acquire property that would be suitable for refurbishment, upgrading and redesign.

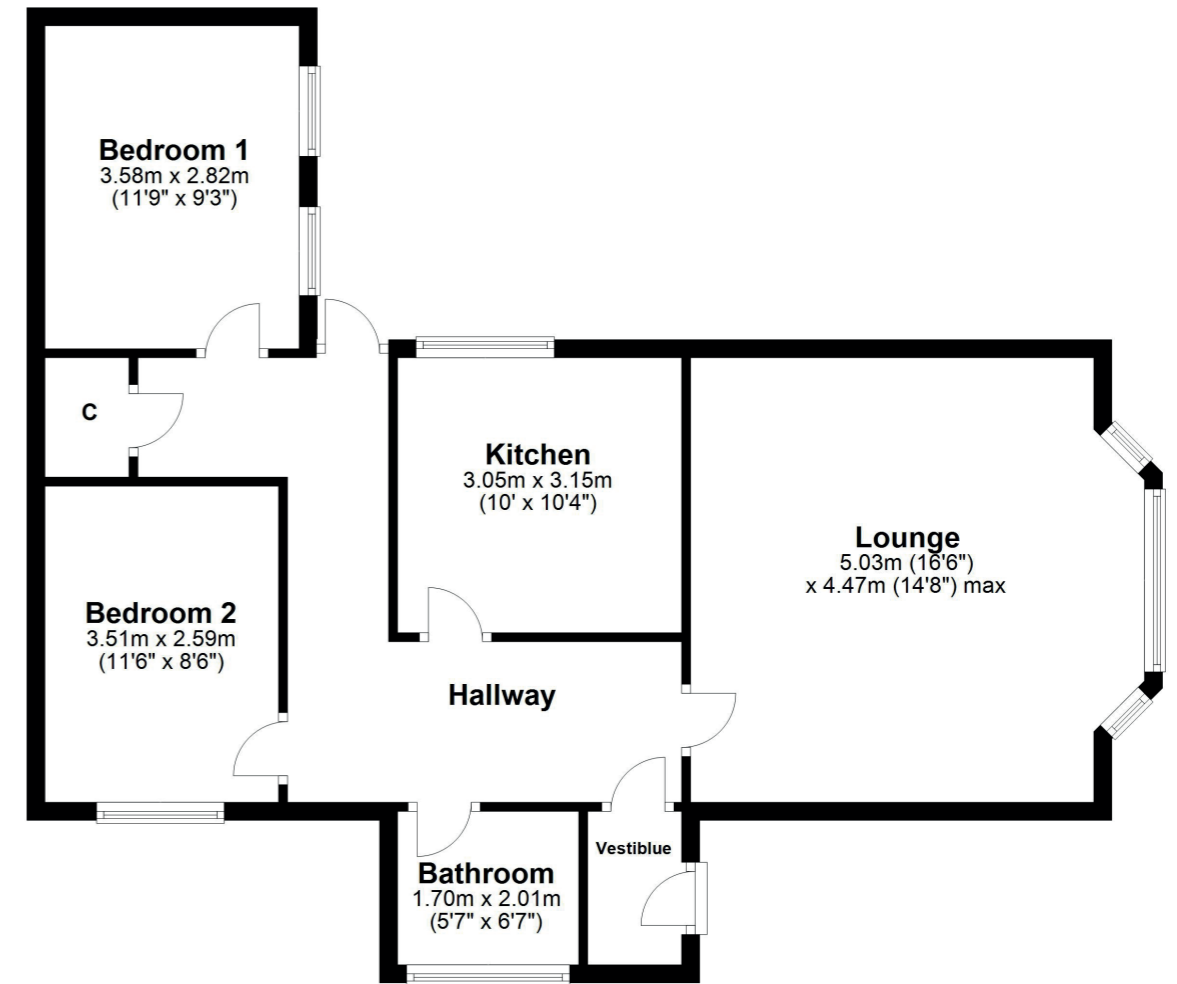
Undoubtedly the setting with its slightly elevated position enjoying aspects over the adjacent countryside, make this an extraordinary opportunity to the marketplace.

Entrance vestibule, traditional style L shaped hallway, dual aspect bay windowed lounge with fireplace, two bedrooms, kitchen and bathroom complete the accommodation. Large attic space.

The house is set within broad fronted, mainly lawned garden grounds with driveway and large storage shed.

The property has a system of gas central heating with an annually maintained Worcester boiler (installed 2016) and traditional style double glazed windows.





Thorntonhall is a quiet leafy village displaying a variety of individual and impressive detached residences and is widely regarded as one of Glasgow's premier addresses. Excellent shopping facilities are available in East Kilbride or the nearby suburbs of Clarkston, Giffnock and Newton Mearns, with a number of major supermarkets including Waitrose and Marks and Spencer along with a wide range of exclusive brand shops in addition to Silverburn Shopping Centre. They also provide a variety of leisure and sporting facilities including tennis, rugby, bowling, equestrian and a selection of well-regarded golf courses. It also has transport links to the city centre and beyond by way of its own train station.

**NM4129** | Sat Nav: Ravenscourt Cottage, Thorntonhall, G74 5AZ

For the full home report visit [www.corumproperty.co.uk](http://www.corumproperty.co.uk)

\* All measurements and distances are approximate Floorplans are for illustration purposes and may not be to scale.



WE'RE **SOLD** ON  
YOUR FUTURE



Corum Newton Mearns  
134 Ayr Road, Newton Mearns, G77 6EG

Tel: 0141 639 5888

Email: [n.mearns@corumproperty.co.uk](mailto:n.mearns@corumproperty.co.uk)

[www.corumproperty.co.uk](http://www.corumproperty.co.uk)