



**1 ETIVE DRIVE**

BISHOPTON

[www.corumproperty.co.uk](http://www.corumproperty.co.uk)

  
c o r u m

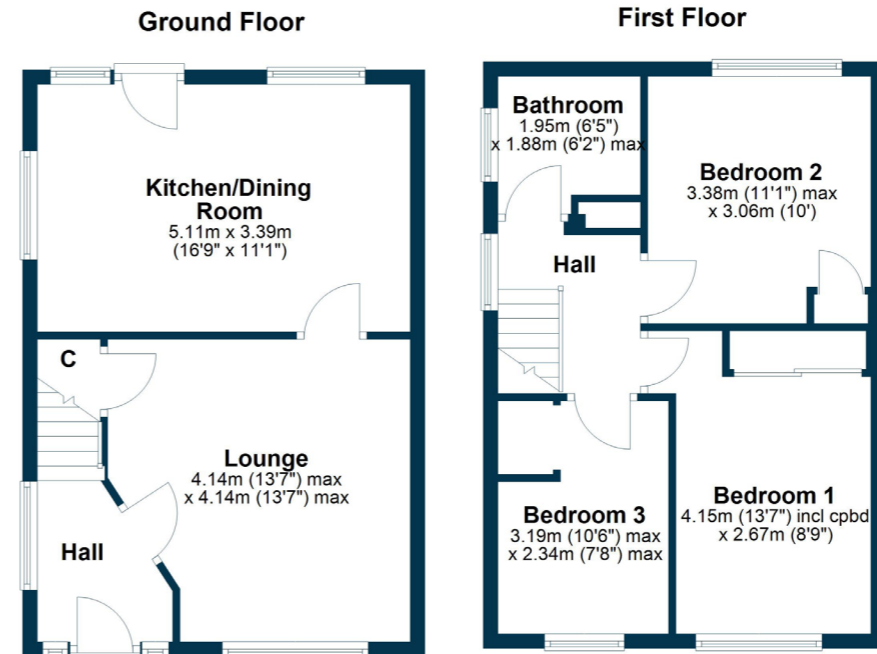
**3 | BEDROOMS**  
**1 | BATHROOM**  
**1 | PUBLIC ROOM**

A stylish three bedroom semi detached villa upgraded to provide an impressive family home in a peaceful cul de sac location.

- Modern semi detached villa.
- Cul-de-sac location
- Landscaped garden with garage and driveway
- Upgraded and remodeled interior
- Lounge, modern fitted dining kitchen.
- Three bedrooms
- Stylish bathroom
- Gas ch, double glazing

**Amenities**

Bishopton is a popular village in West Renfrewshire with ongoing extensive development at Dargavel Village with the modern Dargavel primary school and local shops. The original village contains Bishopton primary school and secondary schooling can be found in nearby Erskine. Bishopton is also well placed for accessing Glasgow International Airport with direct access to the M8 motorway which allows for travel to neighboring towns as well as INTU Retail Park, Glasgow city centre and the A737 Howwood bypass which allows for travel to North Ayrshire. There are several local shops, Bishopton rugby club, and Erskine Golf Club.



**Sat Nav:**  
 1 Etive Drive, Bishopton, PA7 5EQ

**BW2531**

\*All measurements and distances are approximate. Floorplans are for illustration purposes and may not be to scale.

For the full home report visit  
[www.corumproperty.co.uk](http://www.corumproperty.co.uk)



WE'RE **SOLD** ON  
YOUR FUTURE



Corum Bridge of Weir  
2 Windsor Place, Main Street, Bridge Of Weir, PA11 3AF

T: 01505 691 400

E: [bridgeofweir@corumproperty.co.uk](mailto:bridgeofweir@corumproperty.co.uk)

[www.corumproperty.co.uk](http://www.corumproperty.co.uk)