



**22 LOCHERBURN AVENUE**

HOUSTON

[www.corumproperty.co.uk](http://www.corumproperty.co.uk)



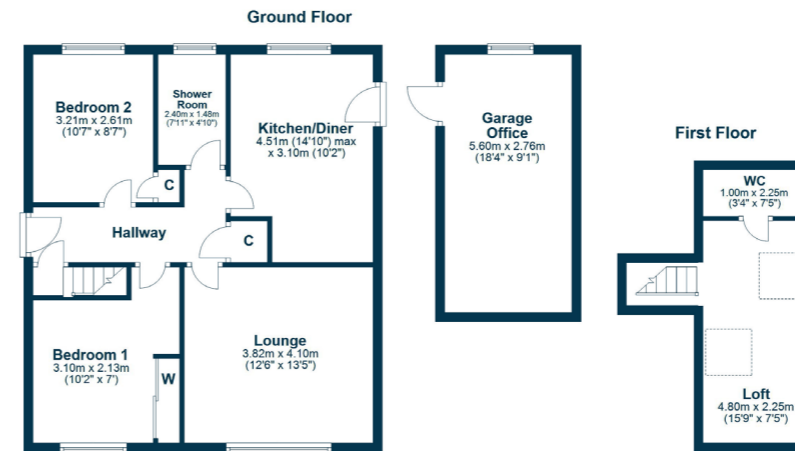
2 | BEDROOMS  
1 | BATHROOM  
1 | PUBLIC ROOM

A prime property for full refurbishment, this charming detached bungalow sits on a substantial plot within a highly regarded Houston address.

- Detached Bungalow
- All on level accommodation
- Double glazing and gas central heating
- Two driveways
- Substantial garden grounds
- Detached garage converted into an office space
- Prime cul-de-sac address
- Semi-rural village with ideal transport links

#### Amenities

The conservation village of Houston is popular with commuters with good road links via the A737 to the M8 motorway network. Johnstone railway station has regular services to Glasgow city centre and the Clyde coast. Houston has excellent local schooling at Nursery, Primary and Secondary levels including the sought after Gryffe High School. There are several golf courses in the local area, equestrian facilities at Ingliston, a bowling club and Strathgryffe Tennis, Squash and Fitness Centre.



Sat Nav:  
AddressHere

LA4999

\*All measurements and distances are approximate. Floorplans are for illustration purposes and may not be to scale.

For the full home report visit  
[www.corumproperty.co.uk](http://www.corumproperty.co.uk)



WE'RE **SOLD** ON  
YOUR FUTURE



Corum Bridge of Weir  
2 Windsor Place, Main Street, Bridge Of Weir, PA11 3AF

T: 01505 691 400

E: [bridgeofweir@corumproperty.co.uk](mailto:bridgeofweir@corumproperty.co.uk)

[www.corumproperty.co.uk](http://www.corumproperty.co.uk)