

DUNDAS

# Dargavel Village

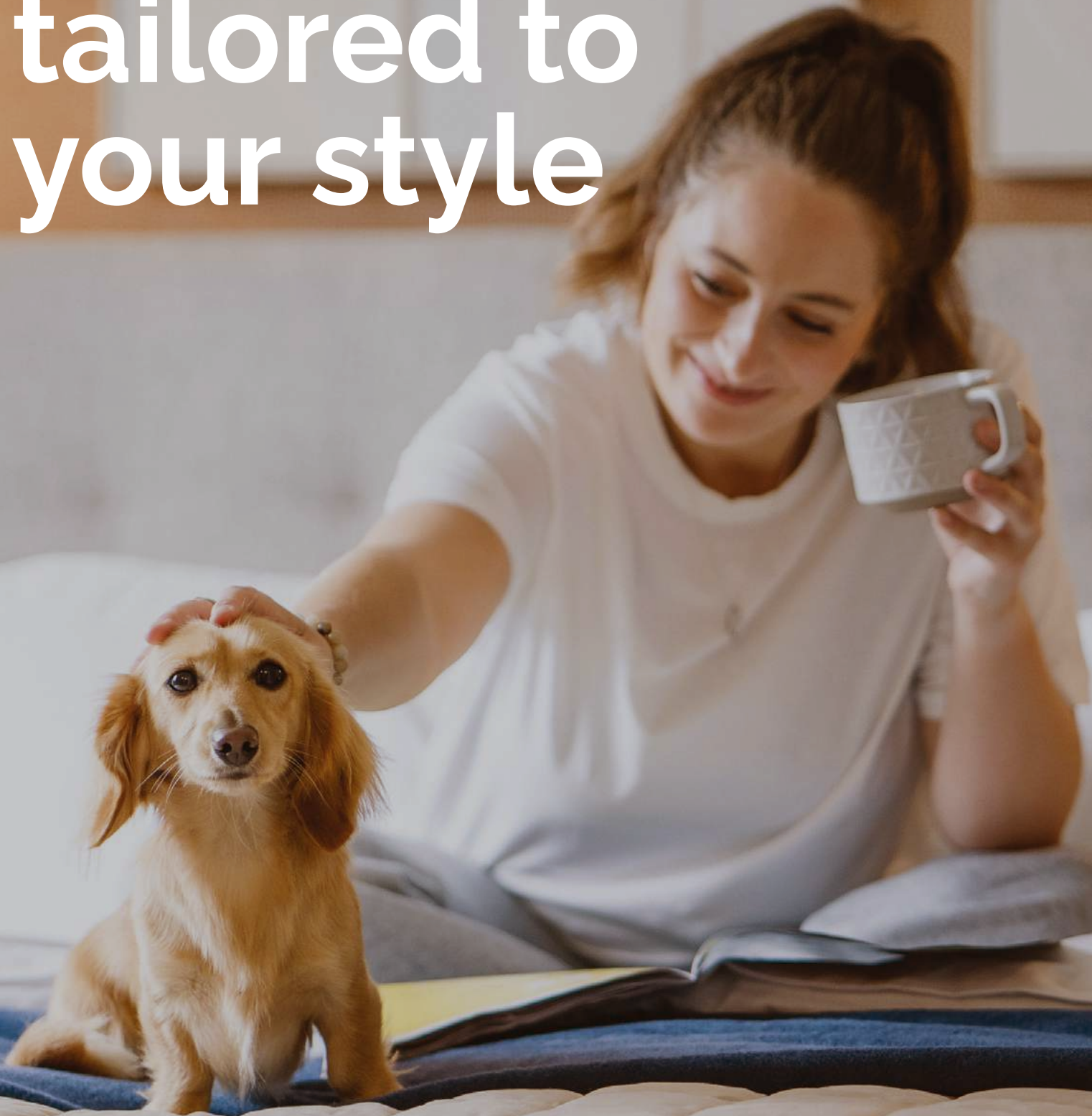
## Bishopton



A special community of 3, 4, 5 and 6 bedroom energy-efficient and high-specification family homes

Discover more at [dundas.co.uk](https://www.dundas.co.uk)

# Fantastic homes tailored to your style



Discover more at [dundas.co.uk](https://www.dundas.co.uk)

## The perfect place for you to call home.

Live in Renfrewshire's most sought-after areas, which blends rural charm with urban convenience - perfect for any commuter. The new Dargavel Village offers highly specified houses, all of which are perfectly positioned to enjoy all of the surrounding benefits - truly an ideal place to call home.



# Bishopton:

## Your new home.

We offer a unique opportunity that provides commuters with easy access to the city centre whilst also allowing the chance to enjoy spacious gardens and nearby green spaces. You will be a short drive from the M8 leading to Glasgow and Greenock - not to mention the closeby 'park and ride' railway station for journeys into the city centre and beyond. Convenient local bus routes offering regular services are also available.

Not only is Bishopton surrounded by the beautiful countryside, the Clyde coastline is within a short drive - both providing relaxing walks and scenic trails. Whether you are a growing family or simply looking for a quieter space outside the city centre - we will have the right home for you.



**28** Minutes to Glasgow City Centre by car



**7** Minute cycle to Erskine Bridge

# Make yourself at home.

Within Dargavel Village you'll find a selection of homes that have all been carefully designed by award-winning architects to ensure each home meets your aspirations.

## At Your Fingertips

Bishopton already boasts a variety of local amenities for all ages including, rugby, tennis, and football clubs, as well as charming pubs and taverns. The area benefits from new, purpose-built facilities including a primary school, community center, library, and leisure center. The Dargavel Village development enhances these amenities with a master-planned community of new homes and infrastructure. This includes new road links from the A8, a new Bishopton junction from the M8, and retail and employment spaces, along with generous open areas for parks and woodland walks.

## Your Backdrop

Located less than 4 miles from Erskine Bridge, Dargavel Village offers convenient access to north Glasgow and routes to Loch Lomond. For leisure and shopping, Intu and XSite Braehead provide an ultimate experience with indoor snow slopes, extreme activities, a laser station, bowling, a multiplex cinema, bars, restaurants, and over 100 stores featuring well-known high street brands.

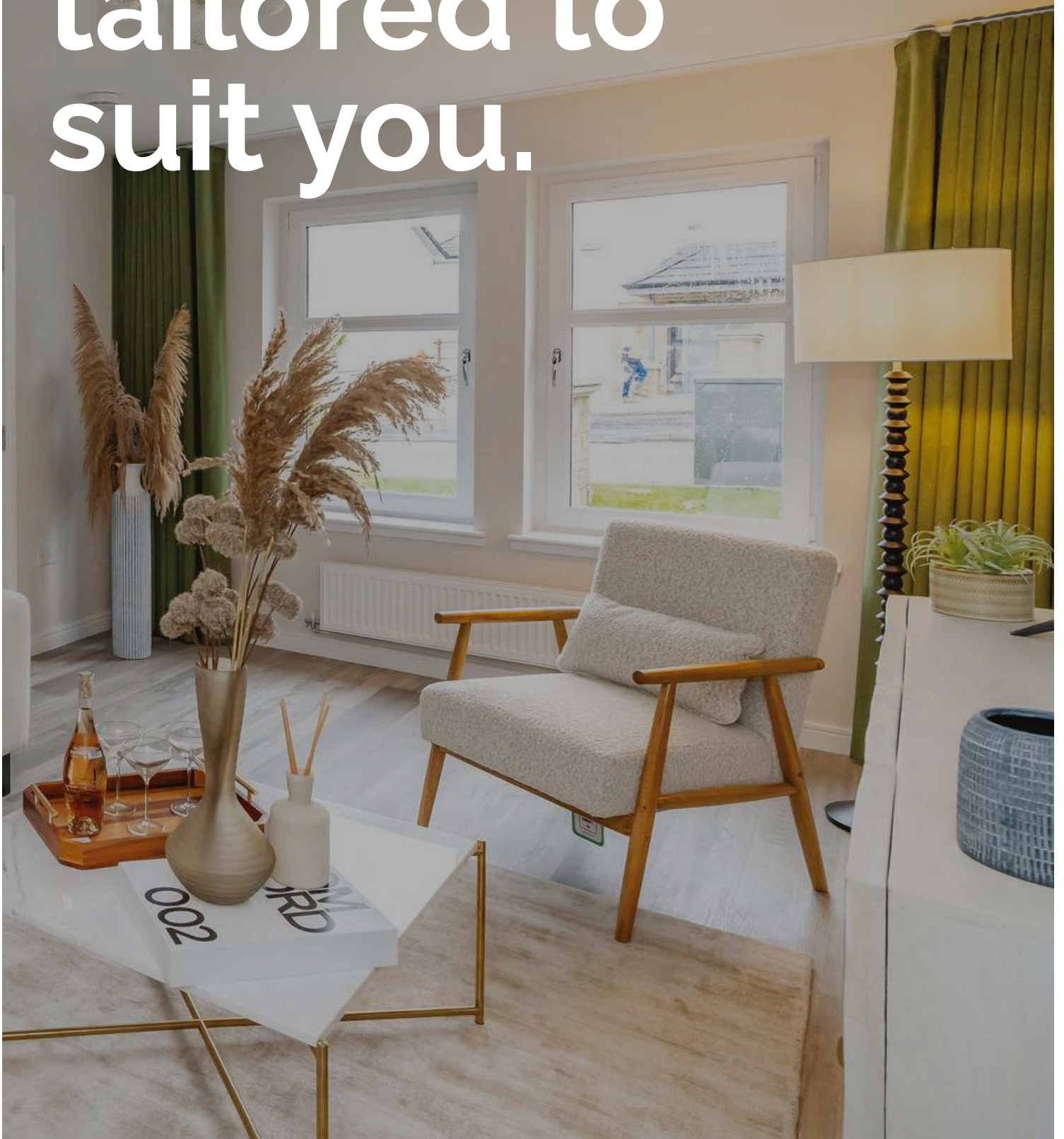


20

House  
Styles



Your home,  
perfectly  
tailored to  
suit you.





At Dargavel Village, we're building a community where you can truly settle in and make your home your own.

**Customisation and Flexibility**

When you reserve your home, and subject to build stage, you have the chance to personalise many features, from kitchen doors and handles to vanity cabinets, worktops, and tiles. We strive to make the process easy, helping you achieve the exact look and feel you desire with one of our team.

**Meticulous Craftsmanship**

Each home is constructed to the highest standards, with a real focus on quality and attention to detail. We use premium materials and adhere to rigorous building standards to ensure your home is safe and secure.

**Efficiency and Sustainability**

Each home is insulated and fitted with solar PV roof panels, along with double-glazed windows. It ensures energy efficiency, making our homes more eco-friendly. All properties have a 10 year NHBC warranty too, so you can buy with confidence, knowing the construction quality has been recognised by an official body.

# Site Plan

## HOUSE TYPES

### 1 BED COACH HOME

AT Aberton

### 3 BED HOMES

BK Berwick

BU Burford

CL Cairnhill

CM Corringham

CU Culross

GF Gainford

### 4 BED HOMES

EL Elland

FH Farnham

HR Harris

HN Hatton

KN Kensworth

### 5 BED HOMES

KD Kendal

LE Leven

LY Lytham

NA Nairn

RO Roslin

ST Stratford

SH Strathearn

### 6 BED HOMES

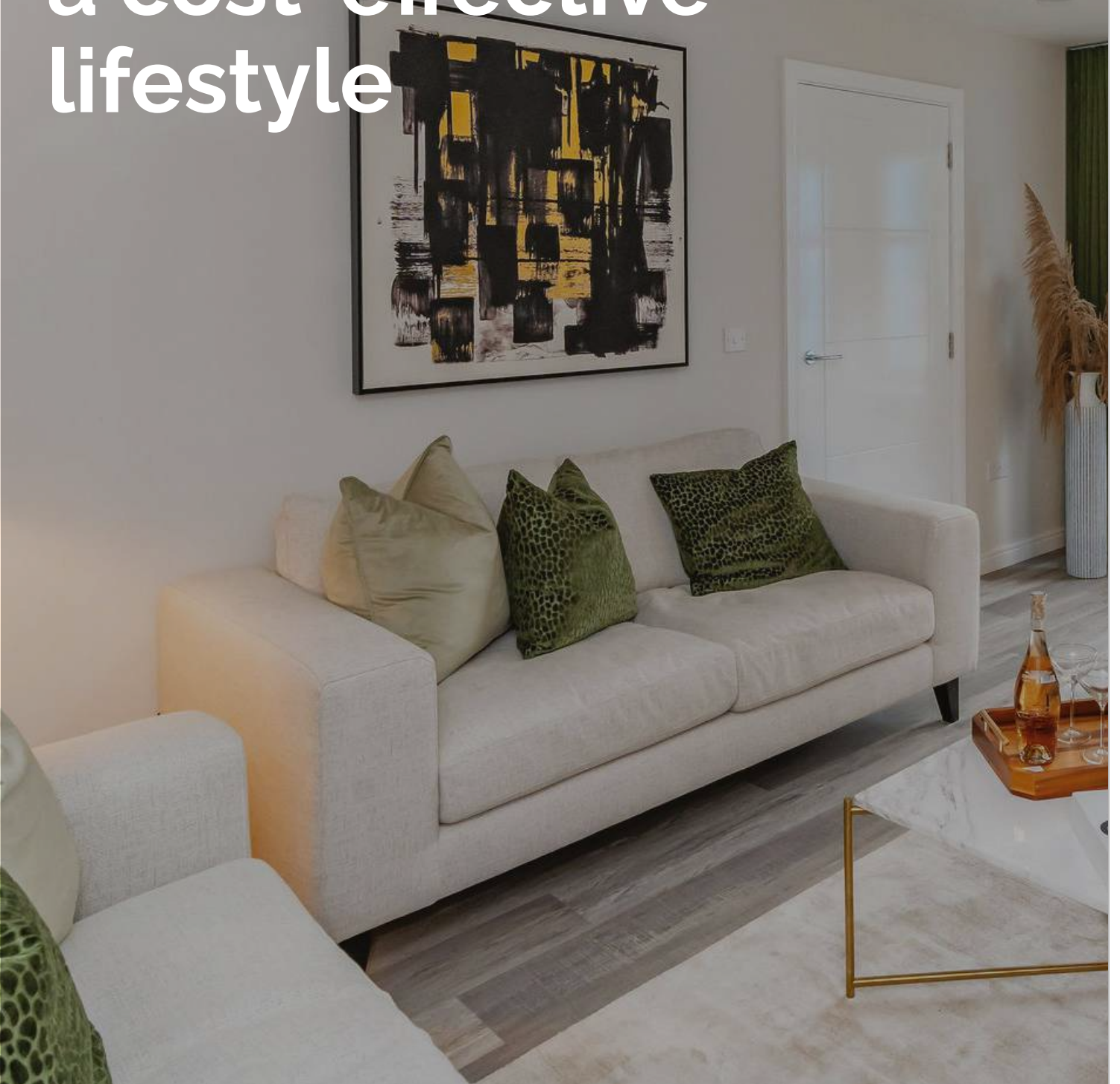
MR Mellor





Computer generated images. Individual features and elevational treatments may vary. Please ask the Sales Negotiator for details of your chosen plot. The site map has been prepared with care and is correct at time of printing, however these details may be subject to change and subsequently do not form part of any contract.

Every home comes equipped with sustainable features that support a cost-effective lifestyle



# Here's a quick overview of the specification at Dargavel Village

	Aberton	Berwick	Berwick (MT)	Berwick (ET)	Burford	Cairnhill	Corringham	Culross	Elland	Farnham	Gainford	Harris	Hatton	Kendal	Kenworth	Leven	Lytham	Mellor	Nairn	Roslin	Stratford	Strathearn	
Gas Combi Condensing Boiler with Thermostatic Radiator Valves to Most Radiators	●	●	●	●	●	●	●			●													
Gas Condensing Boiler With Thermostatic Radiator Valves to Most Radiators								●	●		●	●	●	●	●	●	●	●	●	●	●	●	●
Pressurised Hot Water Cylinder								●	●		●	●	●	●	●	●	●	●	●	●	●	●	●
In Roof Solar PV Panels	●	●	●	●	●	●	●	●	●	●	●	●	●	●	●	●	●	●	●	●	●	●	●
High Performance External Doors	●	●	●	●	●	●	●	●	●	●	●	●	●	●	●	●	●	●	●	●	●	●	●
Upvc Outward Opening French Doors To Rear Garden		●		●	●	●	●	●	●	●	●	●	●	●	●	●	●	●	●	●	●	●	●
Multi-Point Locking To All External Doors	●	●		●	●	●	●	●	●	●	●	●	●	●	●	●	●	●	●	●	●	●	●
Double Glazed UPVC Windows With Child Restrictors*	●	●		●	●	●	●	●	●	●	●	●	●	●	●	●	●	●	●	●	●	●	●
Luxury Fitted Kitchen With Choice Of Worktops And Doors**	●	●	●	●	●	●	●	●	●	●	●	●	●	●	●	●	●	●	●	●	●	●	●
Chrome Under Unit Worktop Lighting To Kitchen	●	●	●	●	●	●	●	●	●	●	●	●	●	●	●	●	●	●	●	●	●	●	●
Extractor Hood Stainless Steel Chimney 60cm	●	●	●	●	●	●	●	●	●	●	●	●	●	●			●						
Extractor Hood Stainless Steel Box Hood 90cm															●	●		●	●	●	●	●	●
Gas Hob - 4 Burner	●	●	●	●	●	●	●	●	●	●	●	●	●	●				●					
Gas Hob - 5 Burner (Black)															●	●		●	●	●	●	●	●
Multifunction Single Oven	●	●	●	●	●	●	●	●	●	●	●	●	●	●	●	●	●	●	●	●	●	●	●
Microwave Oven								●	●	●	●	●	●	●			●						
Combination Microwave Oven															●	●		●	●	●	●	●	●
Fridge/Freezer	●	●	●	●	●	●	●	●	●	●	●	●	●	●	●	●	●	●	●	●	●	●	●
Dishwasher								●	●	●	●	●	●	●	●	●	●	●	●	●	●	●	●
Double Socket with USB Charging Point in the Lounge	●	●	●	●	●	●	●	●	●	●	●	●	●	●	●	●	●	●	●	●	●	●	●
Thermostatic Chrome Bar Mixer Shower in Main Bathroom	●		●					●	●	●	●	●	●	●	●	●	●	●	●	●	●	●	●
Thermostatic Chrome Bar Mixer Shower in En Suite 1		●		●	●	●	●	●	●	●	●	●	●	●	●	●	●	●	●	●	●	●	●
Thermostatic Chrome Bar Mixer Shower in En Suite 2																●	●		●	●	●	●	●
Vanity Unit to Bathroom (with Storage)															●	●		●	●	●	●	●	●
Vanity Unit to En Suite (with Storage)								●	●	●	●	●	●	●	●	●	●	●	●	●	●	●	●
Vitra Sanitaryware Used Throughout	●	●	●	●	●	●	●	●	●	●	●	●	●	●	●	●	●	●	●	●	●	●	●
Sliding Wardrobe Doors to Bedroom 1	●	●	●	●		●	●														●		●
Passdoor Wardrobe Doors to Bedroom 1					W			W	W	W	W	W	●	W	W	W	W	W	W			W	
Passdoor Wardrobe Door to Bedroom 3 & 4																	●						
Energy Efficient Lighting	●	●	●	●	●	●	●	●	●	●	●	●	●	●	●	●	●	●	●	●	●	●	●
TV Point to Lounge, Bedroom 1	●	●	●	●	●	●	●	●	●	●	●	●	●	●	●	●	●	●	●	●	●	●	●
BT Openreach Superfast Broadband, with CAT 5 Cable to Lounge	●	●	●	●	●	●	●	●	●	●	●	●	●	●	●	●	●	●	●	●	●	●	●
White Internal Doors with Chrome Ironmongery	●	●	●	●	●	●	●	●	●	●	●	●	●	●	●	●	●	●	●	●	●	●	●
Walls & Ceilings Painted White	●	●	●	●	●	●	●	●	●	●	●	●	●	●	●	●	●	●	●	●	●	●	●
Smoke, Heat and Carbon Monoxide Alarms	●	●	●	●	●	●	●	●	●	●	●	●	●	●	●	●	●	●	●	●	●	●	●
Underfloor Wall and Roof Space Insulation	●	●	●	●	●	●	●	●	●	●	●	●	●	●	●	●	●	●	●	●	●	●	●
Light and Power to the Garage								●	●	D	●	D	●	D		●				●	●	●	●
Turfed Front Garden		●	●	●	●	●	●	●	●	●	●	●	●	●	●	●	●	●	●	●	●	●	●
Pavior Driveways					●	●	●	●	●	●	●	●	●	●	●	●	●	●	●	●	●	●	●
10 Year NHBC Warranty	●	●	●	●	●	●	●	●	●	●	●	●	●	●	●	●	●	●	●	●	●	●	●

W - Walk-in D - Detached Single

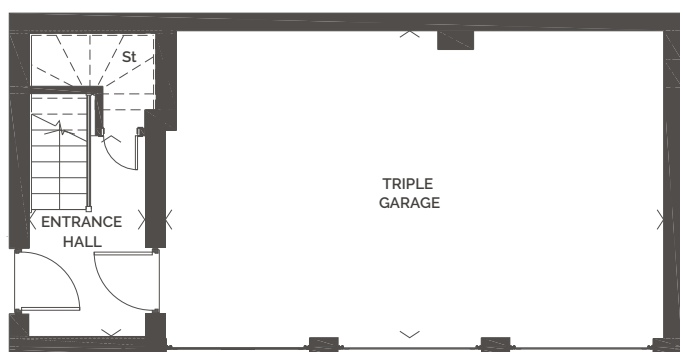
\*Where applicable \*\*Subject to Build Stage



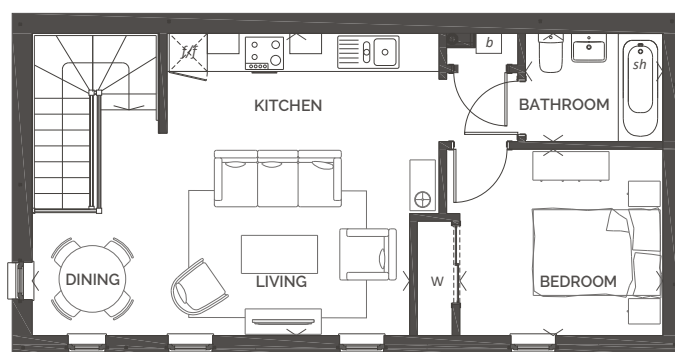
# Aberton

1 bedroom coach home

ROOM	M (WxD)	FT (WxD)
Living/Dining/Kitchen	5.95 x 4.76	19' 6" x 15' 7"
Bedroom 1	3.19 x 2.93	10' 6" x 9' 8"
Bathroom	2.16 x 1.70	7' 1" x 5' 7"
Entrance Hall	1.81 x 3.77	5' 11" x 12' 5"
Triple Garage	7.83 x 4.83	25' 8" x 15' 10"
<b>TOTAL FLOOR AREA</b>	<b>56.13m<sup>2</sup></b>	<b>604ft<sup>2</sup></b>



GROUND FLOOR



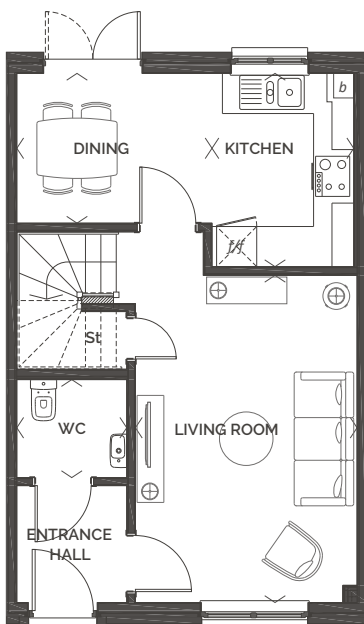
FIRST FLOOR



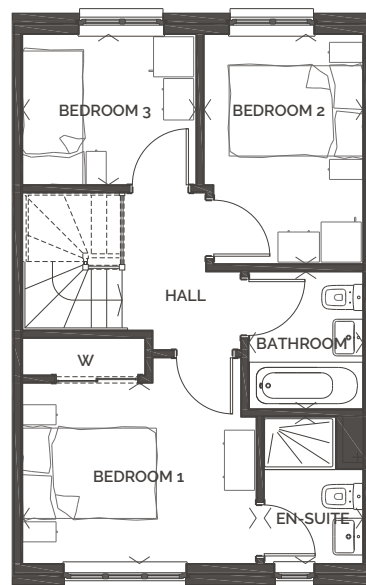
# Berwick

## 3 bedroom mid terrace home

ROOM	M (WxD)	FT (WxD)
Living Room	3.31 x 4.89	10'10" x 16'1"
Kitchen	2.11 x 2.88	6'11" x 9'6"
Dining Area	2.93 x 2.23	9'8" x 7'4"
Bedroom 1	3.51 x 2.699	11'6" x 8'10"
En-Suite 1	1.47 x 2.18	4'10" x 7'2"
Bedroom 2	2.40 x 3.43	7'10" x 11'3"
Bedroom 3	2.58 x 2.24	8'6" x 7'5"
Bathroom	1.70 x 2.05	5'7" x 6'9"
<b>TOTAL FLOOR AREA</b>	<b>80.77m<sup>2</sup></b>	<b>869ft<sup>2</sup></b>



**GROUND FLOOR**



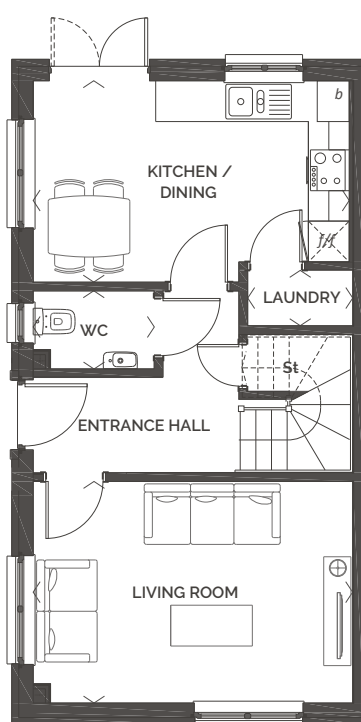
**FIRST FLOOR**



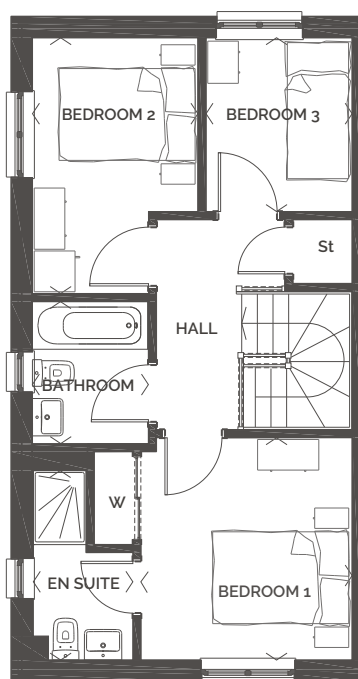
# Burford

## 3 bedroom end terrace home

ROOM	M (WxD)	FT (WxD)
Living Room	4.69 x 3.25	15'5" x 10'8"
Kitchen/Dining	4.64 x 2.96	15'3" x 9'9"
Laundry	1.54 x 0.81	5'1" x 2'8"
Bedroom 1	3.10 x 3.26	10'2" x 10'9"
En-Suite 1	1.46 x 2.78	4'10" x 9'2"
Bedroom 2	2.43 x 3.75	8'0" x 12'4"
Bedroom 3	2.14 x 2.55	7'1" x 8'5"
Bathroom	1.70 x 2.08	5'7" x 6'10"
<b>TOTAL FLOOR AREA</b>	<b>85.96m<sup>2</sup></b>	<b>925ft<sup>2</sup></b>



GROUND FLOOR



FIRST FLOOR

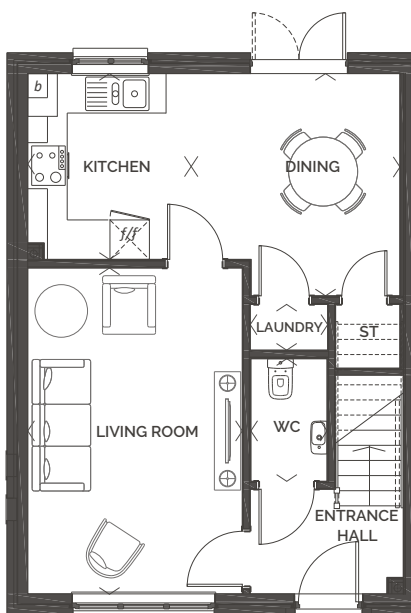




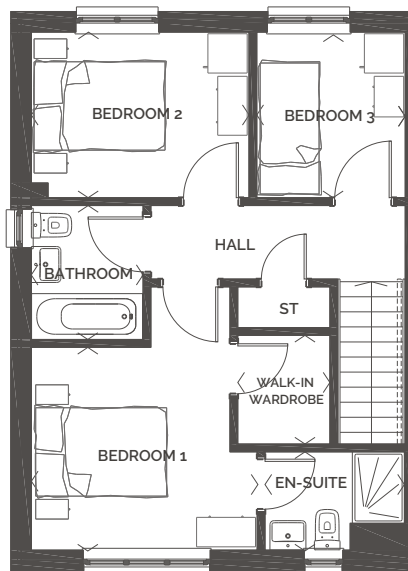
## Cairnhill

3 bedroom end terrace/semi-detached home

ROOM	M (WxD)	FT (WxD)
Living Room	3.26 x 4.95	10'8" x 16'3"
Kitchen	2.48 x 2.82	8'2" x 9'3"
Dining Area	3.17 x 3.37	10'5" x 11'1"
Laundry	1.17 x 0.69	3'10" x 2'3"
Bedroom 1	3.44 x 3.09	11'4" x 10'2"
En-Suite 1	2.12 x 1.50	7'0" x 4'11"
Bedroom 2	3.32 x 2.52	10'11" x 8'4"
Bedroom 3	2.26 x 2.52	7'5" x 8'4"
Bathroom	1.70 x 2.04	5'7" x 6'9"
<b>TOTAL FLOOR AREA</b>	<b>90.34m<sup>2</sup></b>	<b>972ft<sup>2</sup></b>



**GROUND FLOOR**



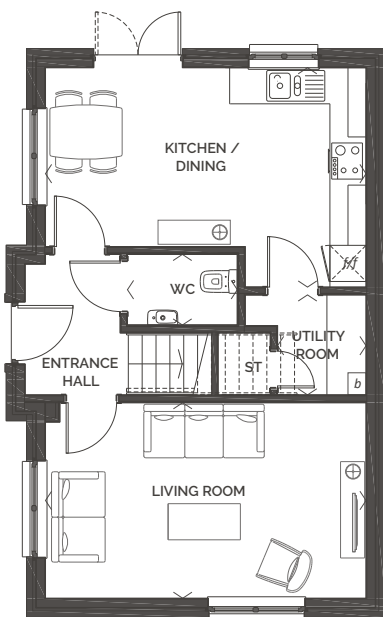
**FIRST FLOOR**



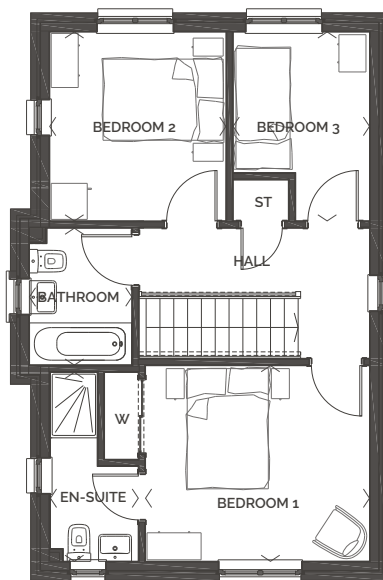
# Corringham

3 bedroom  
detached home

ROOM	M (WxD)	FT (WxD)
Living Room	5.32 x 3.24	17' 6" x 10' 8"
Kitchen/Dining	5.32 x 3.64	17' 6" x 11' 11"
Utility Room	1.51 x 1.66	5' 0" x 5' 5"
Bedroom 1	3.72 x 3.25	12' 3" x 10' 8"
En-Suite 1	1.47 x 3.14	4' 10" x 10' 4"
Bedroom 2	2.93 x 3.14	9' 7" x 10' 4"
Bedroom 3	2.26 x 3.14	7' 5" x 10' 4"
Bathroom	1.70 x 2.28	5' 7" x 7' 6"
<b>TOTAL FLOOR AREA</b>	<b>95.32m<sup>2</sup></b>	<b>1026ft<sup>2</sup></b>



GROUND FLOOR



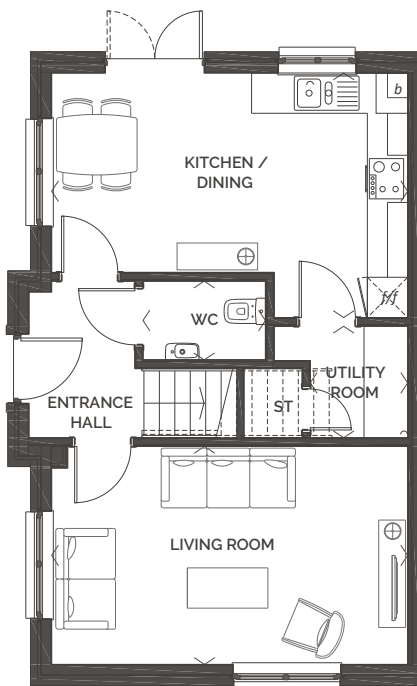
FIRST FLOOR



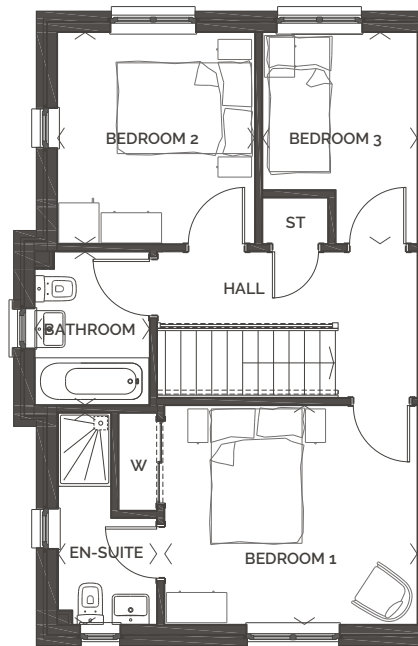
# Culross

3 bedroom  
semi-detached home

ROOM	M (WxD)	FT (WxD)
Living Room	5.30 x 3.24	17'5" x 10'8"
Kitchen/ Dining	5.30 x 2.97	17'5" x 11'11"
Utility Room	1.45 x 1.66	4'9" x 5'5"
Bedroom 1	3.75 x 3.25	12'4" x 10'8"
En-Suite 1	1.47 x 3.14	4'10" x 10'4"
Bedroom 2	2.93 x 3.14	9'4" x 10'4"
Bedroom 3	2.30 x 3.14	7'7" x 10'4"
Bathroom	1.70 x 2.28	5'7" x 7'6"
<b>TOTAL FLOOR AREA</b>	<b>95.78m<sup>2</sup></b>	<b>1031ft<sup>2</sup></b>



**GROUND FLOOR**



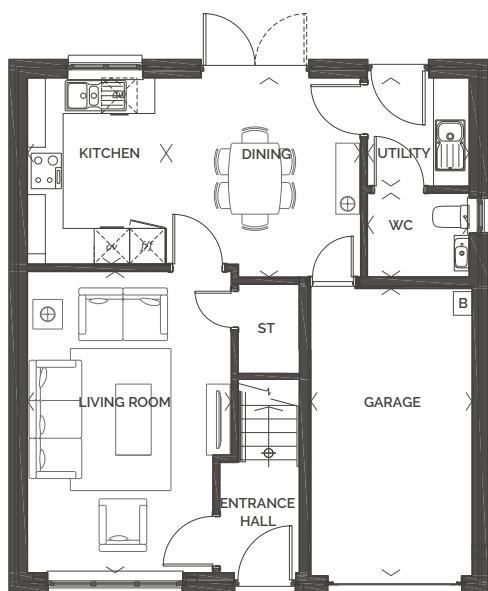
**FIRST FLOOR**



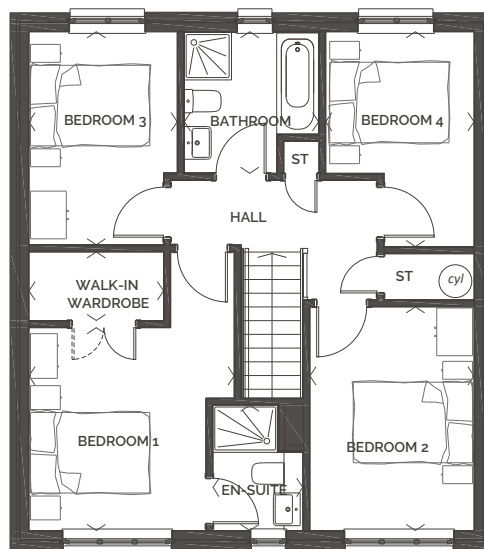
# Elland

4 bedroom  
detached home  
with single garage

ROOM	M (WxD)	FT (WxD)
Living Room	3.43 x 5.08	11'3" x 16'8"
Kitchen	2.34 x 3.14	7'8" x 10'4"
Dining Area	3.28 x 3.36	10'9" x 11'0"
Utility	1.71 x 1.82	5'8" x 6'0"
Bedroom 1	3.43 x 3.40	11'3" x 11'2"
En-Suite 1	1.50 x 2.10	4'11" x 6'11"
Bedroom 2	2.48 x 4.19	8'2" x 13'9"
Bedroom 3	2.48 x 3.57	8'2" x 11'9"
Bedroom 4	2.75 x 3.15	9'0" x 10'4"
Bathroom	2.25 x 2.36	7'5" x 7'9"
<b>TOTAL FLOOR AREA</b>	<b>110.37m<sup>2</sup></b>	<b>1188ft<sup>2</sup></b>



GROUND FLOOR



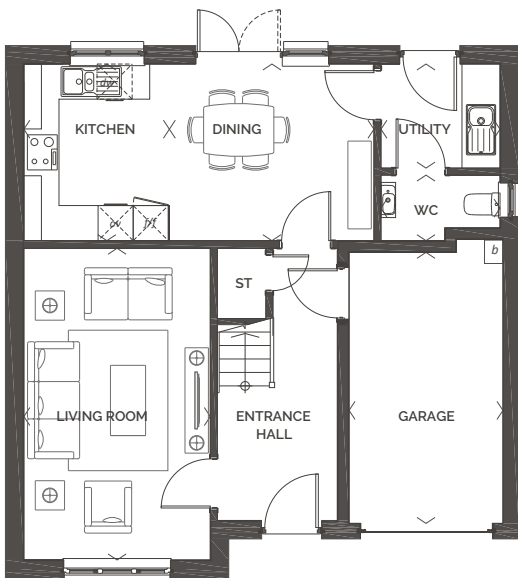
FIRST FLOOR



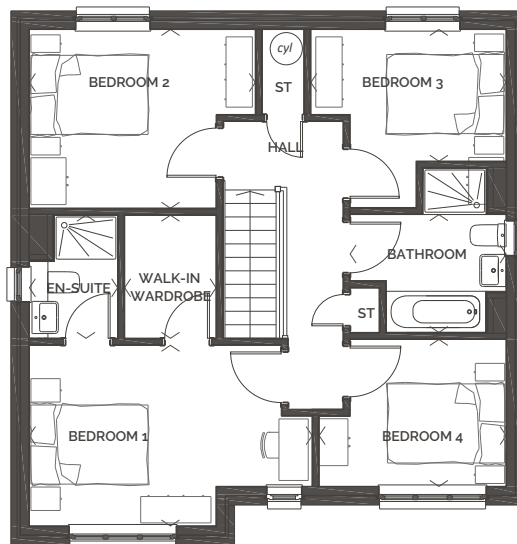
## Farnham

4 bedroom  
detached home  
with single garage

ROOM	M (WxD)	FT (WxD)
Living Room	3.18 x 5.32	10' 5" x 17' 6"
Kitchen	2.34 x 3.01	7' 8" x 9' 11"
Dining Area	3.63 x 3.01	11' 11" x 9' 11"
Utility Room	2.03 x 1.77	6' 8" x 5' 10"
Bedroom 1	3.77 x 3.08	12' 5" x 10' 2"
En-Suite 1	1.50 x 2.10	4' 11" x 6' 11"
Bedroom 2	3.64 x 3.05	12' 0" x 10' 0"
Bedroom 3	4.37 x 3.03	14' 4" x 10' 0"
Bedroom 4	3.33 x 2.50	10' 11" x 8' 3"
Bathroom	2.66 x 2.01	8' 9" x 6' 7"
<b>TOTAL FLOOR AREA</b>	<b>117.67m<sup>2</sup></b>	<b>1266ft<sup>2</sup></b>



**GROUND FLOOR**



**FIRST FLOOR**

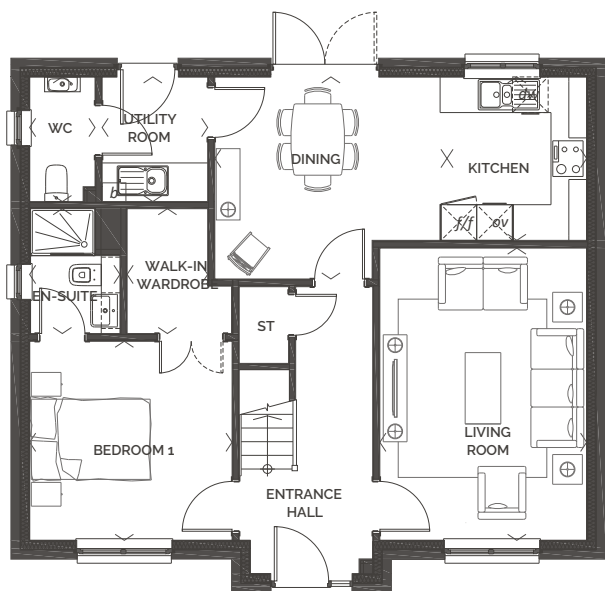


## Gainford

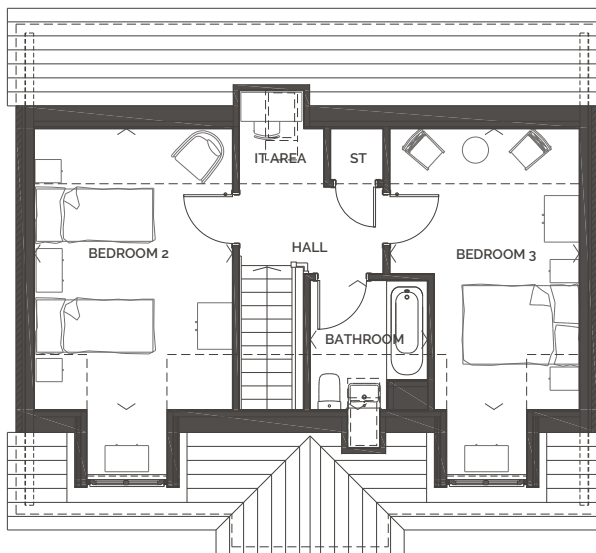
3 bedroom detached home with detached single garage

ROOM	M (WxD)	FT (WxD)
Living Room	3.48 x 4.91	11' 5" x 16' 2"
Kitchen	2.35 x 2.75	7' 9" x 9' 0"
Dining Area	3.90 x 3.40	12' 10" x 11' 2"
Utility Room	1.77 x 2.09	5' 10" x 6' 11"
Bedroom 1	3.40 x 3.35	11' 2" x 11' 0"
En-Suite 1	1.50 x 2.10	4' 11" x 6' 11"
Bedroom 2*	3.40 x 4.82	11' 2" x 15' 10"
Bedroom 3*	3.25 x 4.82	10' 8" x 15' 10"
Bathroom	2.01 x 2.04	6' 7" x 6' 9"
<b>TOTAL FLOOR AREA</b>	<b>122.26m<sup>2</sup></b>	<b>1316ft<sup>2</sup></b>

\*Maximum dimension taken to wall which is 1400mm coomb height.



GROUND FLOOR



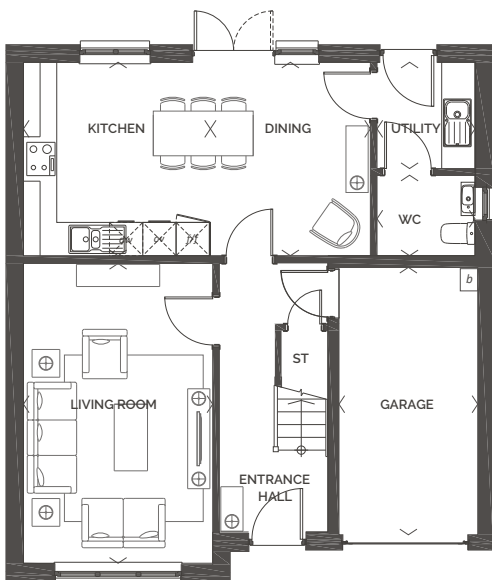
FIRST FLOOR



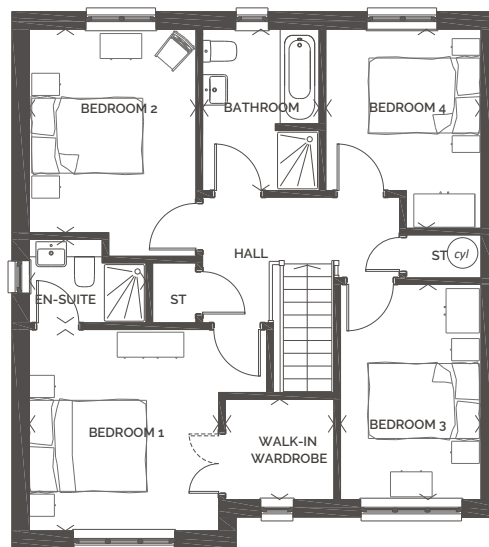
# Harris

4 bedroom  
detached home  
with single garage

ROOM	M (WxD)	FT (WxD)
Living Room	3.41 x 5.40	11' 2" x 17' 9"
Kitchen	3.36 x 3.48	11' 1" x 11' 5"
Dining/Family Area	2.88 x 3.48	9' 5" x 11' 5"
Utility	1.76 x 1.91	6' 3" x 5' 9"
Bedroom 1	3.41 x 3.62	11' 2" x 11' 11"
En-Suite 1	2.10 x 1.50	6' 11" x 4' 11"
Bedroom 2	3.00 x 3.66	9' 10" x 12' 0"
Bedroom 3	2.53 x 3.87	8' 4" x 12' 9"
Bedroom 4	2.79 x 3.58	9' 2" x 11' 9"
Bathroom	2.10 x 2.90	6' 11" x 9' 6"
<b>TOTAL FLOOR AREA</b>	<b>128.47m<sup>2</sup></b>	<b>1382ft<sup>2</sup></b>



**GROUND FLOOR**



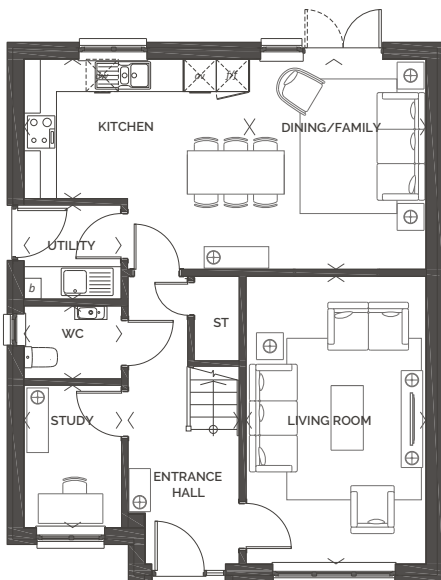
**FIRST FLOOR**



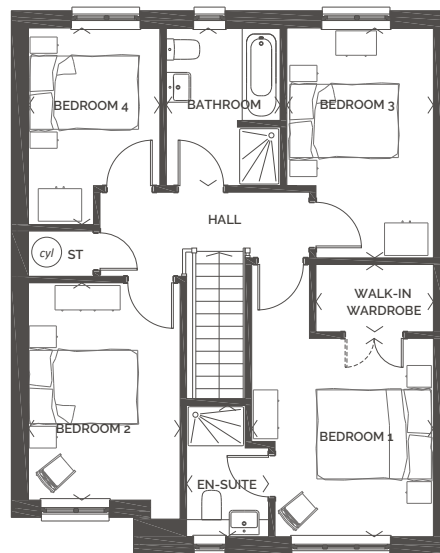
## Hatton

4 bedroom detached home with detached single garage

ROOM	M (WxD)	FT (WxD)
Living Room	3.33 x 5.34	10'11" x 17'6"
Kitchen	4.04 x 2.58	13'3" x 8'6"
Dining/Family Area	3.41 x 3.90	11'3" x 12'10"
Utility	1.80 x 1.74	5'11" x 5'9"
Study	1.81 x 2.64	5'11" x 8'8"
Bedroom 1	3.34 x 3.65	11'0" x 12'0"
En-Suite 1	1.51 x 2.42	4'11" x 7'11"
Bedroom 2	2.79 x 4.00	9'2" x 13'2"
Bedroom 3	2.70 x 4.23	8'10" x 13'11"
Bedroom 4	2.42 x 3.62	7'11" x 11'11"
Bathroom	2.10 x 2.90	6'11" x 9'6"
<b>TOTAL FLOOR AREA</b>	<b>136.8m<sup>2</sup></b>	<b>1427ft<sup>2</sup></b>



GROUND FLOOR



FIRST FLOOR

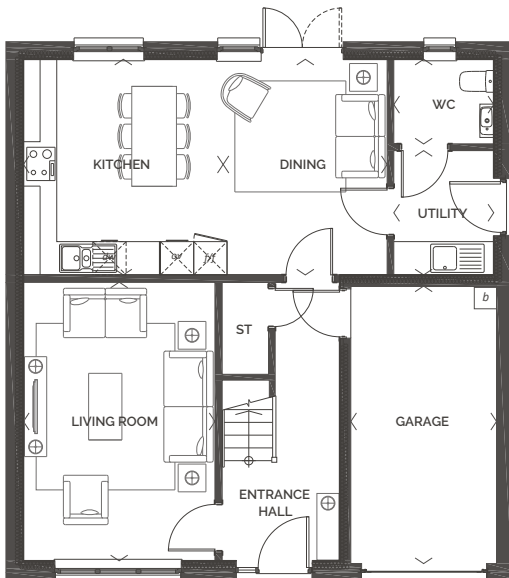




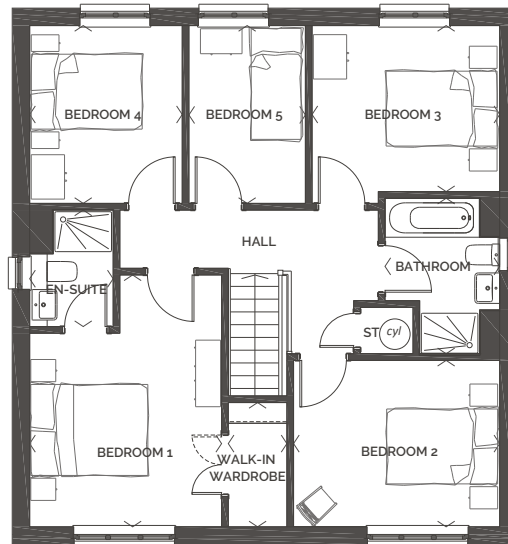
# Kendal

5 bedroom detached home with single garage

ROOM	M (WxD)	FT (WxD)
Living Room	3.45 x 5.02	11'4" x 16'6"
Dining Room/ Family Area	2.95 x 3.88	9'8" x 12'9"
Kitchen	3.59 x 3.88	11'10" x 12'9"
Utility	1.80 x 2.24	5'11" x 7'4"
Bedroom 1	3.46 x 4.54	11'4" x 14'11"
En-Suite 1	1.50 x 2.10	4'11" x 6'11"
Bedroom 2	3.71 x 3.00	12'2" x 9'10"
Bedroom 3	3.38 x 2.99	11'1" x 9'10"
Bedroom 4	2.75 x 3.20	9'0" x 10'6"
Bedroom 5	2.10 x 3.20	6'11" x 10'6"
Bathroom	2.06 x 2.80	6'9" x 9'2"
<b>TOTAL FLOOR AREA</b>	<b>138.79m<sup>2</sup></b>	<b>1493ft<sup>2</sup></b>



**GROUND FLOOR**



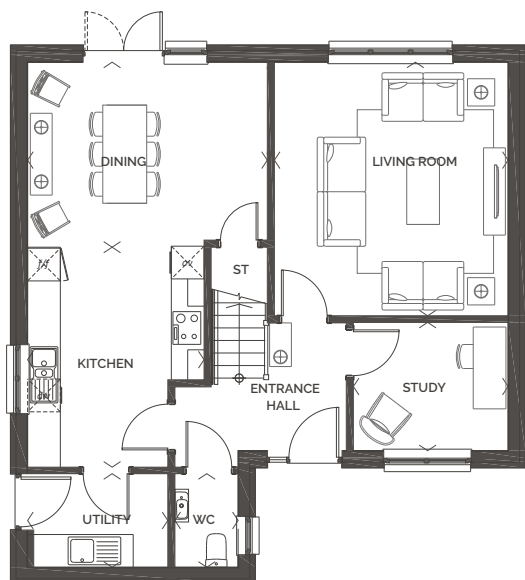
**FIRST FLOOR**



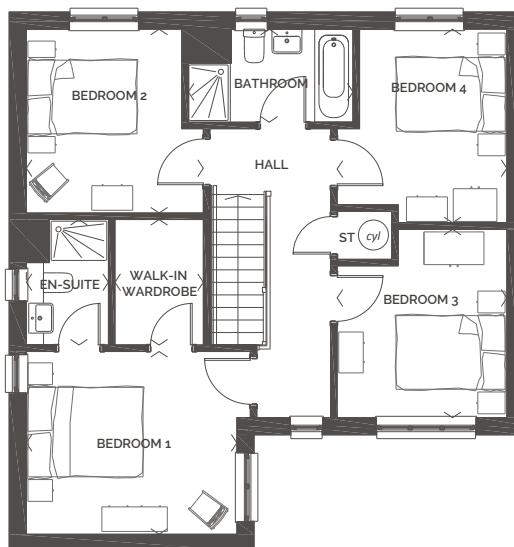
## Kensworth

4 bedroom detached home with detached single garage

ROOM	M (WxD)	FT (WxD)
Living Room	4.28 x 4.65	14' 1" x 15' 3"
Kitchen	3.23 x 4.03	10' 7" x 13' 3"
Family/Dining Area	4.39 x 3.39	14' 5" x 11' 2"
Study	3.18 x 2.46	10' 5" x 8' 1"
Utility	2.57 x 1.71	8' 5" x 5' 8"
Bedroom 1	3.86 x 3.35	12' 8" x 11' 0"
En-Suite 1	1.50 x 2.30	4' 11" x 7' 7"
Bedroom 2	2.60 x 4.88	10' 8" x 11' 1"
Bedroom 3	3.11 x 3.45	10' 2" x 11' 4"
Bedroom 4	3.11 x 3.54	10' 2" x 11' 8"
Bathroom	3.02 x 1.70	9' 11" x 5' 7"
<b>TOTAL FLOOR AREA</b>	<b>141.98m<sup>2</sup></b>	<b>1528ft<sup>2</sup></b>



GROUND FLOOR



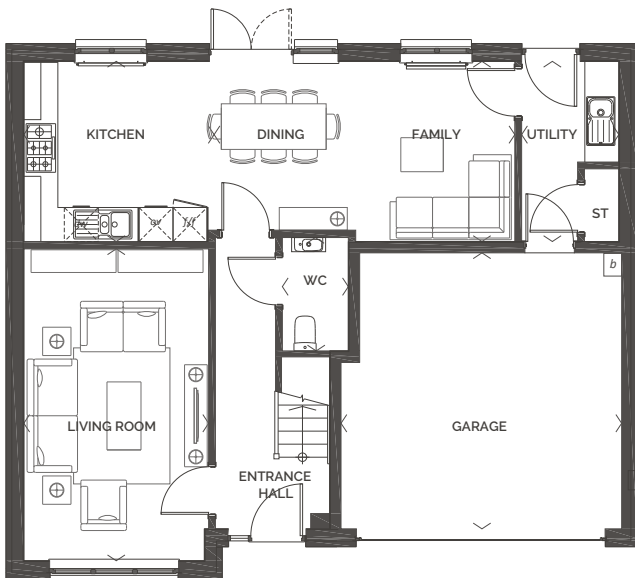
FIRST FLOOR



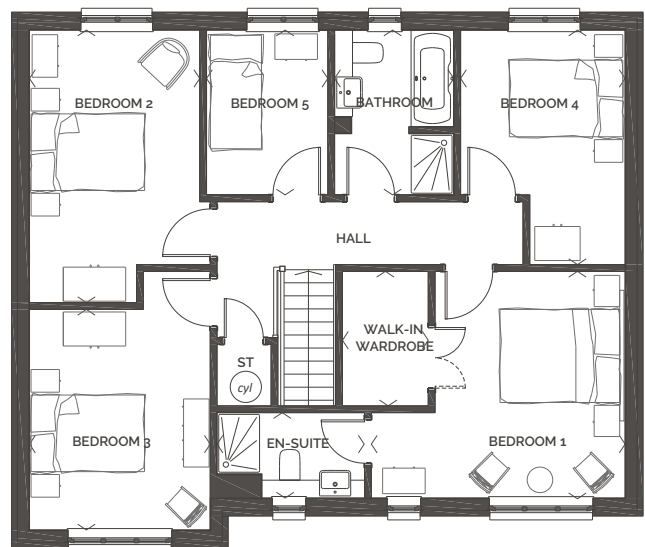
# Leven

5 bedroom detached home with double garage

ROOM	M (WxD)	FT (WxD)
Living Room	3.26 x 5.50	10'8" x 18'1"
Kitchen	3.23 x 3.17	10'7" x 10'5"
Family/Dining Area	5.42 x 3.17	17'10" x 10'5"
Utility	1.71 x 3.17	5'8" x 10'5"
Bedroom 1	4.47 x 3.99	14'8" x 13'1"
En-Suite 1	2.60 x 1.50	8'6" x 4'11"
Bedroom 2	3.00 x 4.80	9'10" x 15'9"
Bedroom 3	3.18 x 3.88	10'5" x 12'9"
Bedroom 4	2.90 x 4.13	9'6" x 13'7"
Bedroom 5	2.13 x 2.90	7'0" x 9'6"
Bathroom	2.10 x 2.90	6'11" x 9'6"
<b>TOTAL FLOOR AREA</b>	<b>151.51m<sup>2</sup></b>	<b>1630ft<sup>2</sup></b>



**GROUND FLOOR**



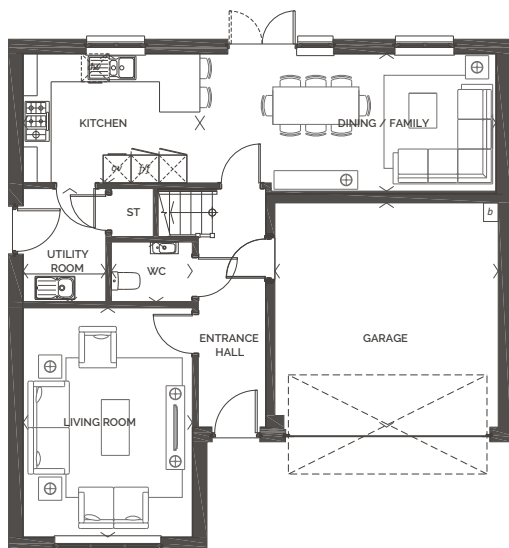
**FIRST FLOOR**



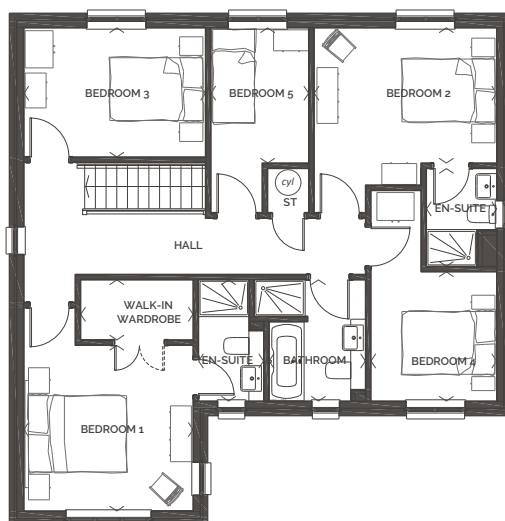
## Lytham

5 bedroom  
detached home with  
double garage

ROOM	M (WxD)	FT (WxD)
Living Room	3.63 x 4.92	11' 11" x 16' 2"
Kitchen	3.75 x 2.77	12' 4" x 9' 1"
Family/Dining Area	6.41 x 2.95	21' 0" x 9' 8"
Utility	1.77 x 2.43	5' 10" x 8' 0"
Bedroom 1	3.63 x 3.55	11' 11" x 11' 8"
En-Suite 1	1.39 x 2.60	4' 7" x 8' 7"
Bedroom 2	3.92 x 2.90	12' 10" x 9' 6"
En-Suite 2	1.50 x 2.10	4' 11" x 6' 11"
Bedroom 3	3.90 x 2.77	12' 10" x 9' 1"
Bedroom 4	2.70 x 2.77	8' 10" x 9' 1"
Bedroom 5	2.10 x 2.90	6' 11" x 9' 6"
Bathroom	2.07 x 2.60	6' 9" x 8' 7"
<b>TOTAL FLOOR AREA</b>	<b>155m<sup>2</sup></b>	<b>1668ft<sup>2</sup></b>



GROUND FLOOR



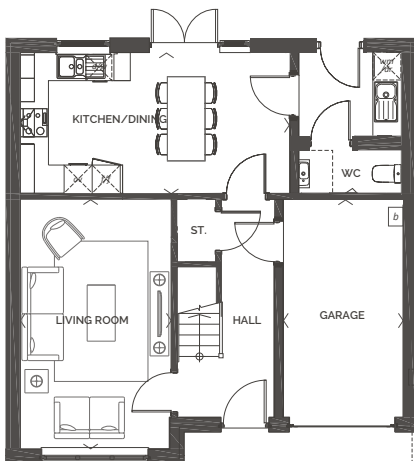
FIRST FLOOR



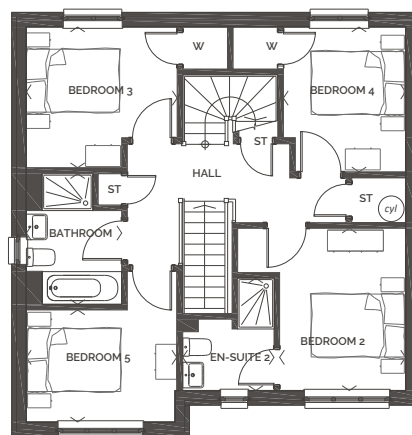
# Mellor

6 bedroom detached home with single garage

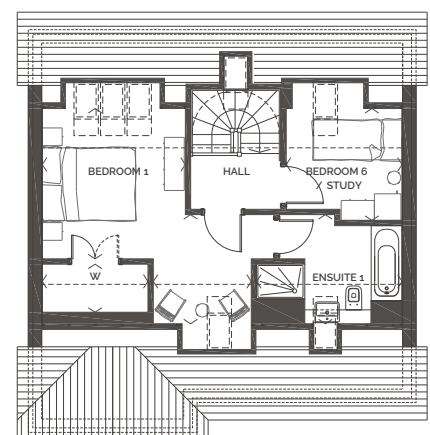
ROOM	M (WxD)	FT (WxD)
Living Room	3.27 x 5.32	10'9" x 17'6"
Kitchen	2.34 x 3.01	7'8" x 9'11"
Family/Dining Area	3.63 x 3.01	11'11" x 9'11"
Utility	2.03 x 1.77	6'8" x 5'10"
Bedroom 2	2.70 x 3.48	8'10" x 11'5"
En-Suite 2	1.91 x 2.40	6'3" x 7'11"
Bedroom 3	3.28 x 3.01	10'9" x 9'11"
Bedroom 4	2.57 x 3.06	8'5" x 10'1"
Bedroom 5	3.27 x 2.40	10'9" x 7'11"
Bathroom	2.04 x 2.80	6'9" x 9'2"
Bedroom 1	3.28 x 3.40	10'9" x 11'2"
En-suite 1	3.29 x 2.46	10'10" x 8'1"
Bedroom 6/Study	2.57 x 2.53	8'5" x 8'4"
<b>TOTAL FLOOR AREA</b>	<b>158.05m<sup>2</sup></b>	<b>1701ft<sup>2</sup></b>



**GROUND FLOOR**



**FIRST FLOOR**



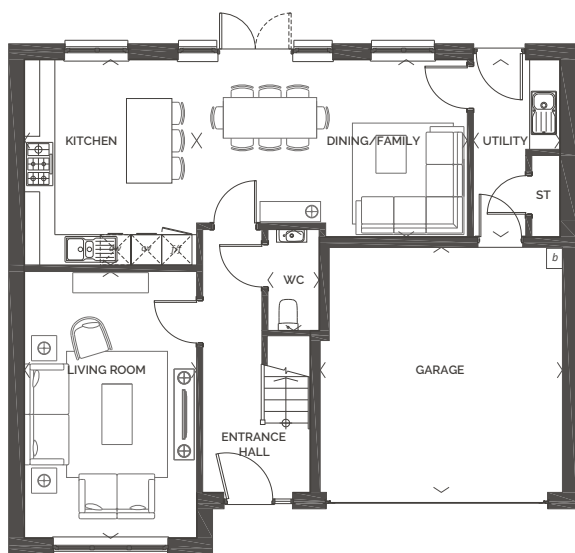
**SECOND FLOOR**



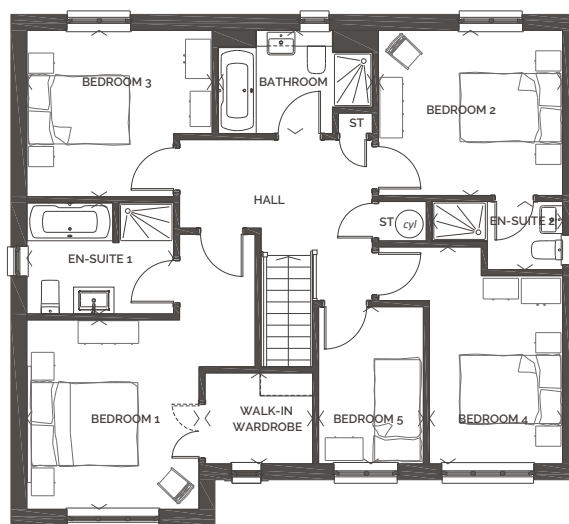
## Nairn

5 bedroom  
detached home with  
double garage

ROOM	M (WxD)	FT (WxD)
Living Room	3.41 x 5.28	11'2" x 17'4"
Kitchen	3.41 x 4.06	11'2" x 13'4"
Dining/Family Area	5.36 x 3.50	17'7" x 11'6"
Utility	1.71 x 3.50	5'8" x 11'6"
Bedroom 1	3.41 x 3.75	11'2" x 12'4"
En-Suite 1	2.90 x 2.20	9'6" x 7'3"
Bedroom 2	3.64 x 3.27	12'0" x 10'9"
En-suite 2	2.58 x 1.35	8'6" x 4'5"
Bedroom 3	3.67 x 3.29	12'0" x 10'10"
Bedroom 4	2.63 x 4.29	8'8" x 14'1"
Bedroom 5	2.07 x 3.11	6'10" x 10'2"
Bathroom	3.05 x 2.04	10'0" x 6'9"
<b>TOTAL FLOOR AREA</b>	<b>163.41m<sup>2</sup></b>	<b>1759ft<sup>2</sup></b>



GROUND FLOOR



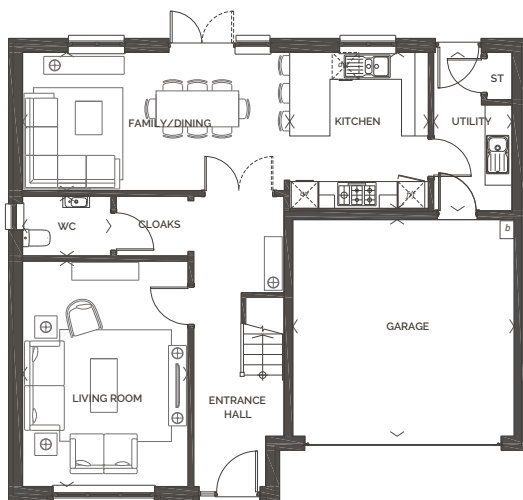
FIRST FLOOR



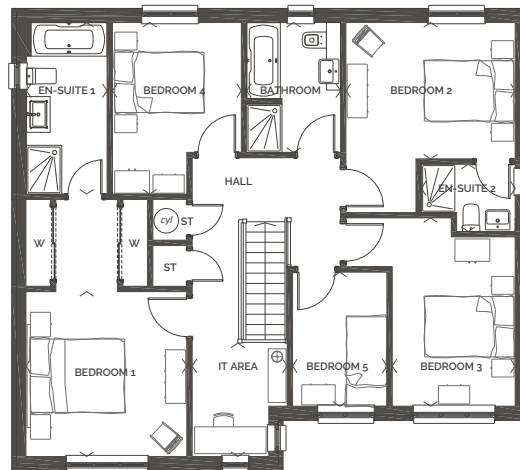
# Roslin

5 bedroom  
detached home with  
double garage

ROOM	M (WxD)	FT (WxD)
Living Room	3.70 x 5.04	12' 2" x 16' 6"
Kitchen	3.10 x 3.48	10' 2" x 11' 5"
Dining/Family Area	5.97 x 3.08	19' 7" x 10' 2"
Utility	1.75 x 3.54	5' 9" x 11' 7"
Bedroom 1	3.60 x 3.68	11' 10" x 12' 1"
En-Suite 1	1.80 x 3.83	5' 11" x 12' 7"
Bedroom 2	3.78 x 3.05	12' 5" x 10' 0"
En-suite 2	2.10 x 1.50	6' 11" x 4' 11"
Bedroom 3	2.75 x 4.21	9' 0" x 13' 10"
Bedroom 4	2.11 x 3.00	9' 6" x 12' 7"
Bedroom 5	2.07 x 3.11	6' 11" x 9' 10"
Bathroom	2.10 x 2.90	6' 11" x 9' 6"
IT Area	2.12 x 2.53	7' 0" x 8' 4"
<b>TOTAL FLOOR AREA</b>	<b>174.45m<sup>2</sup></b>	<b>1877ft<sup>2</sup></b>



**GROUND FLOOR**



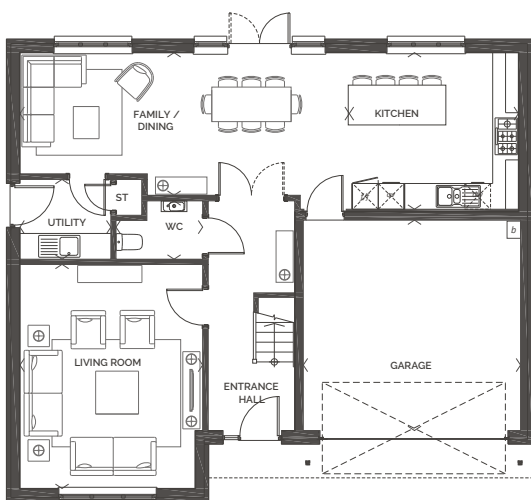
**FIRST FLOOR**



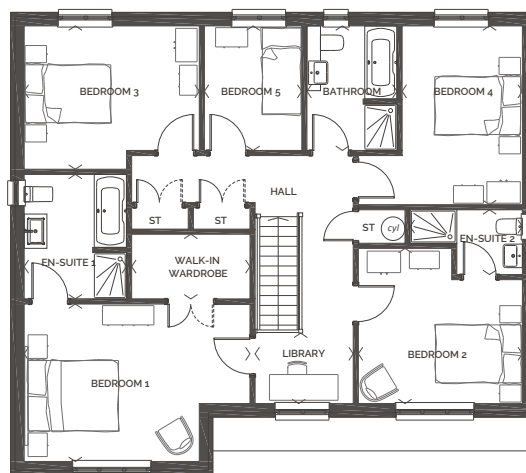
## Stratford

5 bedroom  
detached home with  
double garage

ROOM	MM (WxD)	FT (WxD)
Living Room	4.26 x 5.22	14' 0" x 17' 2"
Kitchen	3.94 x 3.65	12' 11" x 12' 0"
Family/Dining Area	7.68 x 3.32	25' 2" x 10' 11"
Utility	2.12 x 1.86	6' 11" x 6' 1"
Bedroom 1	5.26 x 3.67	17' 3" x 12' 1"
En-Suite 1	2.38 x 2.90	7' 10" x 9' 6"
Bedroom 2	3.82 x 3.62	12' 7" x 11' 11"
En-Suite 2	2.61 x 1.51	8' 7" x 4' 11"
Bedroom 3	4.08 x 3.34	13' 5" x 11' 0"
Bedroom 4	2.80 x 4.17	9' 2" x 13' 8"
Bedroom 5	2.27 x 2.90	7' 5" x 9' 6"
Bathroom	2.10 x 2.90	6' 11" x 9' 6"
Library	2.28 x 1.64	7' 6" x 5' 5"
<b>TOTAL FLOOR AREA</b>	<b>189.16m<sup>2</sup></b>	<b>2035ft<sup>2</sup></b>



GROUND FLOOR



FIRST FLOOR

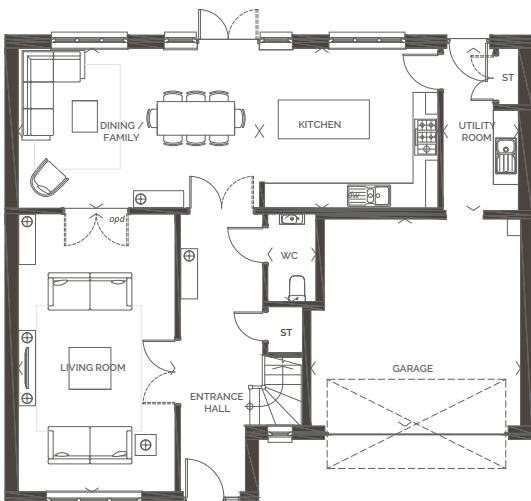




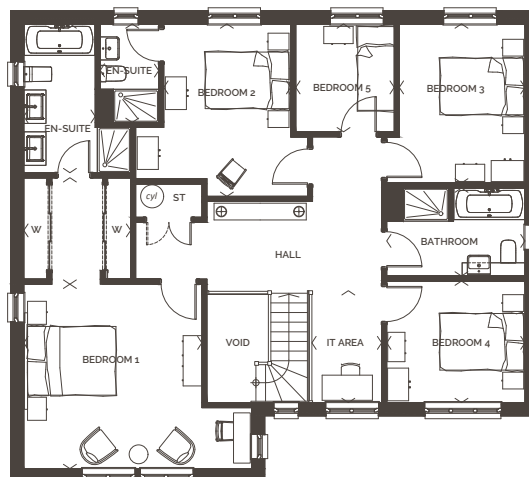
# Strathearn

5 bedroom detached home with double garage

ROOM	M (WxD)	FT (WxD)
Living Room	3.75 x 6.65	12' 4" x 21' 10"
Kitchen	4.27 x 3.82	14' 0" x 12' 7"
Dining/Family Area	5.77 x 3.82	18' 11" x 12' 7"
Utility	1.80 x 3.87	5' 11" x 12' 9"
Bedroom 1	4.25 x 4.40	13' 11" x 14' 5"
En-Suite 1	2.02 x 3.55	6' 8" x 11' 8"
Bedroom 2	3.03 x 4.46	9' 11" x 14' 8"
En-suite 2	1.39 x 2.30	4' 7" x 7' 7"
Bedroom 3	3.00 x 3.79	9' 10" x 12' 5"
Bedroom 4	3.30 x 2.90	10' 10" x 9' 6"
Bedroom 5	2.35 x 2.57	7' 9" x 8' 5"
Bathroom	3.30 x 2.10	10' 10" x 6' 11"
Library	1.66 x 2.67	5' 6" x 8' 9"
<b>TOTAL FLOOR AREA</b>	<b>207.16m<sup>2</sup></b>	<b>2229ft<sup>2</sup></b>



**GROUND FLOOR**




**FIRST FLOOR**

## Built with real people in mind

At Dundas Estates, all homes are attentively crafted to advance your lifestyle. We put our customers at the heart of what we do, helping you throughout your moving journey, with a personal touch.

### Contact us.

Find out more about Dargavel Village and discover a new way of living

 0345 853 5004

 [dargavelvillage@dundas.co.uk](mailto:dargavelvillage@dundas.co.uk)



## Development

Dargavel Village,  
Bishopton,  
PA7 5HP

☎ 0345 853 5004  
✉ [dargavelvillage@dundas.co.uk](mailto:dargavelvillage@dundas.co.uk)

## Our Head Office

Dundas Estates & Development Co. Ltd,  
Alderstone House,  
MacMillan Road  
Livingston,  
EH54 7AW

☎ 0345 853 5000  
✉ [sales@dundas.co.uk](mailto:sales@dundas.co.uk)

## Connect with us



Discover more at [dundas.co.uk](http://dundas.co.uk)

### Customer Notice

These particulars are prepared with care for the convenience of prospective purchasers. We operate a policy of continuous product development and therefore individual features, specification and elevational treatments may vary from time to time. Consequently, these particulars should be treated as general guidance only and should not be relied upon as describing any of the Specified Matters referred to in the Regulations made under the Property Misdescriptions Act 1991. Nor do they constitute a contract, part of a contract or a warranty.



**JAMES WALKER**  
LEITH

Dundas Estates & Development Co Ltd is the property development division of James Walker (Leith) Ltd, a quality construction company established in 1863. Registered Office: Alderstone House, MacMillan Road, Livingston. Registered in Scotland No.132918.