



96 RUSSELL STREET

JOHNSTONE

www.corumproperty.co.uk



2 | BEDROOMS

1 | BATHROOM

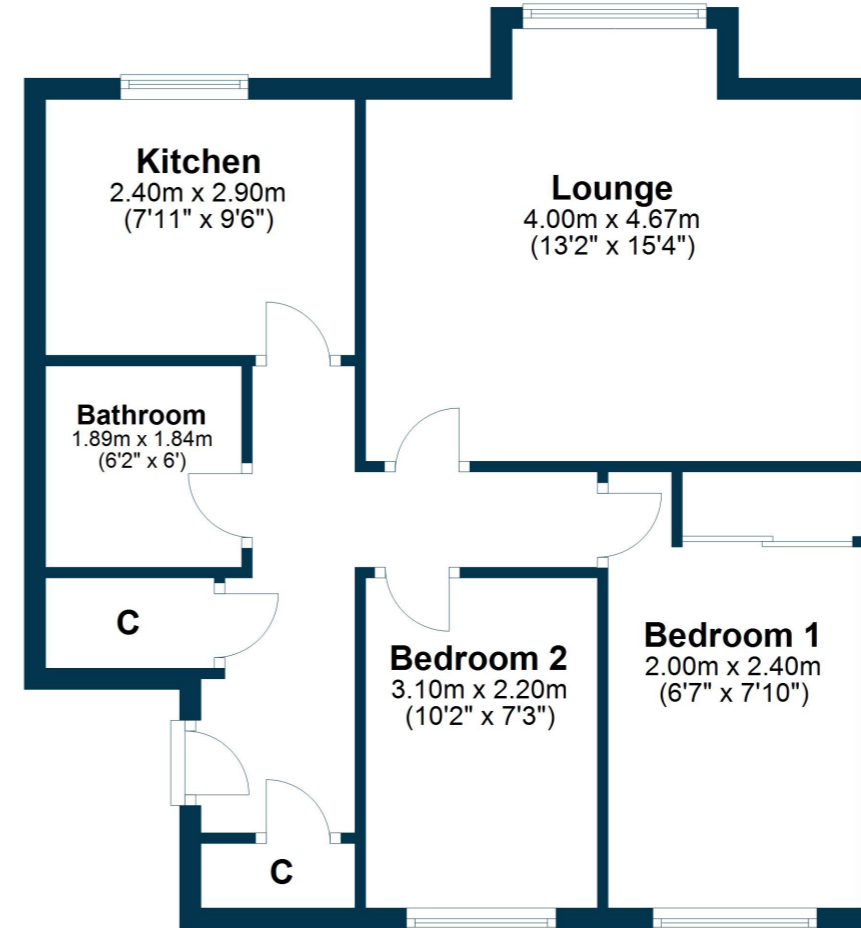
1 | PUBLIC ROOM

A charming upper floor apartment presented in contemporary decorative order.

- Upper floor position
- Views towards Ben Lomond
- Close to Johnstone train station
- Quick access to the M8
- Close to amenities and shops
- Modern interior
- Excellent storage space
- Well maintained communal areas

Amenities

Russell Street enjoys an ideal position close to Johnstone town centre and gives easy access to many local amenities nearby. There are excellent local transport links with bus services nearby and only a short distance from Johnstone railway station which connects to surrounding areas including Ayrshire, Paisley and Glasgow city centre. Johnstone itself provides a great selection of local shops and amenities. There is a large Morrison's store as well as Aldi's and Lidl's. There is excellent local schooling and easy access to the A737 bypass road which connects to the M8 motorway network. Handy for the Pheonix Retail Park in Paisley.



Sat Nav:
96 Russell Street, Johnstone, PA5 8EZ

BW2419

*All measurements and distances are approximate.
Floorplans are for illustration purposes and may not be to scale.

For the full home report visit
www.corumproperty.co.uk



WE'RE **SOLD** ON
YOUR FUTURE


C O R U M

Corum Bridge of Weir
2 Windsor Place, Main Street, Bridge Of Weir, PA11 3AF

T: 01505 691 400

E: bridgeofweir@corumproperty.co.uk

www.corumproperty.co.uk