

# TRALIN HOUSE

---

## MUGDOCK



c o r u m

[corumproperty.co.uk](http://corumproperty.co.uk)











**5/6** | BEDROOMS  
**6** | BATHROOMS  
**4/5** | PUBLIC ROOMS

**This magnificent, newly refurbished, six bedroom detached villa, extending to circa. 5414 square feet, is set within attractive, mature gardens of circa. 1.5 acres, with commanding south facing views over Glasgow.**

The stylish interior offers:- imposing reception hall, elegant formal lounge/dining area, with open plan kitchen, featuring bi-fold doors onto a south facing terrace, family room/bar, home cinema, utility room, with laundry off and cloakroom/wc. At landing level, there is a playroom/bedroom 6 and, on the first floor, there are five bedrooms, all en-suite, with the principal having a feature double height floor to ceiling glass window, south facing balcony, feature wood burning fire and a dressing room.

In addition, there is a double garage, with gym/home office above.

The property benefits from Sonos and speakers built into the bar room and main open plan kitchen/living area of the ground floor, CCTV throughout, a full alarm system and electric gates.

Beautiful landscaped gardens surround the property, with mature tree screening, and there is a south facing terrace, featuring a pergola, with full outdoor kitchen and hot tub.

The property benefits from gas central heating and double glazing.





































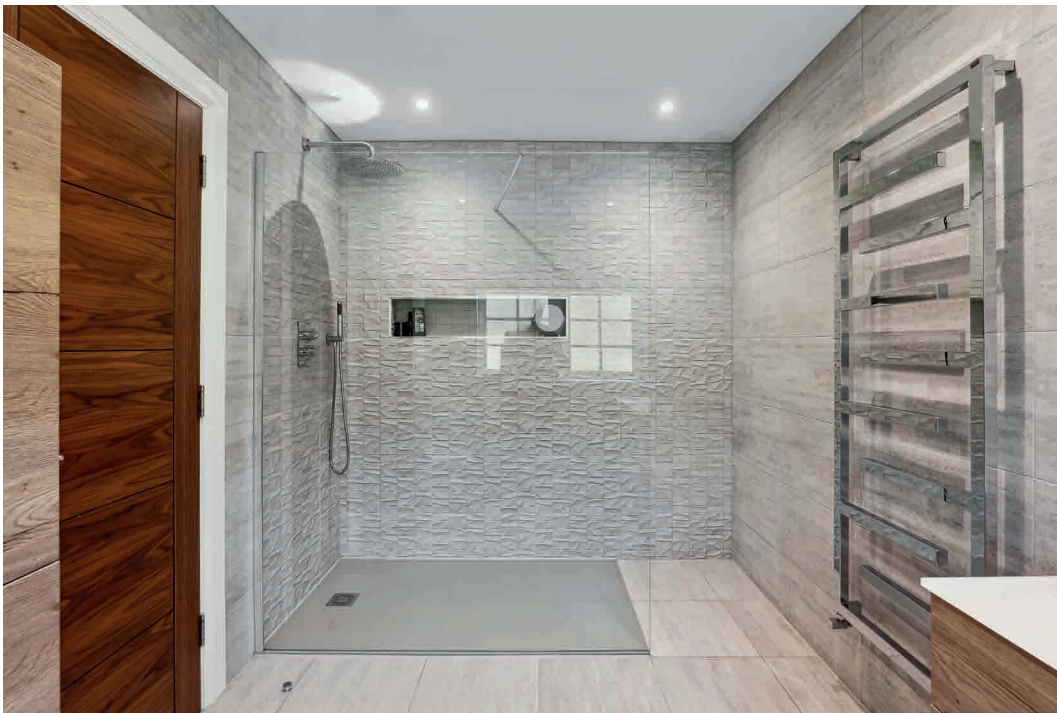
























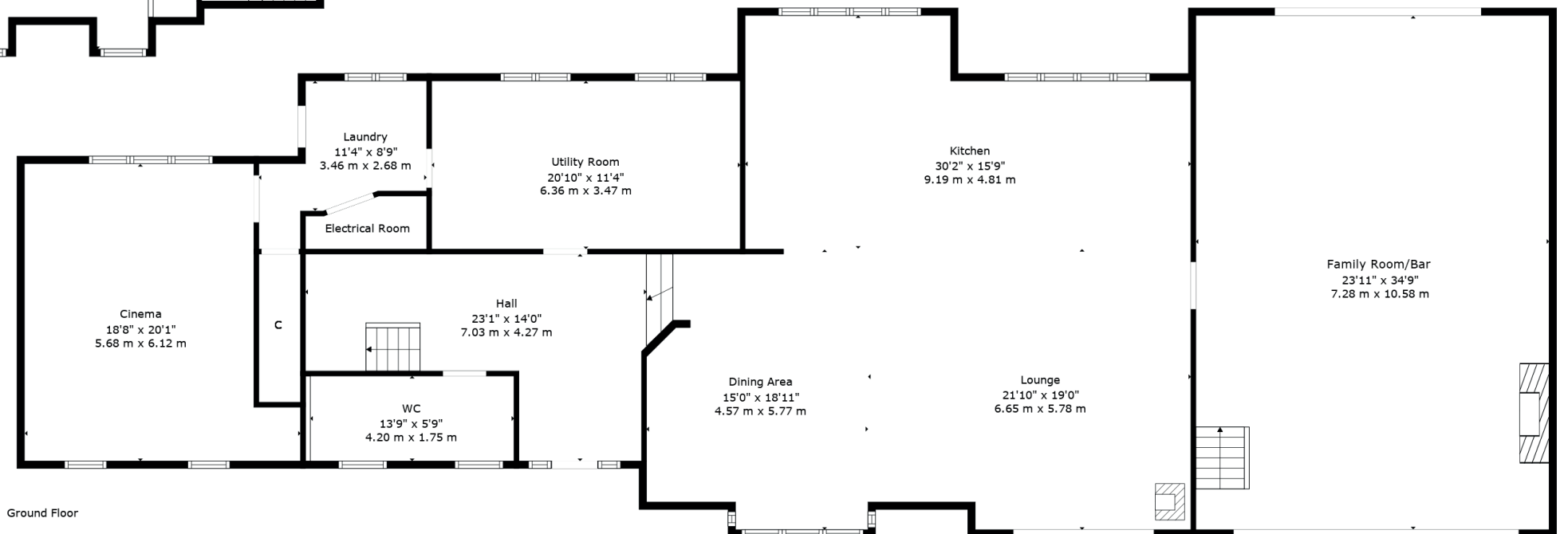
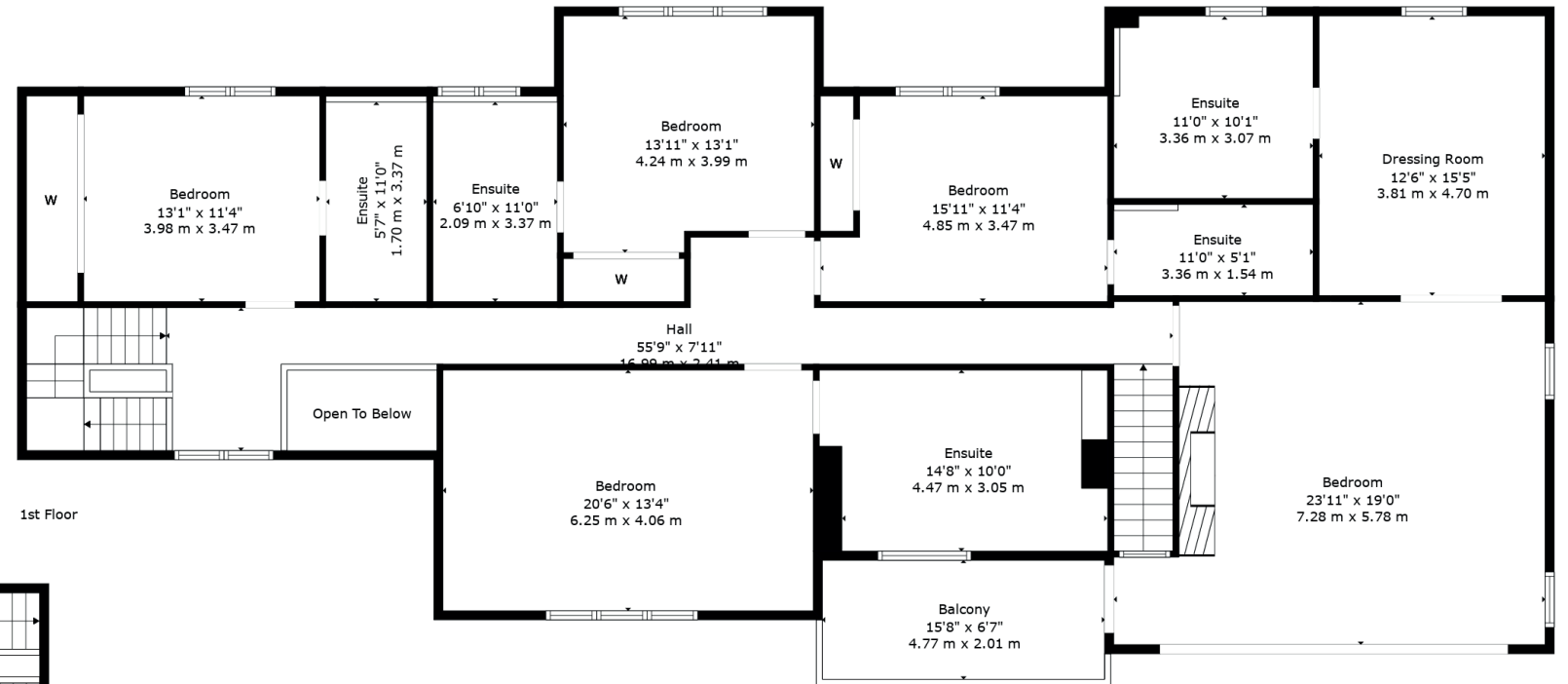
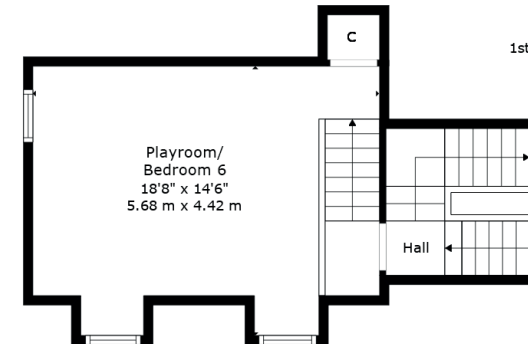
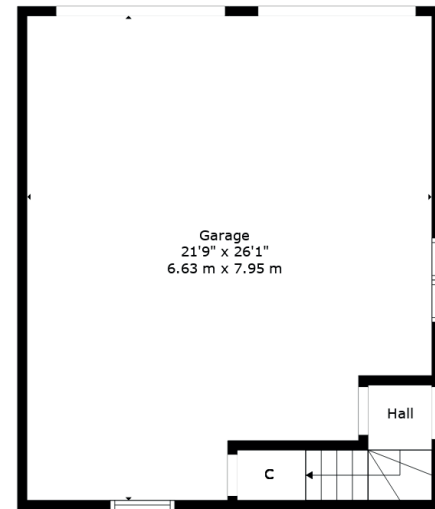












\*\* Floorplans are for illustration purposes and may not be to scale.









c o r u m

1 Canniesburn Toll, Bearsden G61 2QU

**T:** 0141 942 5888

**E:** bearsdenenq@corumproperty.co.uk

**[www.corumproperty.co.uk](http://www.corumproperty.co.uk)**