



43 ELDERBANK
BEARSDEN

www.corumproperty.co.uk





2 | BEDROOMS

2 | BATHROOMS

1 | PUBLIC ROOM

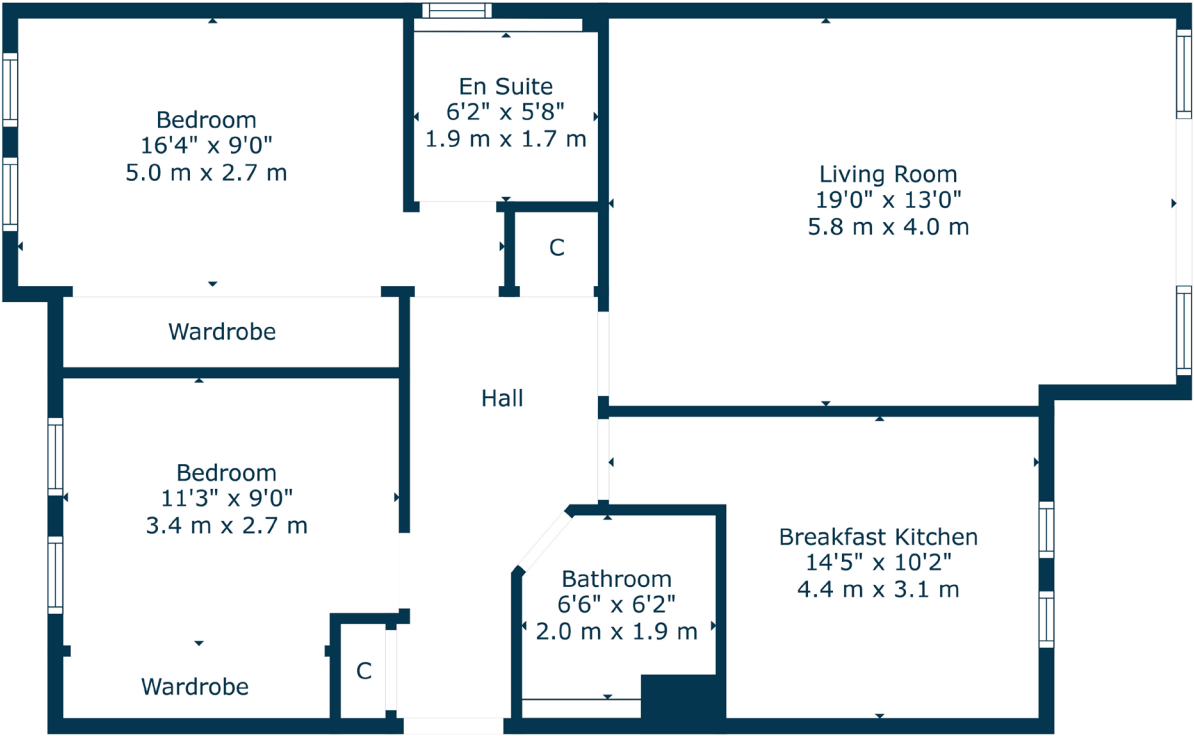
Commanding an elevated ground floor position and a peaceful setting within a popular Bearsden development, this generously proportioned two-bedroom apartment was built by Miller Homes in the 1990s. The property offers a lovely private outlook, large communal gardens to the rear and residents' parking.

Entry to the building is gained via a secure entry system into a well-kept communal hallway. The accommodation comprises:- welcoming reception hallway, with storage off, large and bright main lounge, with pleasant outlook, large, modern breakfasting kitchen, featuring a range of base and wall mounted units, large principal bedroom, benefitting from fitted storage and an en-suite shower room off, second good sized double bedroom, located to the rear, and, again, having fitted wardrobes, and, completing the accommodation, a three piece main bathroom, with over bath shower.

The specification includes gas central heating, double glazing and secure entry.

This is a tremendous modern apartment that will be ideal for those looking for a convenient location, peaceful setting and ground floor position.





The suburb of Bearsden is one of Glasgow's most desired districts in which to reside. There are numerous highly acclaimed educational facilities at both Primary and Secondary levels and leisure facilities are plentiful with a choice of private and state gyms and clubs in abundance. Locally, there is an excellent selection of shops and services at Bearsden Cross along with restaurants, cafes and bars. There are excellent bus links nearby and train stations can be found at Hillfoot, Westerton and Bearsden providing regular services into Glasgow's West End and City Centre, including a service to Edinburgh.

Glasgow Airport can be reached within twenty-five minutes off peak and, to the north of Bearsden is the world renowned Loch Lomond and The Trossachs National Park.

BD3779 | Sat Nav: 43 Elderbank, Bearsden G61 1ND

For the full home report visit www.corumproperty.co.uk

* All measurements and distances are approximate Floorplans are for illustration purposes and may not be to scale.

WE'RE **SOLD** ON
YOUR FUTURE



Corum Bearsden
1 Canniesburn Toll, Bearsden, G61 2QU

Tel: 0141 942 5888

Email: bearsdenenq@corumproperty.co.uk

www.corumproperty.co.uk