



FLAT 13, PINWOOD
1 MARYHILL ROAD, BEARSDEN

www.corumproperty.co.uk





2 | BEDROOMS

1 | BATHROOM

1 | PUBLIC ROOM

Conveniently located, Pinewood is a modern development of apartments situated by the Canniesburn area of Bearsden.

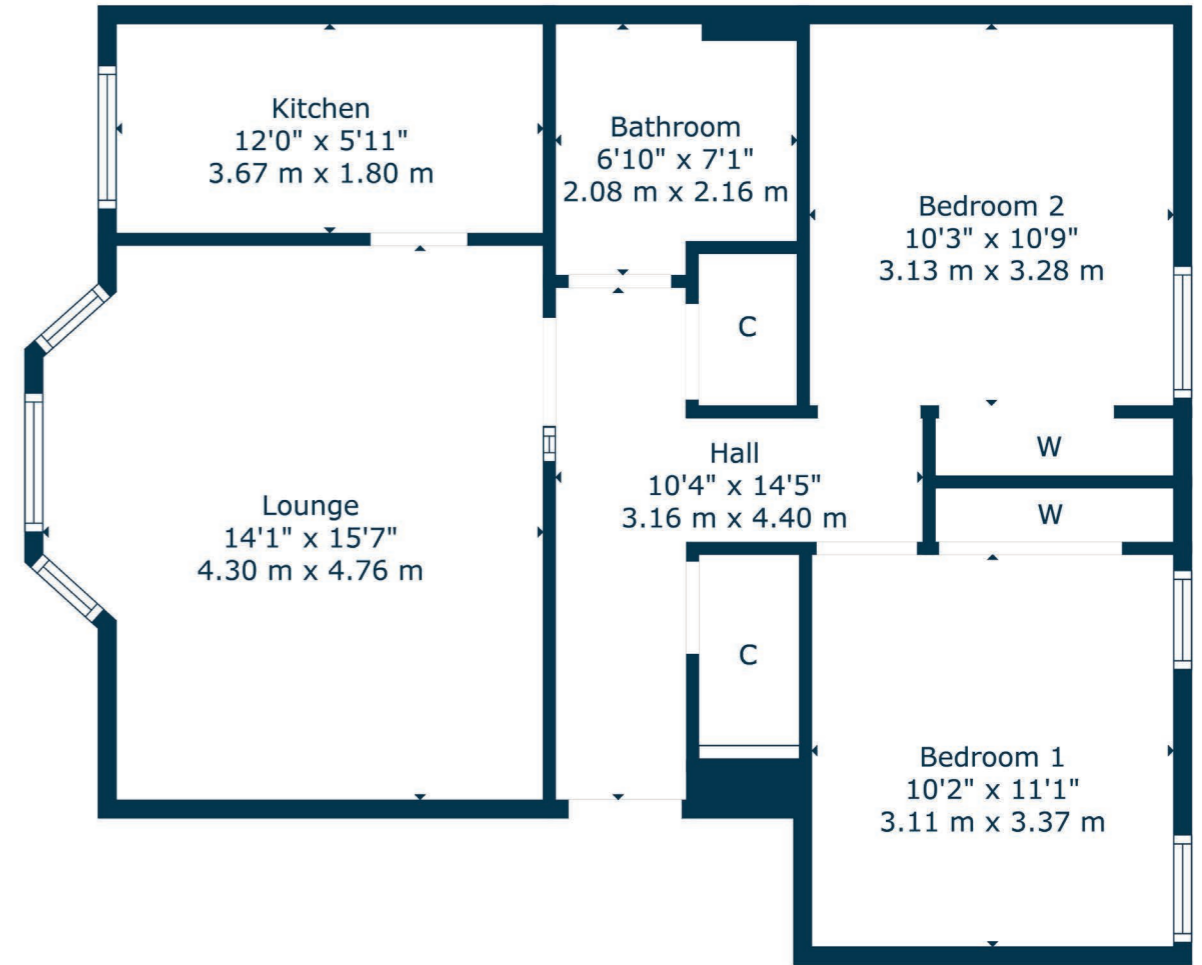
Conveniently located, Pinewood is a modern development of apartments situated by the Canniesburn area of Bearsden.

Initially entered via a security entry system, providing access to a communal entrance hall, this lovely two bedroom flat is situated on the second floor and offers accommodation comprising:- a welcoming reception hallway, with two spacious storage cupboards, a good sized lounge, featuring a beautiful bay window to the front of the building, and a contemporary style fitted kitchen, with integrated hob, oven and extractor fan, and benefitting from beautiful views. There are also two spacious double bedrooms, both with fitted wardrobes and providing views to a tree lined aspect. Completing the accommodation, there is a refitted main shower room, with walk in double shower enclosure.

The property is further enhanced by electric storage heating and double glazing.

Externally, the flat has both allocated resident and visitor parking and well maintained courtyard style garden grounds. The gardens are landscaped, surrounded by trees and plants, with a brick built bin store.





The suburb of Bearsden is one of Glasgow's most desired districts in which to reside. There are numerous highly acclaimed educational facilities at both Primary and Secondary levels and leisure facilities are plentiful with a choice of private and state gyms and clubs in abundance. Locally, there is an excellent selection of shops and services at Bearsden Cross along with restaurants, cafes and bars. There are excellent bus links nearby and train stations can be found at Hillfoot, Westerton and Bearsden providing regular services into Glasgow's West End and City Centre, including a service to Edinburgh.

Glasgow Airport can be reached within twenty-five minutes off peak and, to the north of Bearsden is the world renowned Loch Lomond and The Trossachs National Park.

BD3773 | Sat Nav: Flat 13, Pinewood, 1 Maryhill Road, Bearsden, G61 1QP

For the full home report visit www.corumproperty.co.uk

* All measurements and distances are approximate Floorplans are for illustration purposes and may not be to scale.



WE'RE **SOLD** ON
YOUR FUTURE



Corum Bearsden
1 Canniesburn Toll, Bearsden, G61 2QU

Tel: 0141 942 5888

Email: bearsdenenq@corumproperty.co.uk

www.corumproperty.co.uk