



63 NORWOOD PARK

BEARSDEN

www.corumproperty.co.uk



c o r u m



3 | BEDROOMS

2 | BATHROOMS

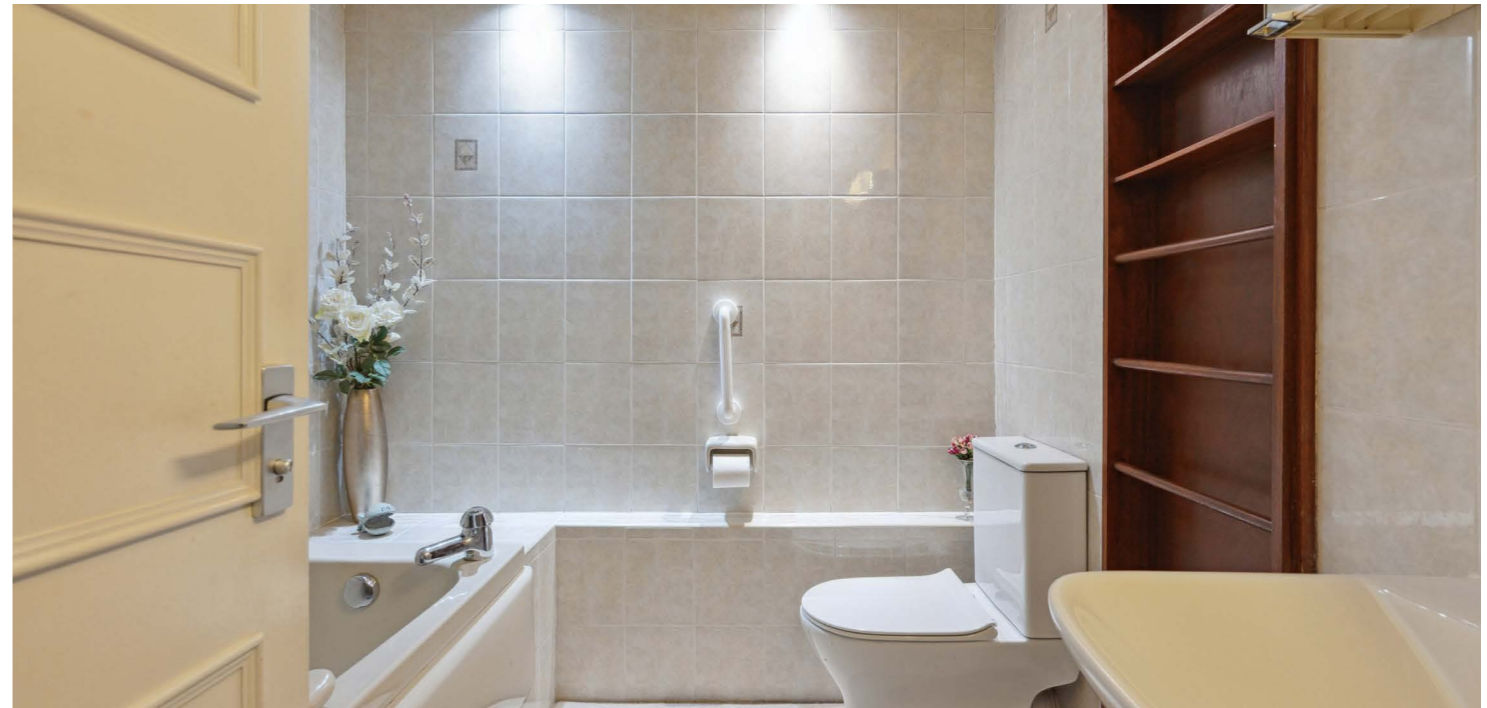
1 | PUBLIC ROOM

Delivering a much sought after garden level position, within the admired Norwood Park Development, and boasting direct and uninterrupted views over St. Germain's Loch, this expansive three-bedroom flat is ideally placed for those wishing to live in a peaceful setting within Bearsden.

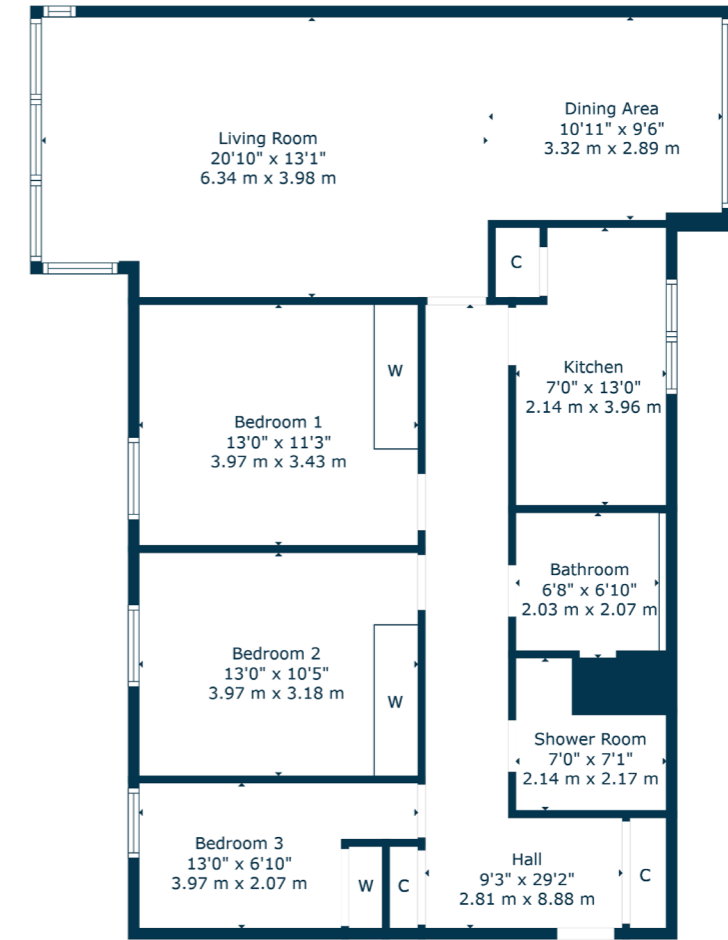
The generous apartment comprises:- spacious, welcoming, reception hallway, with storage cupboards off, a large, dual aspect, lounge and dining room, leading out to small private garden, to one end, and delivering outstanding views towards the loch at the other, a well appointed kitchen, two good sized bedrooms and one smaller bedroom, ideal for a home office or study, a family bathroom, with three piece suite, and an additional separate shower room.

The property further benefits from a system of electric warm-air heating, double glazing, secure entry, lift and stair access to all levels and beautifully landscaped garden grounds. In addition, the apartment benefits from its own lock-up garage.









The suburb of Bearsden is one of Glasgow's most desired districts in which to reside. There are numerous highly acclaimed educational facilities at both Primary and Secondary levels and leisure facilities are plentiful with a choice of private and state gyms and clubs in abundance. Locally, there is an excellent selection of shops and services at Bearsden Cross along with restaurants, cafes and bars. There are excellent bus links nearby and train stations can be found at Hillfoot, Westerton and Bearsden providing regular services into Glasgow's West End and City Centre, including a service to Edinburgh.

Glasgow Airport can be reached within twenty-five minutes off peak and, to the north of Bearsden is the world renowned Loch Lomond and The Trossachs National Park.

BD3765 | Sat Nav: 63 Norwood Park, Bearsden, G61 2RZ

For the full home report visit www.corumproperty.co.uk

* All measurements and distances are approximate Floorplans are for illustration purposes and may not be to scale.



WE'RE **SOLD** ON
YOUR FUTURE



Corum Bearsden
1 Canniesburn Toll, Bearsden, G61 2QU

Tel: 0141 942 5888

Email: bearsdenenq@corumproperty.co.uk

www.corumproperty.co.uk