

CAIRNDHU

RHU ROAD LOWER | HELENSBURGH | G84 8PL

SECOND FLOOR APARTMENT 2

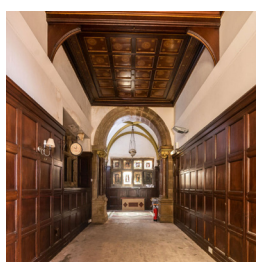
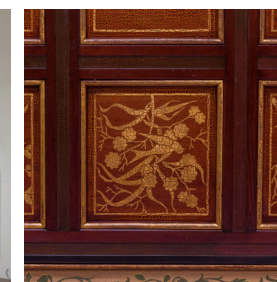
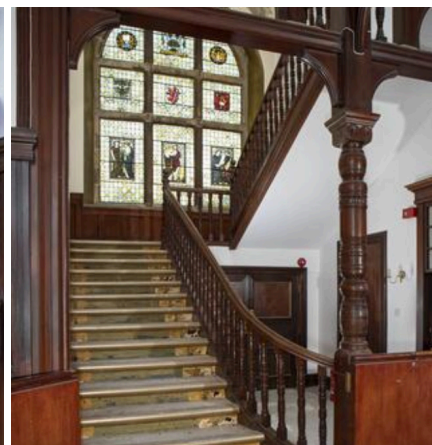
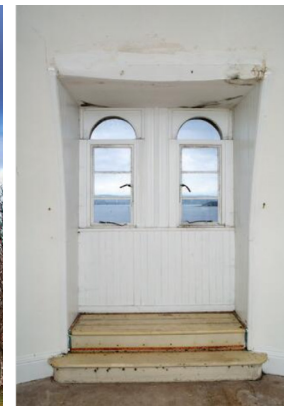
“THE DOME”

PANACEA homes

CAIRNDHU

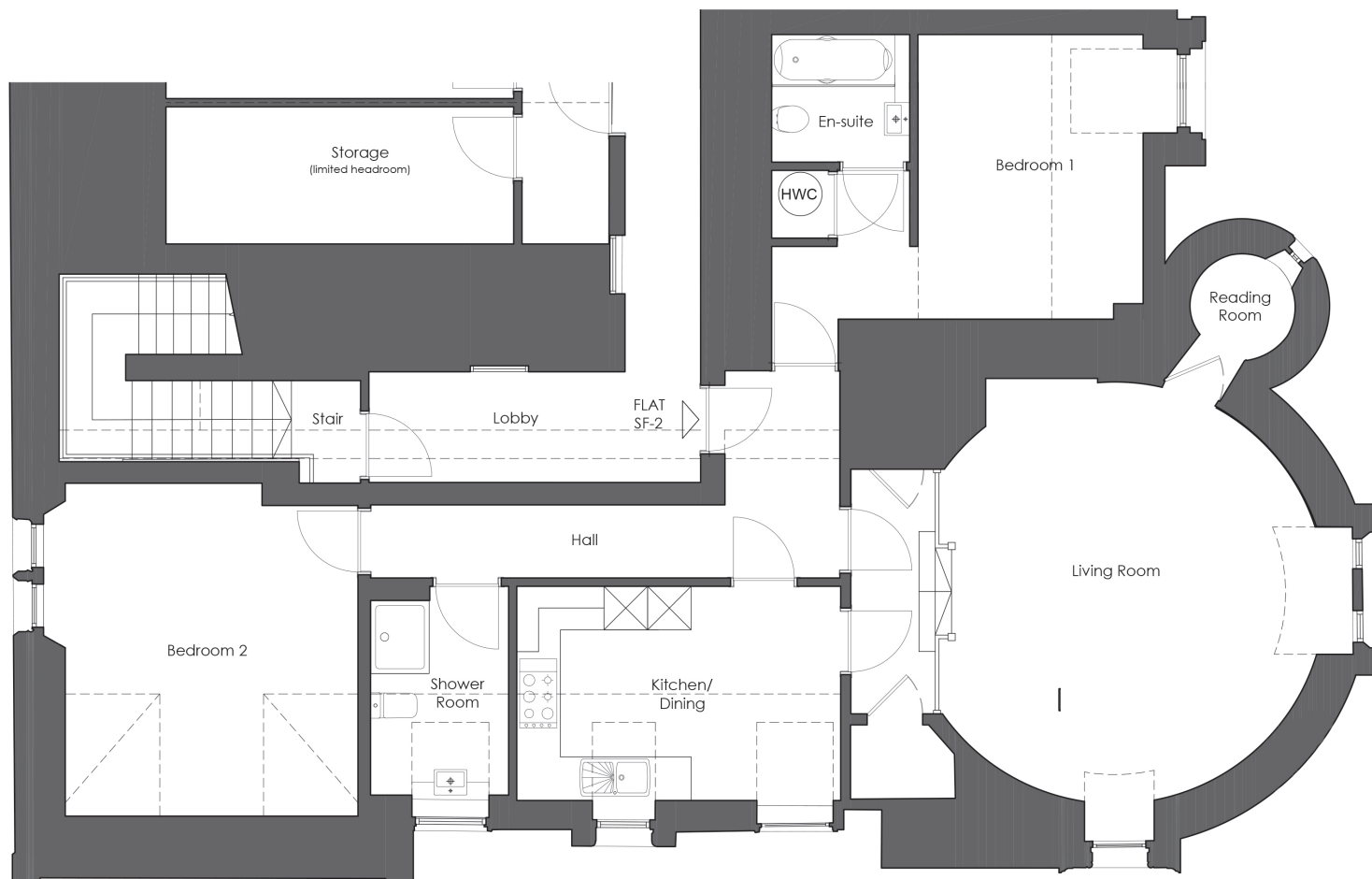
SECOND FLOOR APT 2
"THE DOME"2 BEDROOM APARTMENT | 113M2 | 1216FT2
KEY FEATURES

- A French Renaissance style villa, Cairndhu House is widely considered as the ultimate example of Leiper's Franco Scottish style. The original house consists of a mixture of coursed grey sandstone and cream ashlar sandstone with decorative cornices and frieze to the south elevation in keeping with the French Renaissance style exterior
- Accessed via the original decorative panelled entrance hall showcasing highly elaborate ceilings, mirrored stone and timber fireplace as well as ornate stained glass windows created by the renowned artist Daniel Cottier
- Alternatively accessed by 2 person passenger lift
- Featuring a truly breathtaking, incredibly unique domed south facing living room
- A charming circular snug formed inside the turret of the house creates a magical hideaway full of character completing the stunning living space
- Traditional double glazed windows encapsulate a magnificent view of the Clyde with it's regular flotilla of sail boats and cruise liners
- South facing master bedroom with fantastic waterfront views further benefits from a stylish fitted wardrobe & designer en suite by PORCELANOSA extended to the individually tiled bath panel
- The generously sized second double bedroom with views of the beautiful Fruin hills
- Designer German dining kitchen with views towards Rhu and the marina, equipped with state of the art BOSCH integrated appliances
- PORCELANOSA have exclusively curated luxury tiling designs for the main shower room and en suite from their award winning tile range
- Heating provided by high efficiency electric boiler with hot water cyclinder and programmable thermostat
- Luxurious AMTICO flooring and deluxe carpets throughout
- Storage accessed off the communal hall
- Chrome sockets to kitchen, living room and hall. USB sockets to kitchen and bedrooms
- 2 allocated parking spaces and access to E.V. charging infrastructure
- Communal mature garden grounds complete Cairndhu House



PORCELANOSA
 **BOSCH**

DRAFT

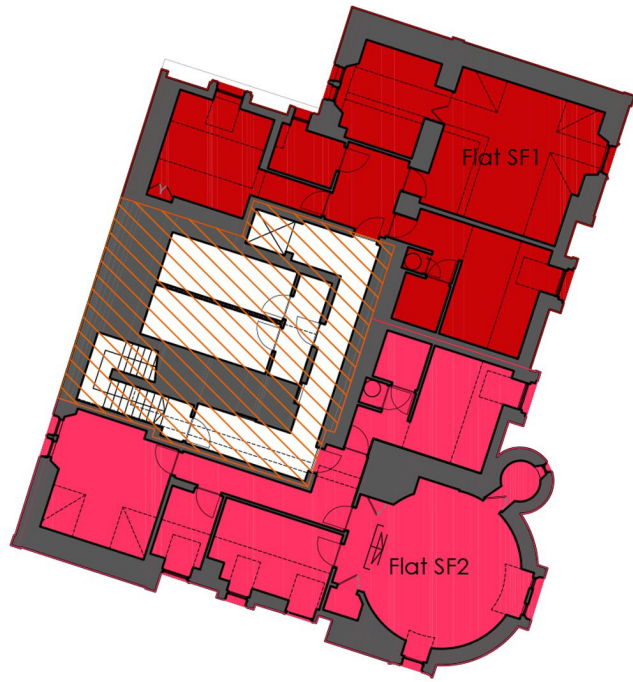


CAIRNDHU
 SECOND FLOOR | APARTMENT 2
 'THE DOME'
 2 BEDROOM APARTMENT | 113M2 | 1216FT2

DIMENSIONS

Space	Metres	Feet
Living room	6.91 x 6.37	22' 8" x 20' 11"
Reading room	1.47 dia	4' 10" dia
Bedroom 1	3.10 x 3.92	10' 2" x 12' 10"
En suite	1.90 x 1.76	6' 3" x 5' 9"
Bedroom 2	4.03 x 4.58	13' 3" x 15' 1"
Kitchen / Dining	4.46 x 2.95	14' 8" x 9' 8"
Hall	6.46 x 2.85	21' 3" x 9' 4"
Shower room	1.90 x 2.87	6' 3" x 9' 5"

NOTE:
 Images are purely indicative of style and specification. Similarly descriptions, floor plans, kitchen layouts and sizes/dimensions are approximate and do not form any part of any contract.



CAIRNDHU HOUSE & ESTATE

RHU ROAD LOWER | HELENSBURGH

