



33 CRAIGHTON GARDENS

LENNOXTOWN

www.corumproperty.co.uk





- 1 | BEDROOM
- 1 | BATHROOM
- 1 | PUBLIC ROOM

Enjoying a peaceful location, just on the edge of the town, this well presented upper apartment is located within a popular residential area, close to local amenities

The accommodation comprises:- lower entrance hallway, with stairs to the upper hallway, large and bright lounge, with storage off, a generously proportioned and well-equipped modern galley style kitchen, which is open plan to the lounge, a well-appointed three-piece bathroom, featuring an over bath shower, and, completing the accommodation, a good-sized double bedroom, benefitting from fitted storage.

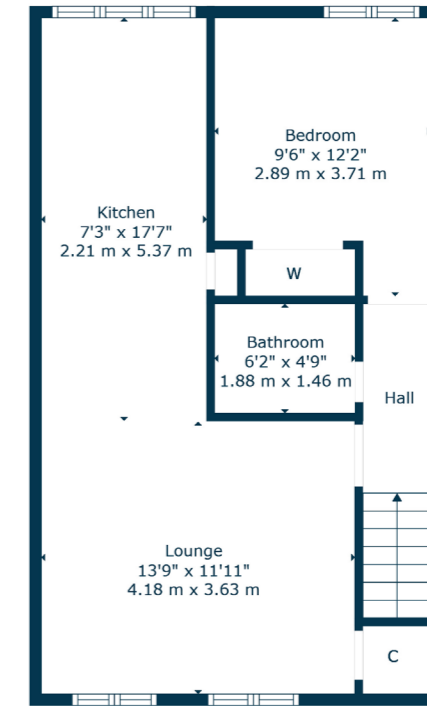
Particular note should be drawn to the fantastic views and peaceful setting.

Outside, there is residents' parking and plentiful green space surrounding the property.





Ground Floor



Floor 1

Nestled at the foot of the Campsie Fells, Lennoxton has a number of local shops and amenities. There are two local primary schools, with a further one in nearby Milton of Campsie. Secondary schooling can be found in Lenzie, Kirkintilloch and Kilsyth.

Lennoxton is located approximately equidistant between the villages of Torrance and Strathblane and is surrounded by some beautiful countryside, offering a wealth of opportunity to explore and enjoy a generous choice of outdoor facilities and amenities, including walking, family cycling on the Strathkelvin railway path and other popular road cycling routes, horse riding, golf. There is also easy access to the Campsie Fells, Mugdock Country Park and Loch Lomond and The Trossachs National Park. Access to Glasgow's excellent motorway network is only a short drive away.

BD3711 | Sat Nav: 33 Craighton Gardens, Lennoxton, G66 7NX

For the full home report visit www.corumproperty.co.uk

* All measurements and distances are approximate Floorplans are for illustration purposes and may not be to scale.



WE'RE **SOLD** ON
YOUR FUTURE



Corum Bearsden
1 Canniesburn Toll, Bearsden, G61 2QU

Tel: 0141 942 5888

Email: bearsdenenq@corumproperty.co.uk

www.corumproperty.co.uk