



53 NORWOOD PARK

BEARSDEN

www.corumproperty.co.uk





3 | BEDROOMS

2 | BATHROOMS

1 | PUBLIC ROOM

Delivering wonderful views to St. Germain's Loch, this expansive three-bedroom fourth floor flat is located within the admired Norwood Park Development and is ideally placed for those wishing to live in a peaceful setting within Bearsden.

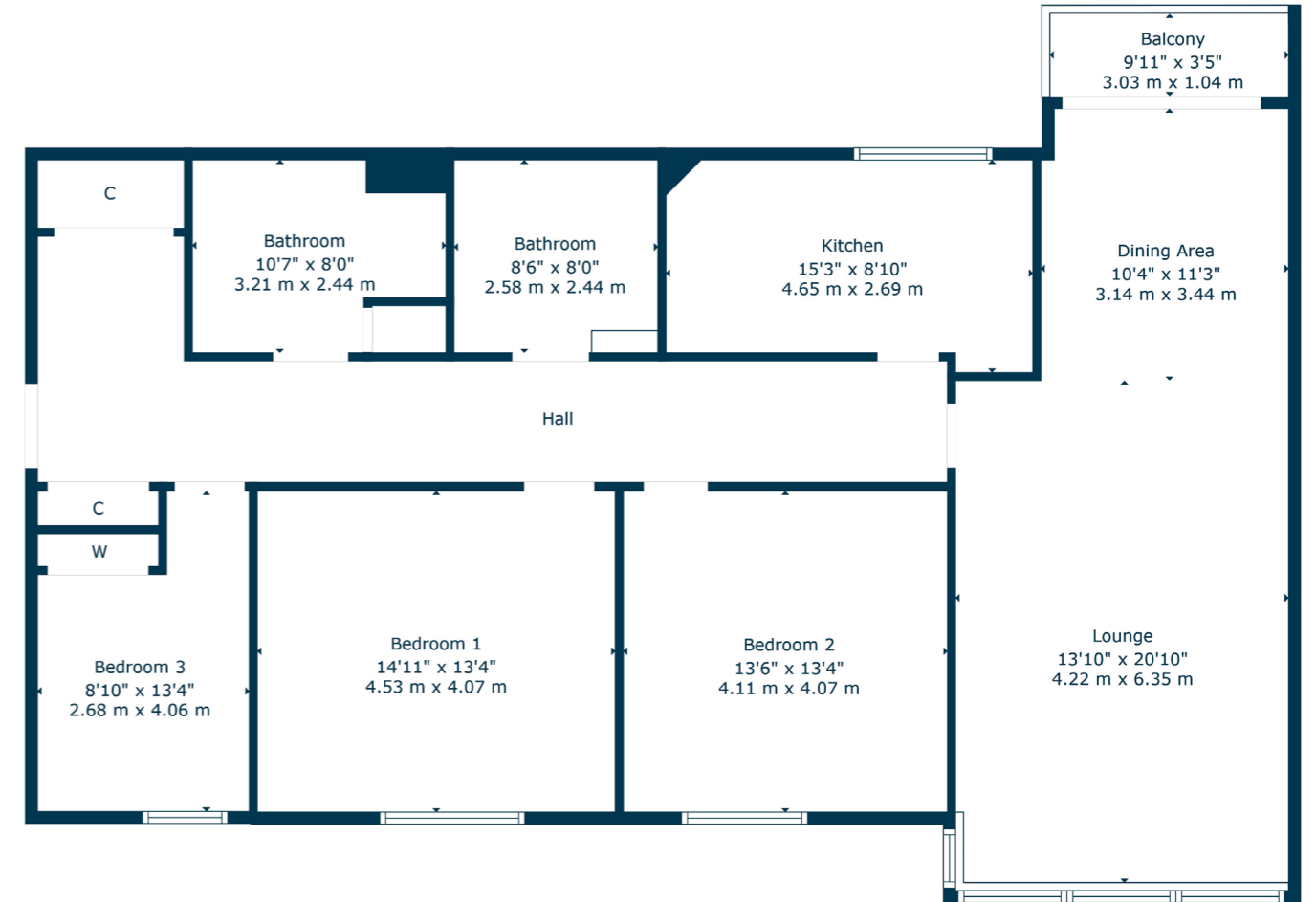
The generous and very bright apartment comprises: spacious welcoming reception hallway, with a very useful large cloaks cupboard and a further storage cupboard, a large dual aspect lounge and dining room, with full length sliding doors leading out to a balcony providing fantastic views to St. Germain's Loch and the communal grounds to the rear, well appointed modern kitchen with integrated appliances, two good sized bedrooms and one smaller bedroom, a family bathroom with three piece suite and shower over the bath, and a separate shower room with utility provision.

The property further benefits from electric wet central heating, double glazing, secure entry, lift and stair access to all levels, beautifully landscaped garden grounds and the apartment benefits from its own lock-up garage.









The suburb of Bearsden is one of Glasgow's most desired districts in which to reside. There are numerous highly acclaimed educational facilities at both Primary and Secondary levels and leisure facilities are plentiful with a choice of private and state gyms and clubs in abundance. Locally, there is an excellent selection of shops and services at Bearsden Cross along with restaurants, cafes and bars. There are excellent bus links nearby and train stations can be found at Hillfoot, Westerton and Bearsden providing regular services into Glasgow's West End and City Centre, including a service to Edinburgh.

Glasgow Airport can be reached within twenty-five minutes off peak and, to the north of Bearsden is the world renowned Loch Lomond and The Trossachs National Park.

BD3667 | Sat Nav: 53 Norwood Park, Bearsden, G61 2RZ

For the full home report visit www.corumproperty.co.uk

* All measurements and distances are approximate Floorplans are for illustration purposes and may not be to scale.



WE'RE **SOLD** ON
YOUR FUTURE



C O R U M

Corum Bearsden
1 Canniesburn Toll, Bearsden, G61 2QU

Tel: 0141 942 5888

Email: bearsdenenq@corumproperty.co.uk

www.corumproperty.co.uk