



1 TINTO ROAD
BEARSDEN

www.corumproperty.co.uk





2 | BEDROOMS

1 | BATHROOM

2 | PUBLIC ROOMS

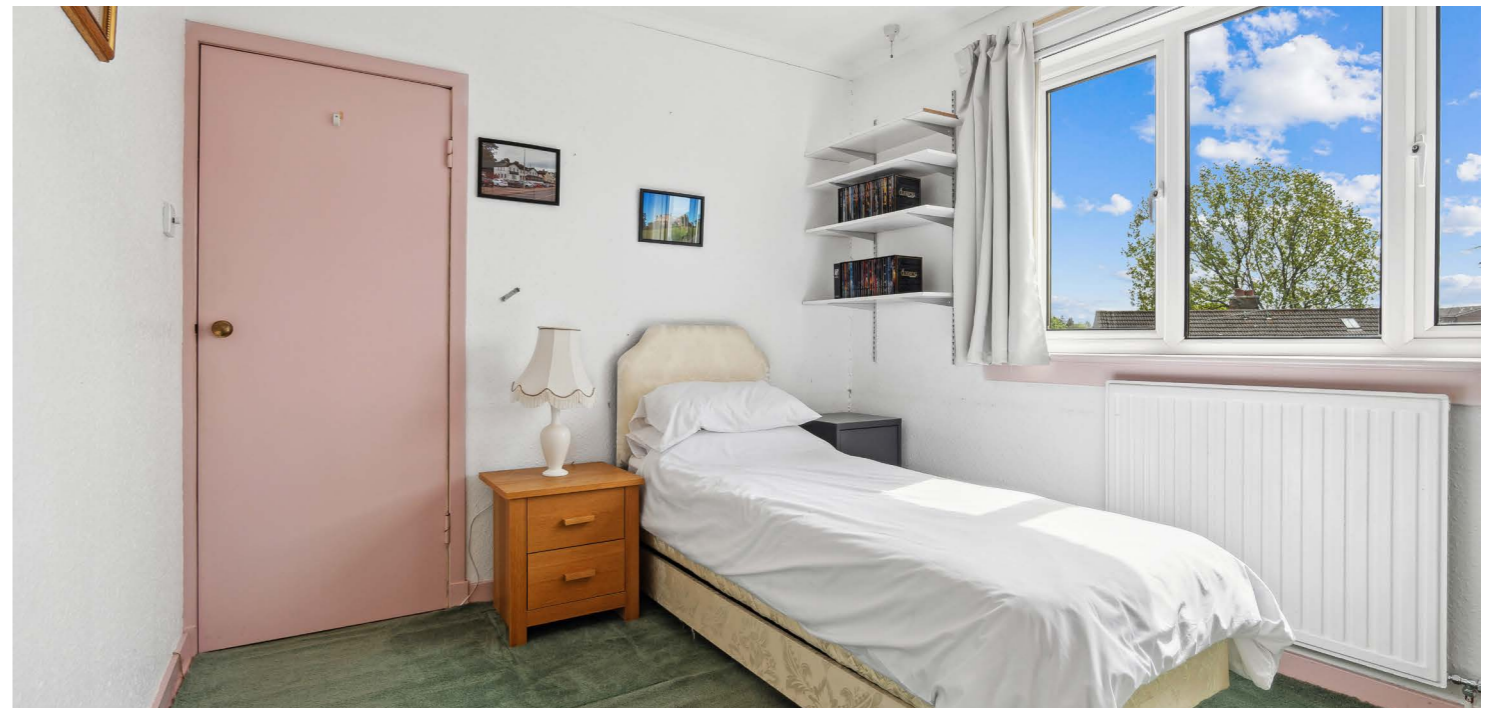
Situated in the Bonnaughton district of Bearsden and within the catchment area for Baljaffray Primary and Bearsden Academy, this two bedroom semi-detached villa benefits from an expansive corner plot location. The property is in need of modernisation internally, however, offers a superb opportunity to acquire, tailor and potentially extend, subject to the necessary planning permission.

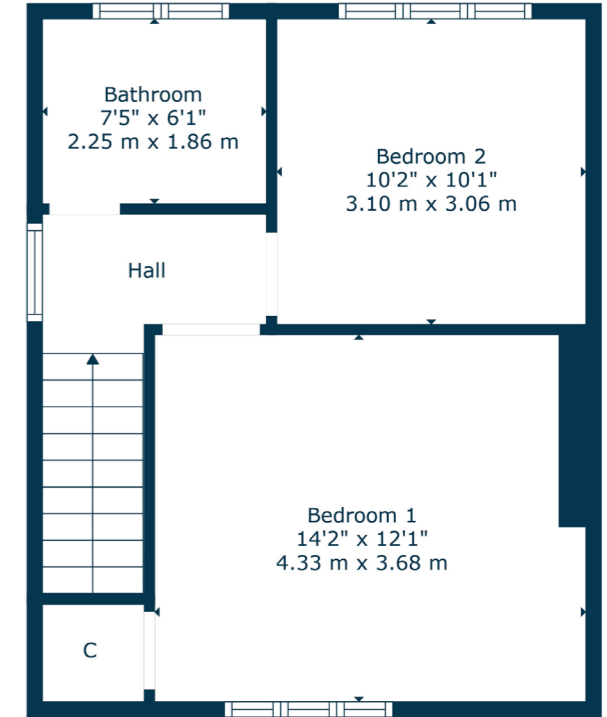
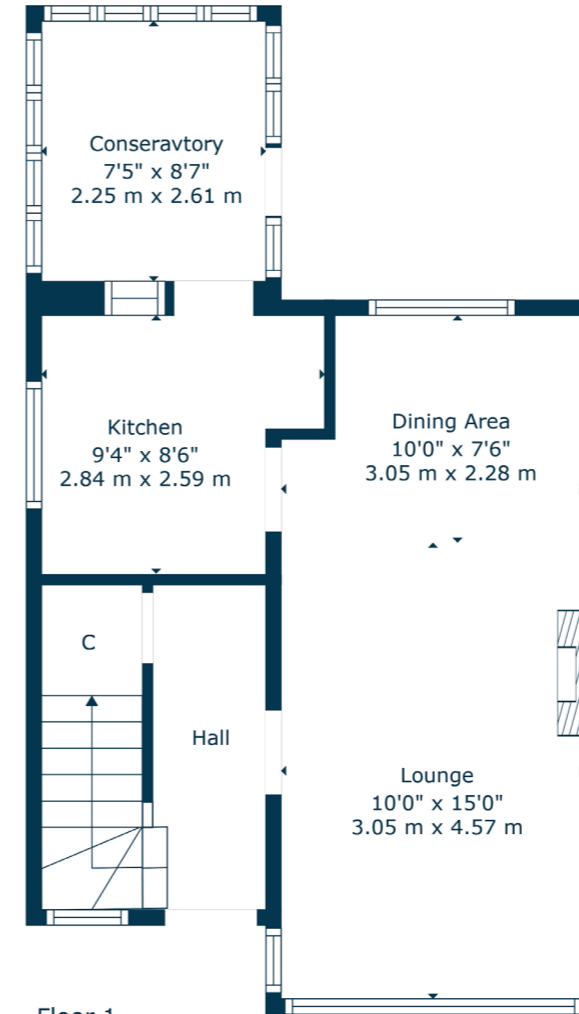
The accommodation on offer extends to:- entrance hall, with staircase to upper apartments, bright living room, featuring windows to both front and rear, kitchen, which leads to a rear facing sunroom, with door to the rear, two double bedrooms and a family bathroom. The property has gas central heating and double glazing.

Externally, there are extensive garden grounds to the front, and, to the rear, there are courtyard style gardens and a single car garage.









The suburb of Bearsden is one of Glasgow's most desired districts in which to reside. There are numerous highly acclaimed educational facilities at both Primary and Secondary levels and leisure facilities are plentiful with a choice of private and state gyms and clubs in abundance. Locally, there is an excellent selection of shops and services at Bearsden Cross along with restaurants, cafes and bars. There are excellent bus links nearby and train stations can be found at Hillfoot, Westerton and Bearsden providing regular services into Glasgow's West End and City Centre, including a service to Edinburgh.

Glasgow Airport can be reached within twenty-five minutes off peak and, to the north of Bearsden is the world renowned Loch Lomond and The Trossachs National Park.

BD3652 | Sat Nav: 1 Tinto Road, Bearsden, G61 4EE

For the full home report visit www.corumproperty.co.uk

* All measurements and distances are approximate Floorplans are for illustration purposes and may not be to scale.



WE'RE **SOLD** ON
YOUR FUTURE



Corum Bearsden
1 Canniesburn Toll, Bearsden, G61 2QU

Tel: 0141 942 5888

Email: bearsdenenq@corumproperty.co.uk

www.corumproperty.co.uk