



SAMUEL WOOD

Cherrywood Henley Road, Ludlow, Shropshire, SY8 1QZ

Asking Price £325,000



Cherrywood Henley Road

Ludlow, Shropshire, SY8 1QZ



- Spacious 3 Bedroom old style semi
- Well presented interiors
- Double width driveway parking and garage
- Non estate location, close to town
- Gas heating, double glazing, woodburner
- Attractive and landscaped garden

This attractive old style 3 bedroom semi-detached house sits in a non-estate position within easy reach of Ludlow's historic town centre. Outside the property enjoys excellent driveway parking and integral garage. To the rear there is a well maintained and good sized garden. Accommodation benefitting from upvc double glazing, gas fired heating and woodburner, is well presented and briefly includes: Entrance Hall, Living Room, Dining Room, Conservatory, Kitchen, Utility and Cloakroom, First Floor Landing with 3 Bedrooms and large Bathroom. EPC-D. No Onward Chain.



Henley Road is a popular residential area within an easy walk of Ludlow's historic town core which offers a good range of facilities and is renowned for its architecture culture and festivals.

Spacious Reception Hall

With attractive patterned quarry tiles and door into useful pantry cupboard with extensive shelving.

Dining Room

Has feature fireplace with exposed brickwork, flagstone hearth and woodburning stove. Double opening doors into

Rear Conservatory

Being of upvc construction with double glazed roof, tiled flooring and double doors out onto the garden.

Living Room

Has bay window to front elevation, feature chimney breast with attractive fire surround and flame effect gas fire fitted.



Kitchen

Having window to rear elevation with further double glazed roof window, tiled flooring, range of matching units with wood styled fronts, heat resistant work surfaces, stainless steel sink unit. Electric hob with extractor positioned above and electric oven below.

Utility Room

Having window and door to rear garden, large lantern window in the ceiling, tiled floor matching that of the kitchen, range of base cupboards, wall cupboards, heat resistant work surfaces, tiled splashbacks, stainless steel sink unit, planned space and plumbing for dishwasher, washing machine and room for fridge freezer.

Cloakroom

Having suite in white of wc and wash hand basin

First Floor Landing

With window to side, access to roof space with drop down ladder.

Bedroom 1

Having large bay window to front elevation, across one wall is an excellent range of fitted wardrobe cupboards with hanging rail and shelves.

Bedroom 2

Having window overlooking rear garden, pretty tiled fireplace and wardrobe cupboard to side

Bedroom 3

Has window to frontage

Bathroom

Having window to rear elevation, modern suite in white that includes pedestal wash hand basin, wc, panelled corner bath and separate shower cubicle with multi head shower fitted.



Outside

The property is approached onto a tarmac frontage which provide parking for 4 cars, there is a low brick wall to front elevation and raised flowering borders to either side of the driveway. An electrically operated up and over door opens into the properties integral garage having concrete floor, and housed in here is the Worcester wall mounted gas fired boiler which heats domestic hot water and radiators. The rear garden with the property is enclosed by high board fencing to both side and rear elevation aiding privacy, right across the rear of the house is a paved seating area. Two steps then lead up onto the main part of the garden which is laid to lawn and is accessed under an archway with climbing plants. At the top of the garden there is then a further paved seating area sitting under a pergola again with climbing plants and shrubs and a good sized garden shed.



Services

Mains electricity, mains water, mains drainage and mains gas, gas fired heating to radiators, together with a woodburning stove in the Reception Room, windows are upvc double glazed, Broadband speeds: Basic 16 Mbps, Superfast 80 Mbps, Ultrafast 1000 Mbps, Flood Risk-Very Low.

Tenure

The property is Freehold

Local Authority

Shropshire Council - Tax Band C

Viewings

Contact the Ludlow Office on Tel: 01584 875207 or Craven Arms Office 01588 672728

Or you can email us at ludlow@samuelwood.co.uk or visit our web site at www.samuelwood.co.uk

For out of office enquiries please phone Andrew Cadwallader on 07974 015764

Referrals

Samuel Wood routinely refers vendors and purchasers to providers of conveyancing and financial services. We may receive fees from them as declared in our Referral Fees Disclosure Form.



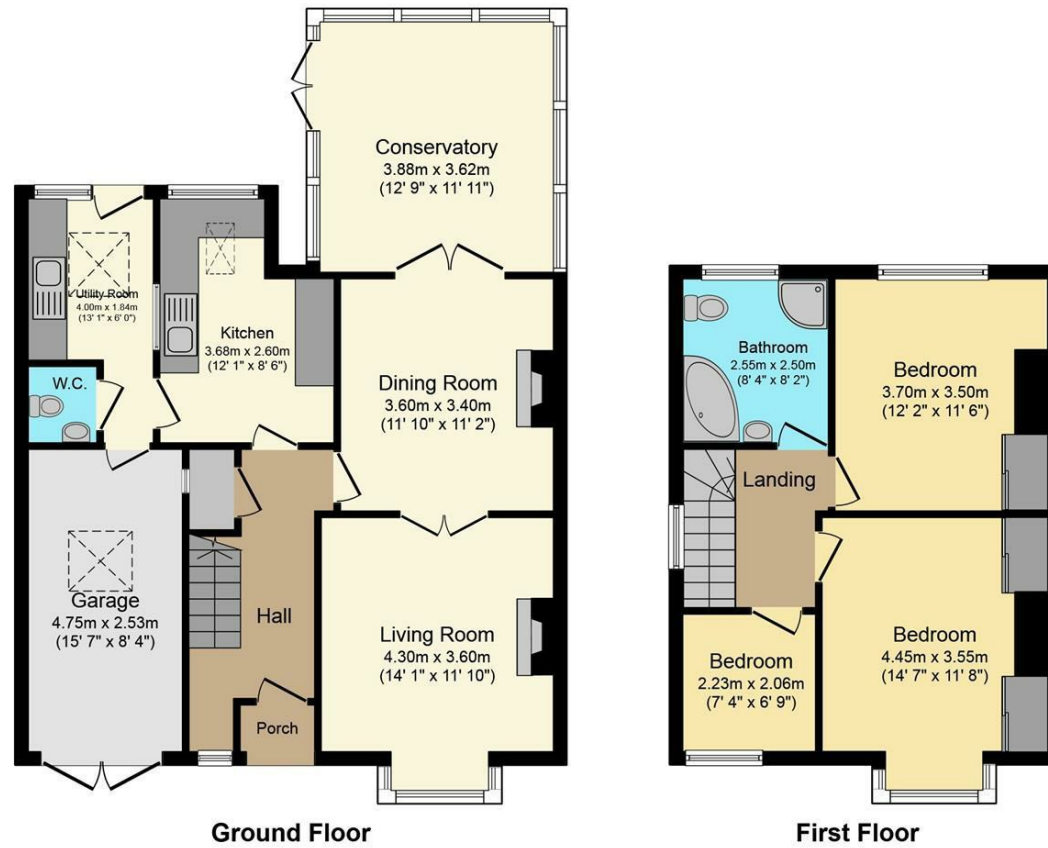
Directions







Floor Plans



This Floor Plan is for illustration purposes only and may not be representative of the property. The position and size of doors, windows and other features are approximate. Unauthorized reproduction prohibited. © PropertyBOX

We take every care in preparing our sales details. They are checked and usually verified by the Vendor. We do not guarantee appliances, alarms, electrical fittings, plumbing, showers etc. You must satisfy yourself that they operate correctly. Room sizes are approximate; they are usually taken in metric and converted to imperial. Do not use them to buy carpets or furniture. We cannot verify the tenure, as we do not have access to the legal title; we cannot guarantee boundaries or rights of way so you must take the advice of your legal representative. No person in the employment of or representing Samuel Wood has any authority to make any representation or warranty whatever in relation to this property. If there is any point which is of particular importance to you, please contact the office and we will be pleased to check the information. Do so particularly if contemplating travelling some distance to view. Applicants are advised that the majority of our shots are taken with a wide angle lens.

CONTEMPORARY AGENCY • TRADITIONAL VALUES

Tamberlaine House, The Buttercross, Ludlow, Shropshire, SY8 1AW

Tel: 01584 875207 | ludlow@samuelwood.co.uk