

Ongar Road,  
West Brompton, London, SW6

 LAWSONRUTTER

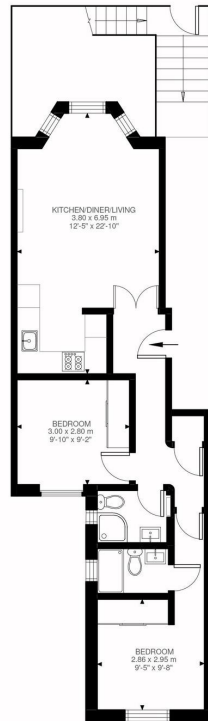




# Ongar Road

West Brompton, London, SW6

Price Guide: £599,950



Raised Ground Floor  
607 ft²

Ongar Road, SW6  
Approximate Gross Internal Area  
56.43 SQ.M / 607 SQ.FT

A stunning recently refurbished two double bedroom, two bathroom raised ground floor period conversion flat, finished to a high specification finish, located on a popular residential road within a short walk to West Brompton & Earls Court underground stations. The accommodation benefits from a Banham intercom system and comprises a fabulous open plan living room with herringbone flooring and period marble fireplace, a stylish fully fitted kitchen with Siemens appliances, two generous double bedrooms (one with en-suite bathroom) and a separate family bathroom offering a touch of luxury. Further benefits include excellent storage throughout. This is the perfect flat for both first time buyers and investors. Ongar Road is located moments from a variety of boutique shops and restaurants, as well as offering easy access to the A4/M4 and Central London and The West End. 999 year lease & No onward chain. PLEASE NOTE THESE PHOTOS ARE INDICATIVE OF THE WHOLE BUILDING AND DO NOT NECESSARILY REPRESENT THIS INDIVIDUAL PROPERTY.

Stunning, recently refurbished two double bedroom, two bathroom raised ground floor period conversion flat

Popular road | Open plan living room with herringbone flooring | Stylish fully fitted kitchen

Excellent storage throughout | Moments from boutique shops & restaurants | No onward chain

Close to transport & numerous amenities | 607 Sq. Ft. (56.43 Sq. M.) 999 year lease

All viewings by appointment through our **Hammersmith Office**:

T: 020 7385 7000  
E: [hammersmith@lawsonrutter.com](mailto:hammersmith@lawsonrutter.com)

192 Fulham Palace Road, London W6 9PA

In accordance with the Property Misdescription Act 1991, we wish to emphasise that the information given in these particulars is intended to help you decide whether you wish to view this property. Whilst every care is taken to ensure the accuracy of these particulars please note that all measurements are approximate and we are, for the accuracy of other information, reliant on what the seller has provided. We strongly recommend that you rely on your own inspections and those of your advisors to establish the details of any aspects which are of particular importance. Please note that we have not undertaken any survey of the property or the appliances within it and the buyer must rely on their own investigations prior to exchange of contracts.

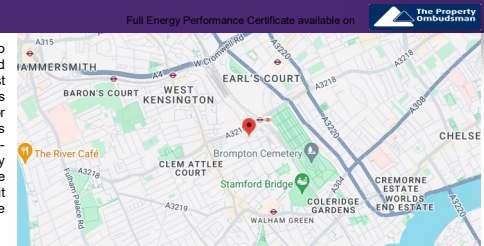


Illustration for identification purposes only. Not to scale. Floor Plan Drawn According To RICS Guidelines.

