

Ackmar Road, SW6

Fulham, London

 LAWSONRUTTER



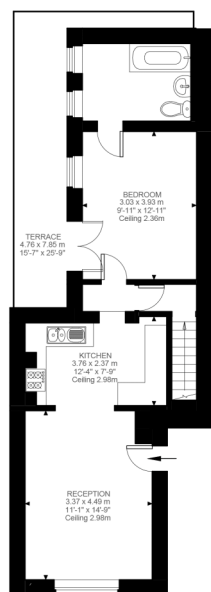


Ackmar Road £2,650,00 pcm London SW6

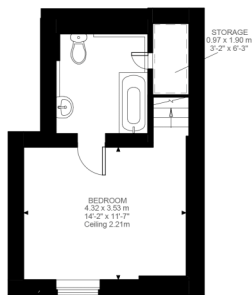
A large and spacious two double bedroom, two en-suite bathroom flat, less than five minutes' walk to Parsons Green underground station (District Line). Besides the large, equal size bedrooms, this split level flat also comprises a reception room, a fully fitted kitchen including dishwasher and a patio garden.

Ackmar Road is stone's throw from the excellent amenities of Parsons Green including Little Waitrose, The White Horse gastro pub and 'The Green', so early viewing of this great property is highly recommended. Available now, part furnished.

Council Tax 2021/22: BAND F (London Borough of Hammersmith & Fulham)
EPC Rating: Band D



Ground Floor
516 ft²



Lower Ground Floor
286 ft²

Ackmar Road, SW6
Approximate Gross Internal Area
74.59 SQ.M / 803 SQ.FT
(INCLUDING STORAGE)
STORAGE: 2.04 SQ.M / 22 SQ.FT
EXCLUSIVE TOTAL AREA 72.55 SQ.M / 781 SQ.FT

KEY: CH = Ceiling Height
[Restricted Head Height]

Illustration for identification purposes only. Not to scale.
Floor Plan Drawn According To RICS Guidelines.

All viewings by appointment through our
Fulham Office:

T: 020 7731 3636

E: fulham@lawsonrutter.com

347 Fulham Palace Road, London
SW6 6TB

In accordance with the Property Misdescription Act 1991, we wish to emphasise that the information given in these particulars is intended to help you decide whether you wish to view this property. Whilst every care is taken to ensure the accuracy of these particulars please note that all measurements are approximate and we are, for the accuracy of other information, reliant on what the seller has provided. We strongly recommend that you rely on your own inspections and those of your advisors to establish the details of any aspects which are of particular importance. Please note that we have not undertaken any survey of the property or the appliances within it and the buyer must rely on their own

