

Bishops Mansions, SW6

Fulham, London

 LAWSONRUTTER





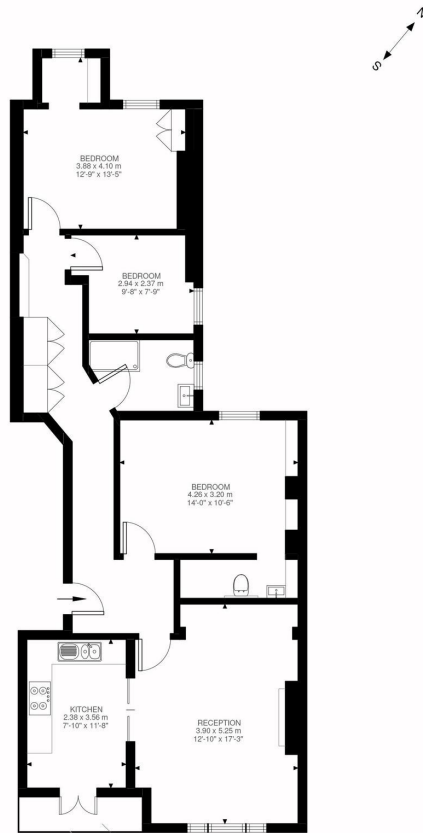
Bishops Mansions

£900,000

London SW6

Share of Freehold

Located in the last block near Bishops Park and over looking the bowling green, is this well presented larger than average second floor three bedroom apartment, in this highly favoured mansion development. Offering 87.11 SQ.M / 938 SQ.FT of living space, this light and airy property comprises a semi open plan kitchen reception room, which opens on to a delightful balcony, a principle bedroom with an ensuite W/C and basin, two further bedrooms and a modern shower room. The property also has access to the very well maintained communal gardens and also comes with a storage shed too. Bishops Mansions is ideally located for the shops, bars and restaurants on the Fulham Palace and Fulham Roads and is walking distance to Putney Bridge Underground Station (District Line) and the excellent bus links to Hammersmith, The West End and Putney on the Fulham Palace Road. Offered with a share of freehold and no onward chain, this fabulous flat must be seen.



Bishops Mansions, SW6
Approximate Gross Internal Area
87.11 SQ.M / 938 SQ.FT

Illustration for identification purposes only. Not to scale.
Floor Plan Drawn According To RICS Guidelines.

* A LARGER THAN AVERAGE SECOND FLOOR MANSION APARTMENT *

* (87.11 SQ.M / 938 SQ.FT) *

* PRINCIPLE BEDROOM & ENSUITE W/C AND BASIN * TWO FURTHER BEDROOMS *

* SEMI OPEN PLAN KITCHEN RECEPTION ROOM * SHOWER ROOM *

* WELL MAINTAINED COMMUNAL GARDENS *

* CLOSE TO LOCAL TRANSPORT AND AMENITIES *

* WALKING DISTANCE TO PUTNEY BRIDGE UNDERGROUND STATION (DISTRICT LINE) *

* SHARE OF FREEHOLD * NO ONWARD CHAIN *

All viewings by appointment through our
Fulham Office:

T: 020 7731 3636

E: fulham@lawsonrutter.com

347 Fulham Palace Road, London
SW6 6TB

In accordance with the Property Misdescription Act 1991, we wish to emphasise that the information given in these particulars is intended to help you decide whether you wish to view this property. Whilst every care is taken to ensure the accuracy of these particulars please note that all measurements are approximate and we are, for the accuracy of other information, reliant on what the seller has provided. We strongly recommend that you rely on your own inspections and those of your advisors to establish the details of any aspects which are of particular importance. Please note that we have not undertaken any survey of the property or the appliances within it and the buyer must rely on their own

