

Stevenage Road

Fulham, London, SW6





Stevenage Road, Fulham, London, SW6





Stevenage Road Fulham, London, SW6

A very rare opportunity to acquire a fabulous and substantial seven bedroom, four bathroom family residence, located between Doneraile and Ellerby Streets, overlooking Bishops Park and with enviable views of the river and the Wetlands conservation area beyond from two of the top floor bedrooms. The well balanced accommodation has been carefully designed and planned, by our clients, to offer the modern family the perfect and practical living environment and will more than satisfy their exacting standards.

The accommodation comprises on the ground floor, a wonderful west facing reception room, a guest WC, a boot, coat and pram cupboard and a very generous kitchen family room with all the usual refinements, including a larder, with double French doors that open onto a wonderful landscaped garden.

The larger than average basement has a spacious bedroom with an en-suite shower room, a dressing room and French doors that open onto a light well. There is an impressive cinema and games room with sliding doors that open onto a stairwell leading up to the garden, a wine cellar, a large storage room and a fully fitted laundry room, with a laundry shoot that is connected to all the floors in the house.

On the first floor, there is a principle bedroom, a great sized bathroom and dressing room, a further bedroom and a superb home office with French doors that open on to balcony.

The top floor comprises a guest bedroom and an en-suite bathroom, three further bedrooms and a shower room. Stairs lead up to an amazing roof terrace, with incredible views of Central London and its many iconic landmarks, such as the Shard, the City of London and Wembley Stadium on a clear day.

This part of Stevenage Road is a stone's throw to Bishops Park, the Thames Path and the tennis courts, as well as the Nuffield health club and the excellent local amenities and bus links on the Fulham Palace Road. Putney Bridge underground station (District Line), is also within walking distance and with no onward chain, early viewing of this magnificent property is highly recommended.



* A FABULOUS FAMILY RESIDENCE
OVERLOOKING BISHOPS PARK *
* SEVEN BEDROOMS * FOUR BATHROOMS *
* RECEPTION ROOM * KITCHEN FAMILY ROOM *
* CINEMA & GAMES ROOM * WINE CELLAR * ROOF TERRACE *
* BALCONY * FREEHOLD *

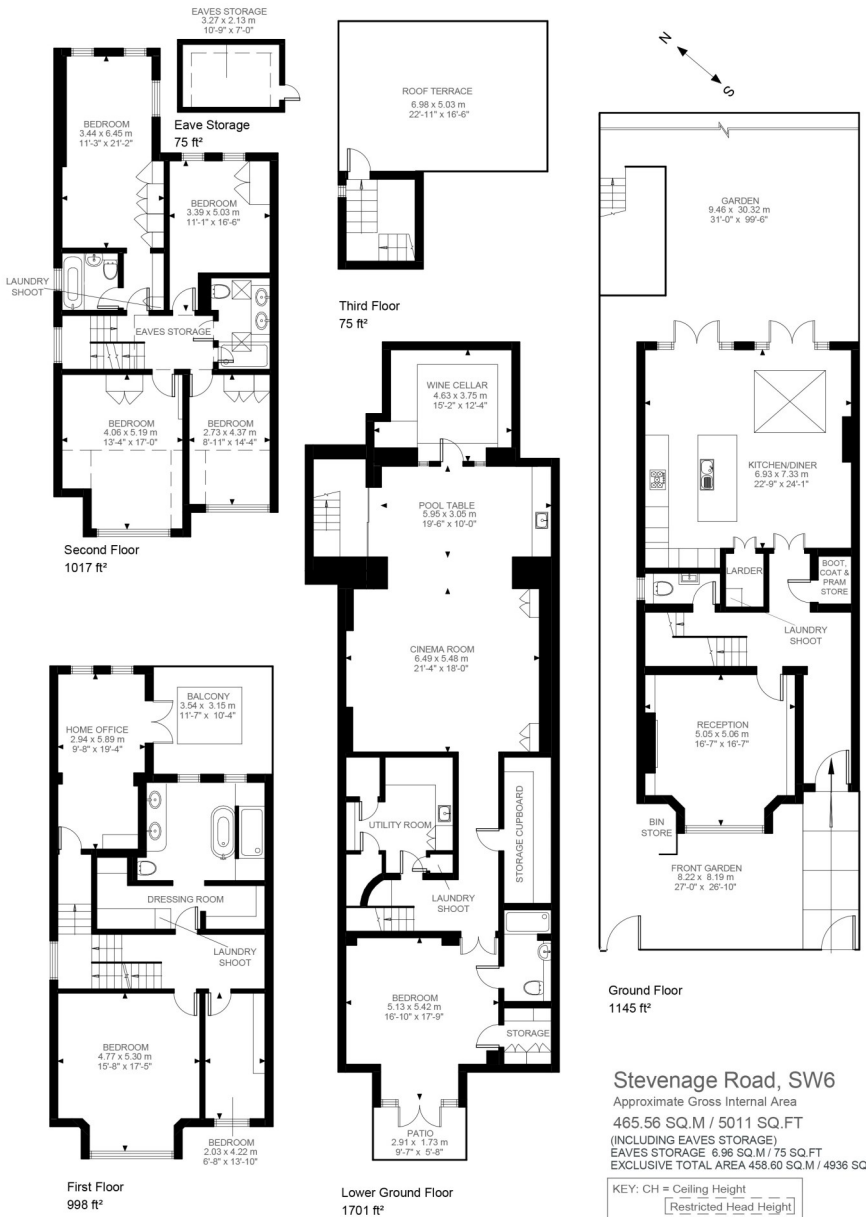


Illustration for identification purposes only. Not to scale.
Floor Plan Drawn According To RICS Guidelines.



Stevenage Road Fulham, London, SW6

Price Guide: £6,000,000.00

All viewings by appointment through
our **Fulham Office**:

T: 020 77313636
E: Fulham@lawsonrutter.com

347 Fulham Palace Road, London
SW6 6TB

www.lawsonrutter.com

In accordance with the Property Misdescription Act 1991, we wish to emphasise that the information given in these particulars is intended to help you decide whether you wish to view this property. Whilst every care is taken to ensure the accuracy of these particulars please note that all measurements are approximate and we are, for the accuracy of other information, reliant on what the seller has provided. We strongly recommend that you rely on your own inspections and those of your advisors to establish the details of any aspects which are of particular importance. Please note that we have not undertaken any survey of the property or the appliances within it and the buyer must rely on their own investigations prior to exchange of contracts.

