

# Crucible Homes



Webster Crescent  
Rotherham, S61 2BS

£280,000



## Overview

Four bedrooms

Semi detached

Utility room

Garden with bar

Private driveway

Close to M1



## Description

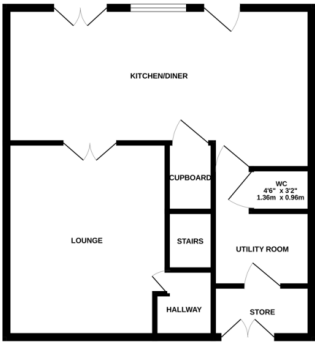
**SUMMARY ACCOMMODATION** Space for everyone ... imagine a home where there is space for everyone to spread out, inside and out. This lovely four bedroom home has just that, with lots of living space, a lovely garden with a home bar, and lose to everything you need, its a truly unique find.

Accommodation in brief comprises: entrance hall, lounge, open plan dining area and spacious kitchen leading to doorway to utility room and downstairs w.c., first floor landing, four good size bedrooms and family bathroom.

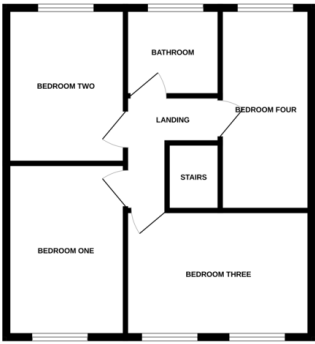
Outside the property has a private driveway which gives access to the storage garage, to the rear is a raised decking area for seating, lawned garden, further seating area and the added bonus of a garden bar.



GROUND FLOOR



1ST FLOOR



Whilst every attempt has been made to ensure the accuracy of the floorplan contained here, measurements of doors, windows, rooms and any other items are approximate and no responsibility is taken for any error, omission or mis-statement. This plan is for guidance purposes only and should be used as such by any prospective purchaser. The services, systems and appliances shown here are not been tested and no guarantee as to their operability or efficiency can be given.  
Made with Hozon 02023

