

Crucible

Homes



Green Lane Works
Sheffield, S3 8DX

Guide Price
£220,000

Overview

In the heart of Kelham Island

Apartment

Modern living

One bedroom

Allocated parking

Close to city centre



Description

SUMMARY ACCOMMODATION Modern living awaits you ... Guide Price £220,000-£230,000 ... your urban oasis awaits. This stylish one bedroom apartment is in the heart of the vibrant Kelham Island, just steps away from vibrant cafe's and bars offering you the lifestyle you have been looking for.

SUMMARY ACCOMMODATION Modern living awaits you ... Guide Price £220,000-£230,000 ... your urban oasis awaits. This stylish one bedroom apartment is in the heart of the vibrant Kelham Island, just steps away from vibrant cafe's and bars offering you the lifestyle you have been looking for.

Accommodation in brief comprises: communal entrance hallway, stairs to first floor apartment, internal private hallway, open plan living area with dining area, kitchen and step up to lounge area. the apartment boasts a good size master bedroom and bathroom.

Outside the property has private allocated parking in the courtyard area.

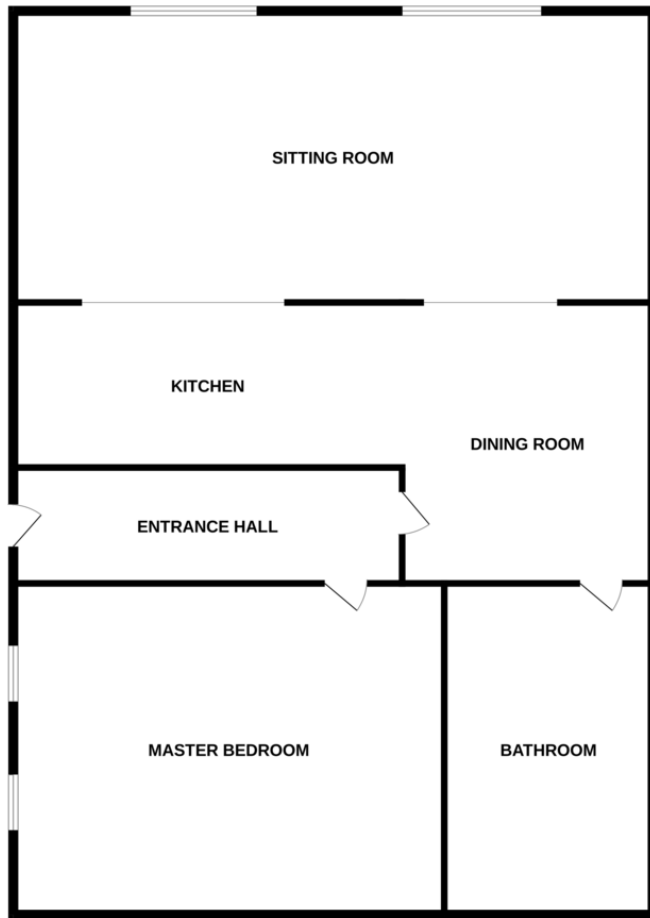
The property is in the heart of Kelham Island offering a fantastic vibrant lifestyle, with cafe's, bars and eateries all within walking distance. Sheffield City Centre is just a few minutes from the property.

LOUNGE 14' 4" x 13' 8" (4.39m x 4.17m)

DINING AREA 12' 1" x 11' 1" (3.7m x 3.4m)



GROUND FLOOR



Score	Energy rating	Current	Potential
92+	A		
81-91	B	81 B	81 B
69-80	C		
55-68	D		
39-54	E		
21-38	F		
1-20	G		

KITCHEN 10' 4" x 7' 2" (3.17m x 2.19m)

MASTER BEDROOM 17' 8" x 11' 1" (5.4m x 3.4m)

BATHROOM 10' 5" x 6' 2" (3.2m x 1.89m)

