

# Crucible

Homes



Halesworth Road  
Sheffield, S13 9AA

£120,000



## Overview

Three bedrooms

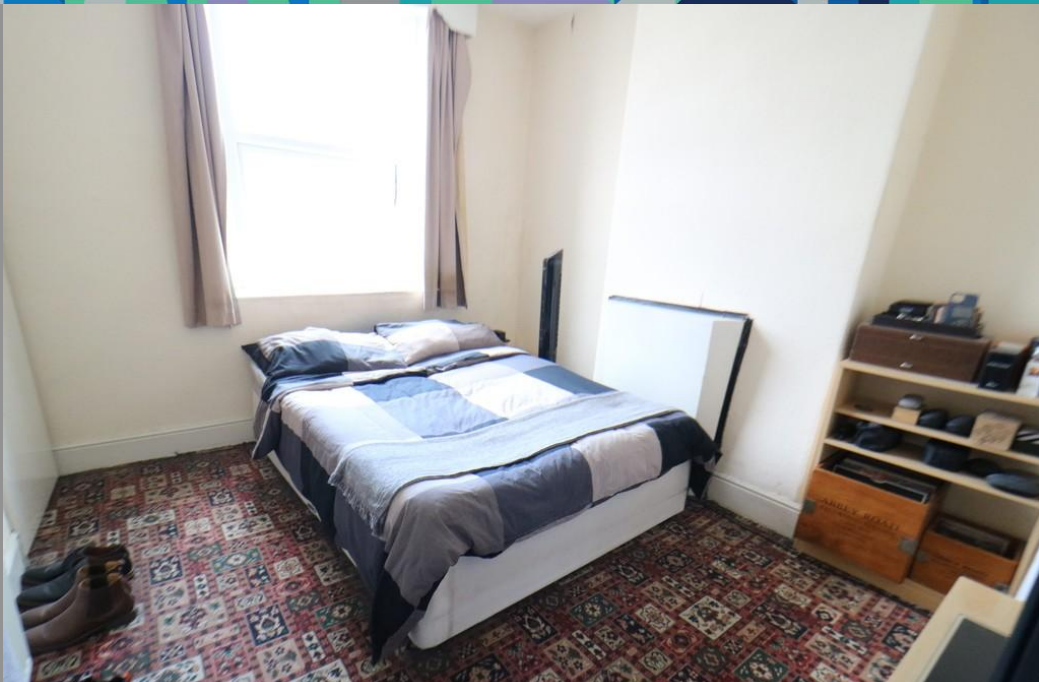
Set over four floors

Lots of potential

Close to M1

Lower ground floor rooms

Perfect project



## Description

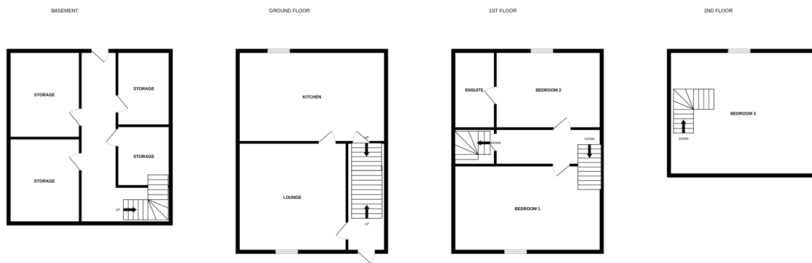
**SUMMARY ACCOMMODATION** Accommodation in brief comprises: entrance hall, lounge, kitchen with stairs to lower ground floor, lower ground floor with four storage/multi purpose rooms and access to rear garden.

First floor landing with access to two bedrooms with en suite shower room off bedroom two, stairs to attic bedroom three.

Outside the property has a yard to the front, to the rear is a yard and garden area.

The property is ideally located for commuting with the M1 motorway easily accessible, there are also a host of amenities and transport links close by.





Whilst every attempt has been made to ensure the accuracy of the floorplan contained here, measurements of doors, windows, doors and any other items are approximate and no responsibility is taken for any error, omission or mis-statement. This plan is for illustrative purposes only and should be used as such by any prospective purchaser. The services, systems and appliances shown have not been tested and no guarantee as to their operability or efficiency can be given.  
Made with Herington 12/2023

