

Crucible Homes



Ingleborough Croft
Sheffield, S35 2ZX

Guide Price
£320,000

Overview

Four bedrooms

Fantastic open plan living

Modern

Outside bar/summer house

Close to schools

M1 nearby



Description

SUMMARY ACCOMMODATION Accommodation in brief comprises: entrance porch, lounge with open plan access to modern kitchen area and dining area, with kitchen area boasting a central island, access from dining area to ground floor w.c. and utility room.

Bedroom four is located on the ground floor, first floor landing with access to three further bedrooms and family bathroom. Outside the property has a private driveway to the front with parking for multiple cars, to the rear is a fantastic private garden with raised decking area's for seating , steps down lead to an artificial lawned garden and access to the fantastic bar/summerhouse.

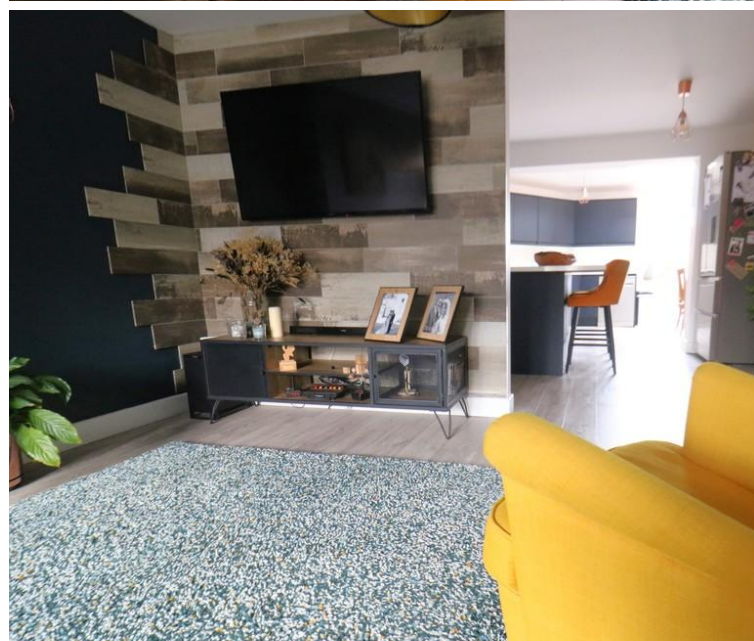
The property is located on this popular estate with local schools within walking distance, the amenities of both Chapeltown and Bumcross are also close by. Local countryside, woodland and parks are close by and the M1 motorway is just a few minutes drive away making it ideal for commuting.

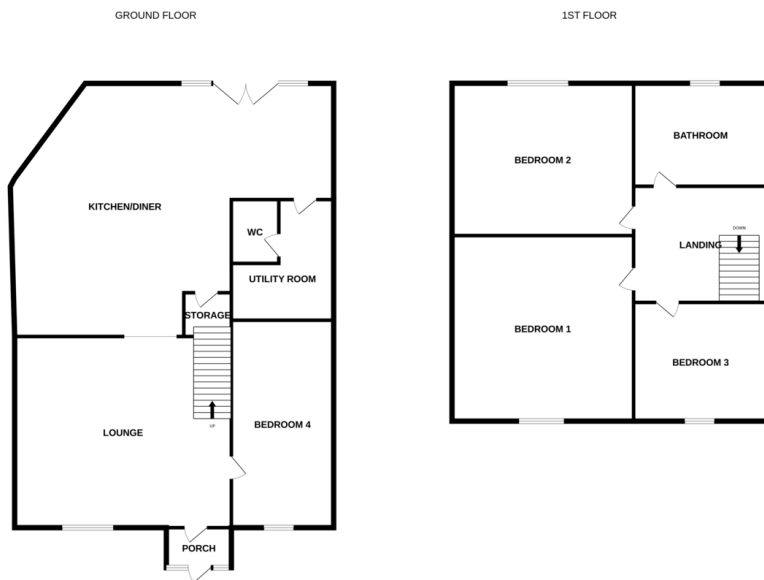
LOUNGE 15' 3" x 14' 2" (4.67m x 4.33m)

KITCHEN/DINER 19' 7" x 19' 2" (5.99m x 5.85m)

UTILITY ROOM 9' 3" x 5' 6" (2.83m x 1.7m)

BEDROOM ONE 18' 6" x 10' 0" (5.64m x 3.06m)





Whilst every attempt has been made to ensure the accuracy of the floorplans contained herein, measurements of doors, windows, rooms and any other items are approximate and no responsibility is taken for any error, omission or mis-statement. This plan is for illustrative purposes only and should be used as such by any prospective purchaser. The services, systems and appliances shown have not been tested and no guarantee as to their operability or efficiency can be given.
Made with Hesign (2023)

BEDROOM TWO 10' 0" x 7' 10" (3.05m x 2.4m)

BEDROOM THREE 13' 7" x 7' 10" (4.16m x 2.41m)

BEDROOM FOUR 9' 3" x 5' 6" (2.84m x 1.68m)

