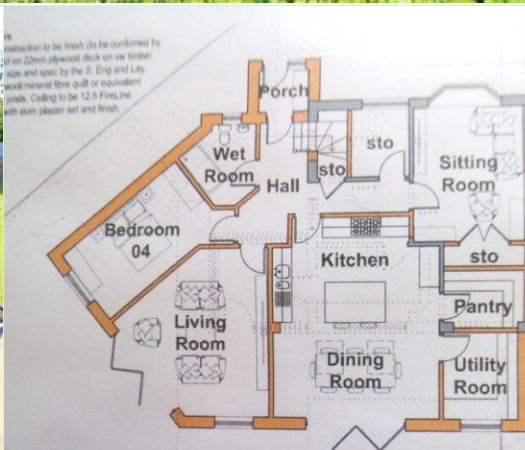


Crucible Homes



Drake Close
Sheffield, S35 1TB

Guide Price
£275,000

Overview

- Three bedrooms
- Fantastic size plot
- Planning permission
- Detached garage
- Cul de sac location
- No onward chain



Description

SUMMARY ACCOMMODATION Make it all yours ... Guide Price £275,000-£300,000 ... opportunities like this do not come along often, with planning permission already granted for this lovely three bedroom semi detached home sitting on a fantastic size plot gives you chance to let your imagination go wild.

Accommodation in brief comprises: entrance hallway, entrance hall, open plan lounge/diner, kitchen, conservatory enjoying views over the large plot, ground floor bathroom, first floor landing with storage cupboards, three bedrooms. Outside the property has a large driveway providing access to the detached garage which benefits from a new pitched roof and has electric supply and electric garage door. To the front of the house is a garden area with mature plants. To the side and the rear of the property is a fantastic size garden with patio area's for seating, and a garden area that offers lots of potential. the garden also benefits from new fencing for privacy.

The property is located in the heart of Burncross village with a host of amenities and transport links close by, local schools are also within walking distance. Local woodland, parkland and countryside are also close by.



