

# Crucible Homes



Jenkin Road  
S9 1AZ, S9 1AZ

Guide Price  
£190,000

## Overview

- Spacious family home
- Three double bedrooms
- Close to local amenities
- Garage and off road parking
- Great transport links
- Close to M1 and Meadowhall



## Description

SUMMARY DESCRIPTION GUIDE PRICE £190,000-£200,000

We welcome to the market a beautiful three bedroom detached home located in Wincobank, Sheffield.

The accomodation briefly comprises; entrance hallway, spacious living room, kitchen/diner, three bedrooms and a bathroom. To the front of the home is a driveway and garage providing off road parking for multiple vehicles, and to the rear is an enclosed low maintenance garden, with perimeter fencing for additional privacy and security.

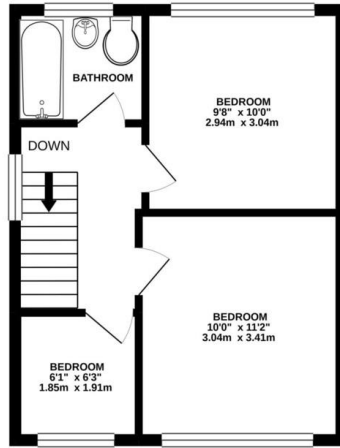
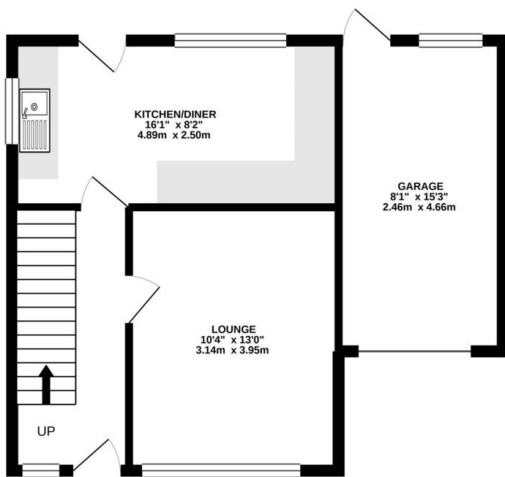
Ideally located for easy commuting into Sheffield or Rotherham, and within a 10 minute drive to the M1 motorway. The property is also situated near to Meadowhall and Centertainment, so there is plenty of amenities just a stones throw away. With many public transport links also, the tram and train running to Meadowhall gives plenty of options and flexibiity to the owners of this home.

This would make the perfect home for someone looking to expand their family and settle down. Please contact the office today for a viewing.



GROUND FLOOR  
463 sq.ft. (43.0 sq.m.) approx.

1ST FLOOR  
339 sq.ft. (31.5 sq.m.) approx.



TOTAL FLOOR AREA: 802 sq.ft. (74.5 sq.m.) approx.

Whilst every attempt has been made to ensure the accuracy of the floorplan contained here, measurements of doors, windows, rooms and any other items are approximate and no responsibility is taken for any error, omission or mis-statement. This plan is for illustrative purposes only and should be used as such by any prospective purchaser. The services, systems and appliances shown have not been tested and no guarantee as to their operability or efficiency can be given.  
Made with Metropix ©2021

Score	Energy rating	Current	Potential
92+	A		
81-91	B		84 B
69-80	C	69 C	
55-68	D		
39-54	E		
21-38	F		
1-20	G		

