

Crucible Homes



Eagleton Drive
Sheffield, S35 4DS

Offers In Region Of
£260,000

Overview

Four bedrooms

Detached family home

No onward chain

Close to schools

M1 Nearby

Large plot



Description

Make it your own... This four bedroom family home, on the edge of countryside and within walking distance of local schools and the amenities of High Green village, it could be the perfect project to make your forever family home. With two reception rooms, a conservatory and sitting on a large plot, it has potential in abundance.

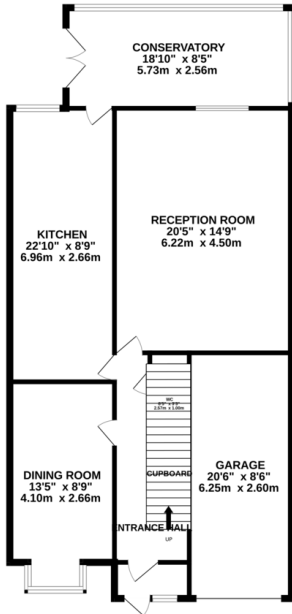
Accommodation in brief comprises: entrance hallway, spacious kitchen, lounge, dining room, conservatory, first floor landing, master bedroom with en suite bathroom, three further bedrooms and family bathroom.

Outside the property sits on a generous plot with gardens to three sides, a private driveway and access to the garage,

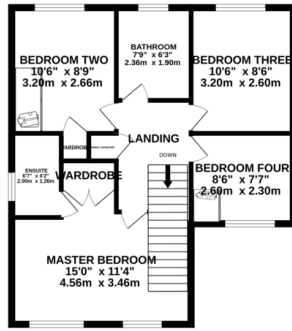
The property is in a convenient location with the M1 motorway just a few minute's drive away making it ideal for commuting. High Green village is within walking distance with a host of local amenities, local schools are also close by. The property also sits on the edge of local countryside including Westwood Country Park and Westwood Reservoir



GROUND FLOOR
1104 sq.ft. (102.6 sq.m.) approx.



1ST FLOOR
550 sq.ft. (51.1 sq.m.) approx.



TOTAL FLOOR AREA : 1653 sq.ft. (153.6 sq.m.) approx.

Whilst every attempt has been made to ensure the accuracy of the description contained here, measurements of doors, windows, stairs and any other items are approximate and no responsibility is taken for any error, omission or mis-statement. This plan is for illustrative purposes only and should be used as such by any prospective purchaser. The services, systems and appliances shown have not been tested and no guarantee as to their operability or efficiency can be given.
Made with Hesign C2024.

