

Crucible Homes



Solly Street
Sheffield, S1 4BZ

Asking Price Of
£95,000

Overview

No Chain

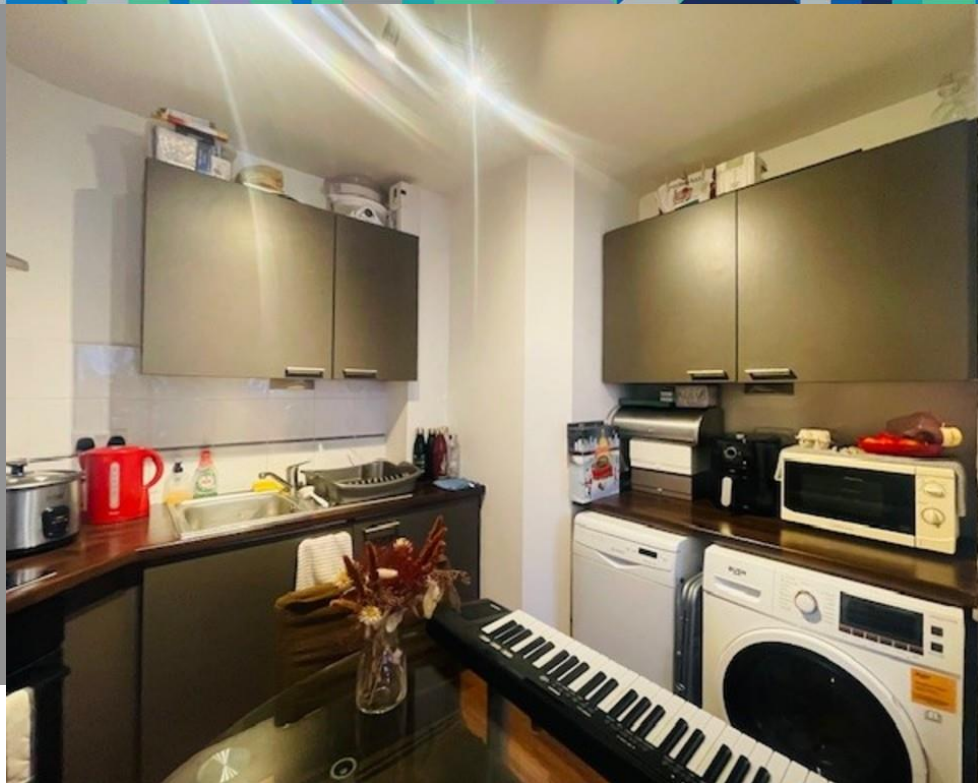
Selling With Tenants In Situ

Town Centre Location

Leasehold

Current Rent £595pcm

Council Tax Band - A



Description

SUMMARY * SELLING with TENANT IN SITU ***
GUIDE PRICE £95,000**

Selling with NO CHAIN is this ONE bedroom Apartment in the popular development of Solly Court.

The apartment benefits from open plan lounge / kitchen, so great for when you are entertaining guests.

Layout comprises of; entrance hallway, bathroom, bedroom, open plan lounge/kitchen which has having integral appliances including fridge/freezer, washer/dryer and dishwasher.

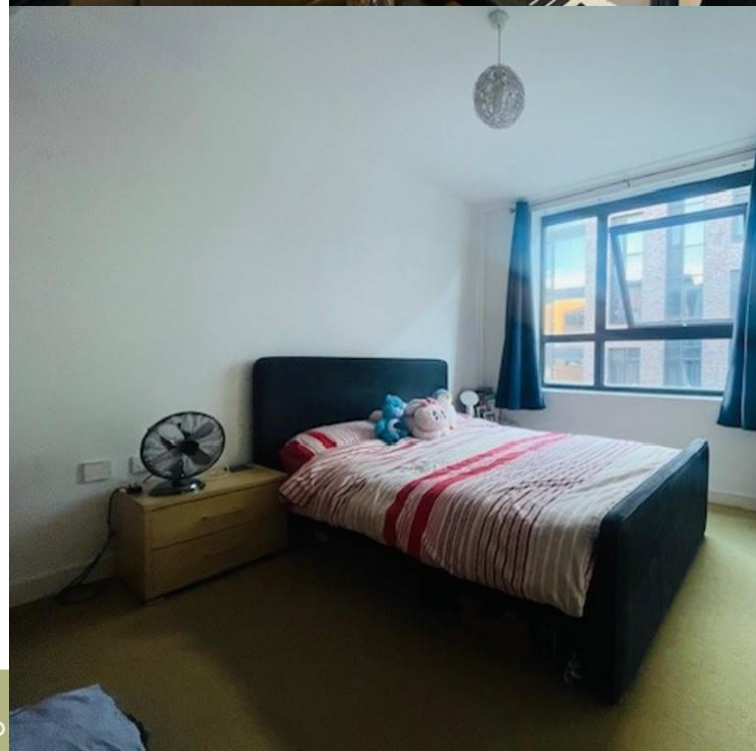
Further benefits of the apartment is location, great investment and furniture package which is included.

The apartment is in the heart of Sheffield, ideally placed close to Universities and excellent access to transport motorway links.

Current rental is £595pcm.

Lease details can be supplied on request.

AGENCY NOTE EPC Rating - C



Score	Energy rating	Current	Potential
92+	A		
81-91	B		88 B
69-80	C	80 C	
55-68	D		
39-54	E		
21-38	F		
1-20	G		

Council Tax Band - A

Tenure - Leasehold

