

# Crucible Homes



Worrall Road  
High Green, S35 3LN

Asking Price Of  
£165,000

## Overview

Three Bedrooms

Lounge / Diner

Utility Area

Large Rear Enclosed Garden

Ample Parking

Outside Entertainment Area



## Description

### SUMMARY

Crucible Homes are excited to be selling this SPACIOUS THREE bedroom semi-detached family home located in the popular location of HIGH GREEN.

Layout of the property comprises of; entrance hall, lounge/diner, kitchen, utility area and WC. To the first floor are three good sized bedrooms, two which are double and bathroom which consists of bath with shower over and wash hand basin.

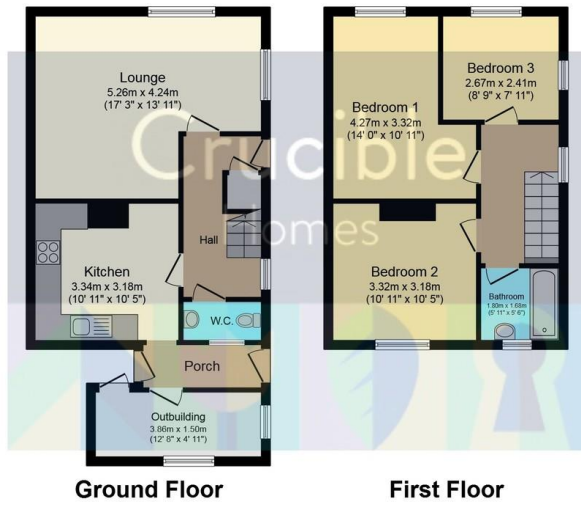
Externally there is a large enclosed mainly laid to lawn garden and for anyone that likes entertaining, the current owners has created an internal and external entertainment areas, including a bar area!

This property offers potential to extend to the side and rear, subject to planning permission creating a larger family home.

EPC Rating - D

Council Tax Band - A





Total floor area 88.2 m<sup>2</sup> (949 sq.ft.) approx  
 This plan is for illustration purposes only and may not be representative of the property. Plan not to scale. Powered by PropertyBox

