

Crucible Homes



Fircroft Avenue
Sheffield, S5 0SD

£155,000

Overview

NO CHAIN

Modern Breakfasting Kitchen

Modern Bathroom

Three Bedrooms

Spacious Lounge

Council Tax band - A



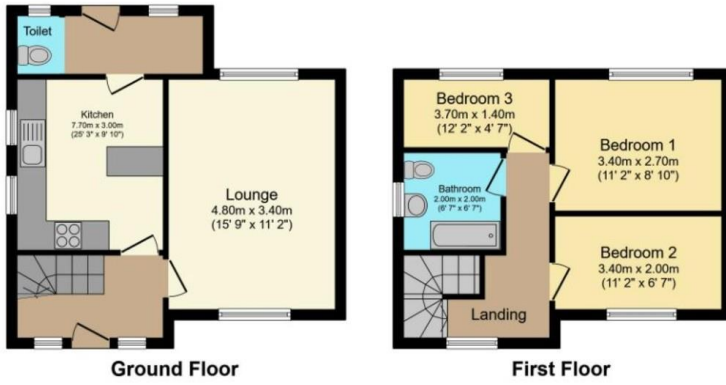
Description

SUMMARY ATTENTION buyers!! Crucible Homes are delighted to be selling this **THREE** bedroom semi detached property, placed within an ideal residential location for any commuter or families with children as the property is close to **FIRTH PARK Academy** and links to the **M1 motorway** network.

Internal layout comprises of entrance hall with stairs leading to the first floor, modern breakfasting kitchen with integrated appliances and lobby leading to the downstairs WC, spacious lounge with a feature electric fire and double aspect front and rear windows. To the first floor is a landing which leads to three good sized bedroom's and modern bathroom with a white three piece suite and fully tiled walls.

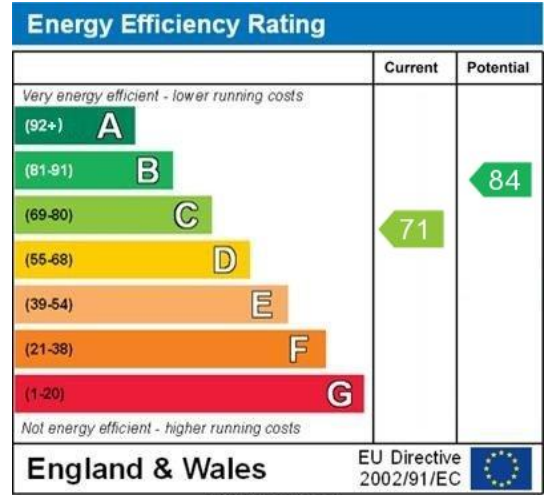
To the rear there is a good sized enclosed mainly laid to lawn garden which leads to a side patio area, with a timber store.





Total floor area 70.0 sq.m. (754 sq.ft.) approx

This floor plan is for illustrative purposes only. It is not drawn to scale. Any measurements, floor areas (including any total floor area), openings and orientation are approximate. No details are guaranteed, they cannot be relied upon for any purpose and they do not form part of any agreement. No liability is taken for any error, omission or misstatement. A party must rely upon its own inspection(s). Plan produced for Purplebricks. Powered by www.focalagent.com



WWW.EPC4U.COM

This property has been refurbished to a good standard, with a modern twist.

Great property for a first time buyer or investor.

Call Crucible Homes to arrange a viewings.

AGENCY NOTE

Council Tax Band - A

EPC Rating - C

Tenure - Freehold

