

# Crucible Homes



Owler Lane  
Sheffield, S4 8GA

Offers In Region Of  
£140,000



## Overview

NO CHAIN

LEASEHOLD - 672 Years

Council Tax Band A

Four Bedrooms

Great investment opportunity

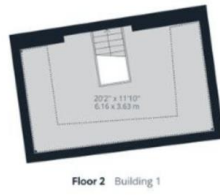
Close to a range of amenities



## Description

An internal inspection is essential to appreciate the size of this four bedroom end terrace property which is situated in this popular residential area with access to local amenities including schools, shops, Meadowhall complex, IKEA and transport links including the Motorway network. The property has gas central heating and double glazing and in brief comprises: a welcoming entrance hallway, a bay windowed lounge, separate dining room, second sitting room / bedroom, a fully fitted kitchen, a wet room, and a cellar. To the first floor three bedrooms and a separate toilet and a delightful bathroom. To the second floor a large room that could be used as another bedroom. The rear yard is fully enclosed.





Score	Energy rating	Current	Potential
92+	A		
81-91	B		
69-80	C		69   C
55-68	D		
39-54	E		
21-38	F	38   F	
1-20	G		

