

Crucible Homes



Owler Lane
Sheffield, S4 8GA

Offers In Excess Of
£155,000

Overview

NO CHAIN

LEASEHOLD - 672 Years

Council Tax Band A

Four Bedrooms

Great investment opportunity

Close to a range of amenities

Reputable primary and secondary schools nearby

Viewings by appointment ONLY.



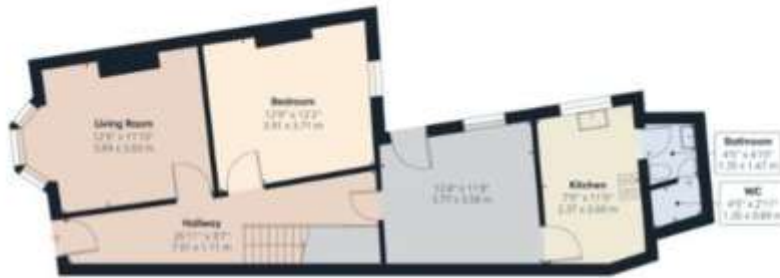
Description

**** NO CHAIN **** Offered to the market with **VACANT** possession is this four bedroom property in the popular residential area of S4.

An internal inspection is essential to appreciate the size of this four bedroom end terrace property which is situated in this popular residential area with access to local amenities including schools, shops, Meadowhall complex, IKEA and transport links including the Motorway network. The property has gas central heating and double glazing and in brief comprises: a welcoming entrance hallway, a bay windowed lounge, separate dining room, second sitting room / bedroom, a fully fitted kitchen, a wet room, and a cellar. To the first floor three bedrooms and a separate toilet and a delightful bathroom. To the second floor a large room that could be used as another bedroom. The rear yard is fully enclosed.



Score	Energy rating	Current	Potential
92+	A		
81-91	B		
69-80	C		69 C
55-68	D		
39-54	E		
21-38	F	38 F	
1-20	G		



Ground Floor Building 1



Floor 1 Building 1



Floor 2 Building 1

PRS
Property Redress Scheme



onTheMarket.com

rightmove
find your happy

Zoopla.co.uk
Smarter property search



Find us on Facebook **Crucible Sales & Lettings** Follow us on Twitter **@cruciblesalelet** Find us on Instagram **cruciblesalelet**