

for sale

offers in the region of **£155,000** Freehold



## Crownmeadow Drive Tipton DY4 0LE

Modern End Terrace located on a sought after development whilst offering the benefit of Upvc Double Glazing and Gas Central Heating.



# Crownmeadow Drive Tipton DY4 0LE

## Reception Hall

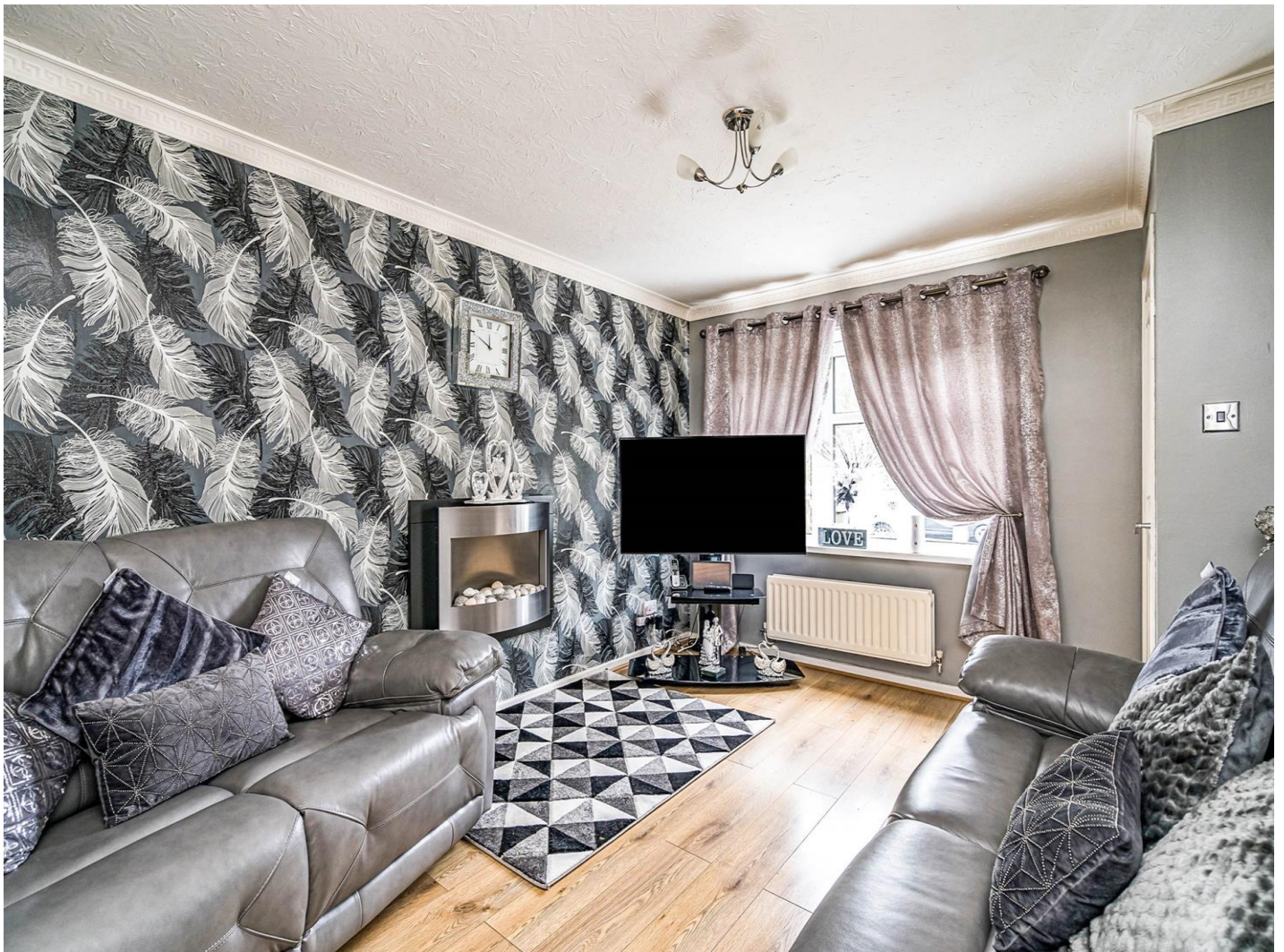
stairs off to first floor, upvc double glazed window

## Lounge

upvc double glazed window, radiator, feature flooring, under stairs storage cupboard

## Fitted Kitchen

2 upvc double glazed windows, door to rear garden, inset sink unit, fitted base and drawer cupboards, roll top working surfaces, tiled surrounds, built in oven. fitted hob, appliance space, wall cupboards, central heating boiler, radiator





## On The First Floor

### Landing

upvc double glazed window

### Bedroom One

upvc double glazed window, fitted wardrobes, built in store, radiator

### Bedroom Two

upvc double glazed window, radiator

### Family Bathroom

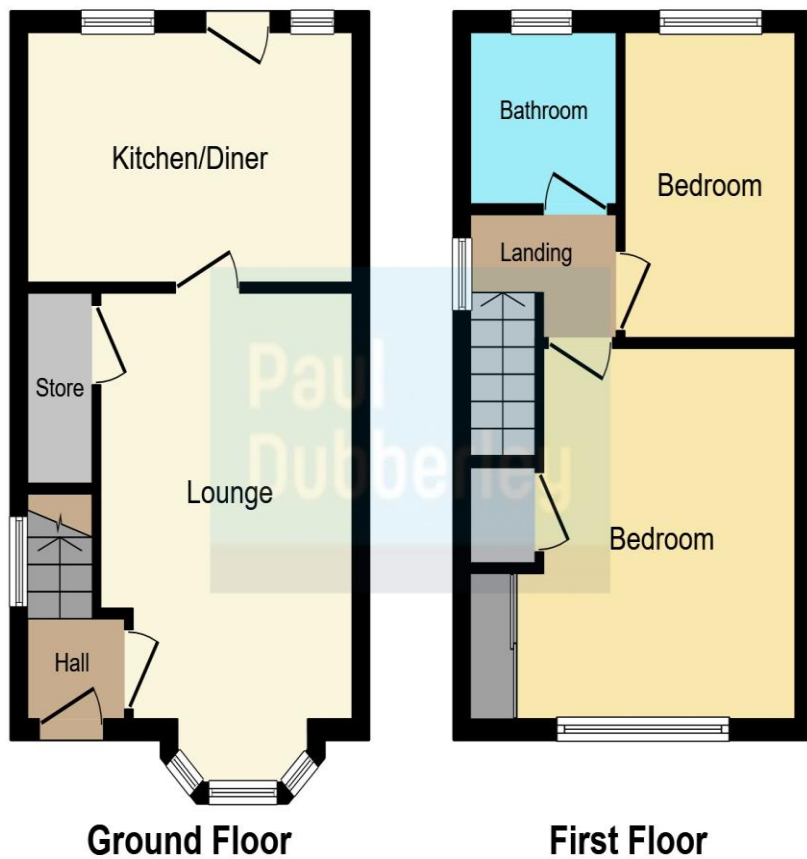
upvc double glazed window, panelled bath, wash hand basin, low level w.c. tiled surrounds

## Outside

To The Front: Side Driveway

To The Rear: Patio, Dwarf Wall, Steps Up, Lawn, Rear Terrace





This floorplan is for illustrative purposes only and is not drawn to scale. Measurements, floor-areas, openings and orientations are approximate. They should not be relied upon for any purpose and do not form any part of an agreement. No liability is taken for any error or mis-statement. All parties must rely on their own inspections.

To view this property please contact Paul Dubberley on

**T** 0121 522 3733  
**E** [greatbridge@pauldubberley.co.uk](mailto:greatbridge@pauldubberley.co.uk)

73 Great Bridge  
 TIPTON DY4 7HF

Property Ref: PTI102316 - 0003

**Tenure:** Freehold

**EPC Rating:** D

**check out more properties at [PaulDubberley.co.uk](http://PaulDubberley.co.uk)**



1. MONEY LAUNDERING REGULATIONS Intending purchasers will be asked to produce identification documentation at a later stage and we would ask for your co-operation in order that there will be no delay in agreeing the sale. 2. These particulars do not constitute part or all of an offer or contract. 3. The measurements indicated are supplied for guidance only and as such must be considered incorrect. Potential buyers are advised to recheck measurements before committing to any expense. 4. We have not tested any apparatus, equipment, fixtures, fittings or services and it is in the buyers interest to check the working condition of any appliances.

see all our properties at [www.pauldubberley.co.uk](http://www.pauldubberley.co.uk) | [www.rightmove.co.uk](http://www.rightmove.co.uk) | [www.zoopla.co.uk](http://www.zoopla.co.uk)