

for sale
£375,000 Freehold

**Paul
Dubberley**



Laura Roberts Close West Bromwich B70 0FJ

Laura Roberts Close West Bromwich B70 0FJ



Property Description

DO YOU HAVE A PROPERTY TO SELL?

We offer FREE selling valuations

DO YOU NEED A MORTGAGE?

Our fully qualified mortgage experts offer mortgage & remortgage advice

Entrance Hall

Having a double glazed door to the front elevation, stairs to the first floor and doors to.

Downstairs WC

Having a double glazed window to the front elevation, part tiled, low level WC, wash hand basin and central heating radiator.

Lounge

21' 2" x 10' 2" (6.45m x 3.10m)

Having a double glazed window to the front elevation, double doors to the kitchen/dining room, TV point, central heating radiator and wooden flooring.

Kitchen /Dining Room

13' 1" x 17' 3" (3.99m x 5.26m)

Having a double glazed window to the rear elevation, double glazed patio doors to the rear, fitted kitchen with a range of wall and base units, with worksurfaces over, stainless steel sink and drainer, integrated double oven, integrated hob, with cookerhood over, plumbing for washing machine, central heating radiator and spotlights to ceiling.

Landing

Having stairs from the entrance hall, double glazed window to the side elevation and doors to.

Bedroom One

17' 8" x 9' 5" (5.38m x 2.87m)

Having a double glazed window to the front elevation, central heating radiator and door to ensuite.

Ensuite

Having a double glazed window to the side elevation, part tiled, shower cubicle, low level WC, wash hand basin and central heating radiator.

Bedroom Two

9' 10" x 9' 10" (3.00m x 3.00m)

Having a double glazed window to the rear elevation and central heating radiator.

Bedroom Three

9' 10" x 6' 10" (3.00m x 2.08m)

Having a double glazed window to the rear elevation and central heating radiator.

Bedroom Four

7' 10" x 6' 10" (2.39m x 2.08m)

Having a double glazed window to the front elevation and central heating radiator.

Bathroom

Part tiled, bath with shower over, low level WC, wash hand basin and central heating radiator.

Front Garden

Having surrounding fence with shrubs and block paved parking to the side.

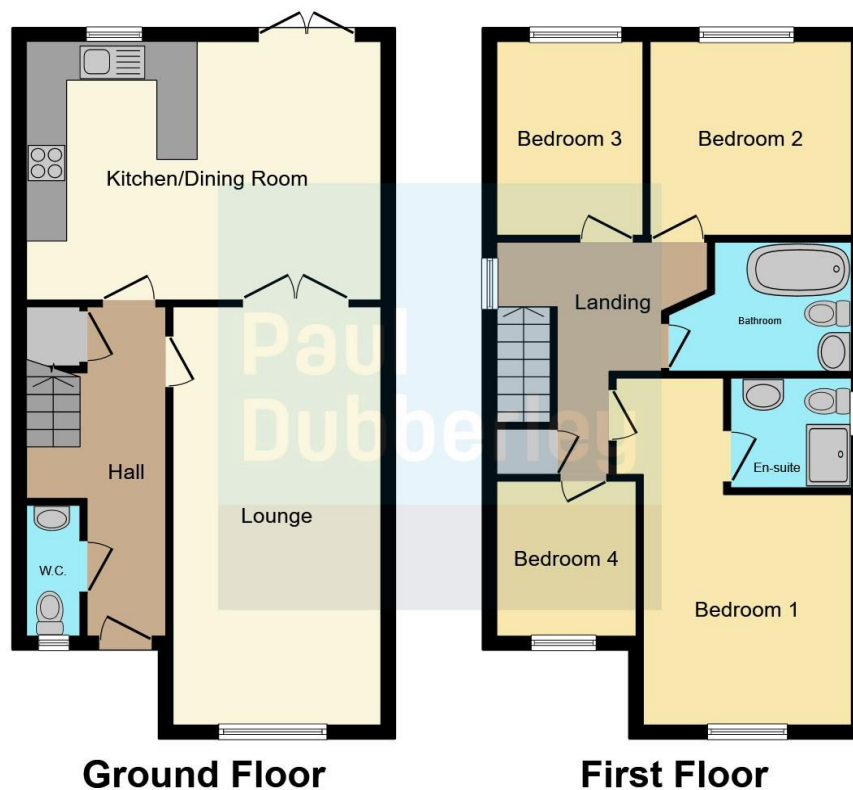
Rear Garden

Having patio area, steps leading down to a lawn area and shed.









This floor plan is for illustrative purposes only. It is not drawn to scale. Any measurements, floor areas (including any total floor area), openings and orientation are approximate. No details are guaranteed, they cannot be relied upon for any purpose and they do not form part of any agreement. No liability is taken for any error, omission or misstatement. A party must rely upon its own inspection(s). Powered by www.focalagent.com

To view this property please contact Paul Dubberley on

T 0121 525 2111
E westbromwich@pauldubberley.co.uk

290 - 292 High Street
 WEST BROMWICH B70 8EN

EPC Rating: B C/T Band D

view this property online PaulDubberley.co.uk/Property/PWB104384

1. MONEY LAUNDERING REGULATIONS Intending purchasers will be asked to produce identification documentation at a later stage and we would ask for your co-operation in order that there will be no delay in agreeing the sale. 2. These particulars do not constitute part or all of an offer or contract. 3. The measurements indicated are supplied for guidance only and as such must be considered incorrect. Potential buyers are advised to recheck measurements before committing to any expense. 4. We have not tested any apparatus, equipment, fixtures, fittings or services and it is in the buyers interest to check the working condition of any appliances.

Paul Dubberley is a trading name of Connells Residential which is registered in England and Wales under company number 1489613, Registered Office is Cumbria House, 16-20 Hockliffe Street, Leighton Buzzard, Bedfordshire, LU7 1GN. VAT Registration Number is 500 2481 05.

see all our properties at www.pauldubberley.co.uk | www.rightmove.co.uk | www.zoopla.co.uk

Property Ref: PWB104384 - 0002

