

for sale
£325,000 Freehold

**Paul
Dubberley**



The Pavilions West Bromwich B70 6BA

The Pavilions West Bromwich B70 6BA



Property Description

.....

Entrance Hall

Having a double glazed door to the front elevation, central heating radiator and wooden flooring.

Cloakroom

Tiled with low level WC, extractor fan, wash hand basin and central heating radiator.

Lounge

16' 2" into bay x 11' 7" max (4.93m into bay x 3.53m max)

A beautifully presented living room is fitted with a double glazed windows to the front elevation, central heating radiator, TV Point, Telephone point and same flooring continuing through from the entrance hall.

Kitchen

10' 4" x 14' 9" (3.15m x 4.50m)

Fitted kitchen with a range of wall and base units, with worksurfaces over, sink and drainer, tiling to splash prone areas, integrated fridge and freezer, electric oven and gas hob with cooker hood over, washing machine and dishwasher, central heating boiler and central heating radiator. Attached is the dining area with double glazed French doors leading out to the garden.

Landing

Having stairs from the entrance hall, storage cupboard, loft access, central heating radiator and doors to,

Bedroom One

12' 1" x 8' 4" (3.68m x 2.54m)

Having a double glazed window to the front elevation, built in wardrobes, central heating radiator and door to ensuite.

Ensuite

Having a double glazed window to the side elevation, part tile with shower cubicle, low level WC, vanity wash hand basin, shaver point, extractor fan and central heating radiator.

Bedroom Two

8' 4" x 10' 4" (2.54m x 3.15m)

Having a double glazed window to the rear elevation and central heating radiator.

Bedroom Three

6' 3" x 9' 2" (1.91m x 2.79m)

Having a double glazed window to the front elevation and central heating radiator.

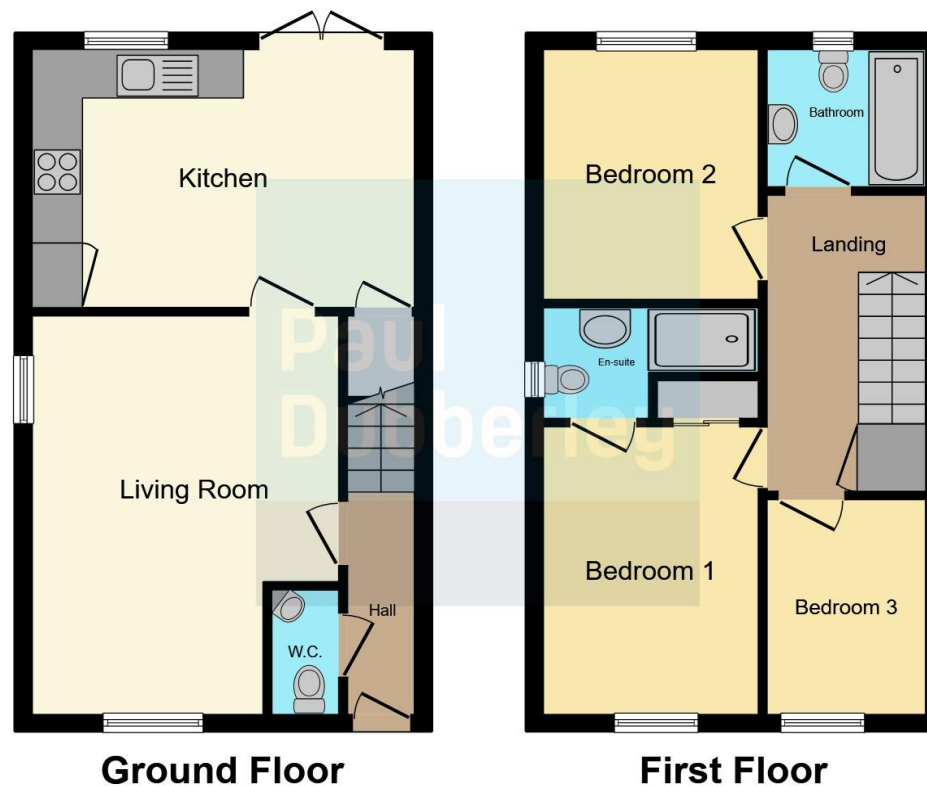
Bathroom

Having a double glazed window to the rear elevation, part tiled, bath with shower over, low level WC, wash hand basin extractor fan and central heating radiator.









This floor plan is for illustrative purposes only. It is not drawn to scale. Any measurements, floor areas (including any total floor area), openings and orientation are approximate. No details are guaranteed, they cannot be relied upon for any purpose and they do not form part of any agreement. No liability is taken for any error, omission or misstatement. A party must rely upon its own inspection(s). Powered by www.focalagent.com

To view this property please contact Paul Dubberley on

T 0121 525 2111
E westbromwich@pauldubberley.co.uk

290 - 292 High Street
 WEST BROMWICH B70 8EN

EPC Rating: B C/T Band B

view this property online PaulDubberley.co.uk/Property/PWB104494

1. MONEY LAUNDERING REGULATIONS Intending purchasers will be asked to produce identification documentation at a later stage and we would ask for your co-operation in order that there will be no delay in agreeing the sale. 2. These particulars do not constitute part or all of an offer or contract. 3. The measurements indicated are supplied for guidance only and as such must be considered incorrect. Potential buyers are advised to recheck measurements before committing to any expense. 4. We have not tested any apparatus, equipment, fixtures, fittings or services and it is in the buyers interest to check the working condition of any appliances.

Paul Dubberley is a trading name of Connells Residential which is registered in England and Wales under company number 1489613, Registered Office is Cumbria House, 16-20 Hockliffe Street, Leighton Buzzard, Bedfordshire, LU7 1GN. VAT Registration Number is 500 2481 05.

see all our properties at www.pauldubberley.co.uk | www.rightmove.co.uk | www.zoopla.co.uk

Property Ref: PWB104494 - 0003

