

for sale

offers over **£190,000** Freehold

**Paul
Dubberley**



Hill Top West Bromwich B70 0QA

Hill Top West Bromwich B70 0QA



Property Description

DO YOU HAVE A PROPERTY TO SELL?

We offer FREE selling valuations

DO YOU NEED A MORTGAGE?

Our fully qualified mortgage experts offer mortgage & remortgage advice

Cloakroom

Having a double glazed window to the side elevation, part tiled with low level WC, wash hand basin and central heating boiler.

Lounge

27' 1" into bay x 13' 5" (8.26m into bay x 4.09m)

Having a double glazed bay window to the front elevation, double glazed window to the rear, wall lights, TV point and two central heating radiators.

Kitchen

16' 3" x 7' 9" into door recess (4.95m x 2.36m into door recess)

Having two double glazed windows the side elevation, fitted kitchen with a range of wall and bas units, with worksurfaces over, one bowl sink and drainer, electric oven and gas hob, with cookerhood over, central heating radiator and door to garden.

Landing

Having a double glazed window to the side elevation, stairs from the hallway, loft access and doors to.

Bedroom One

13' 5" into recess x 12' 6" (4.09m into recess x 3.81m)

Having two double glazed windows to the front elevation and central heating radiator.

Bedroom Two

10' 3" max x 7' 5" (3.12m max x 2.26m)

Having a double glazed window to the rear elevation and central heating radiator.

Bedroom Three

10' 4" x 6' 7" (3.15m x 2.01m)

Having central heating radiator.

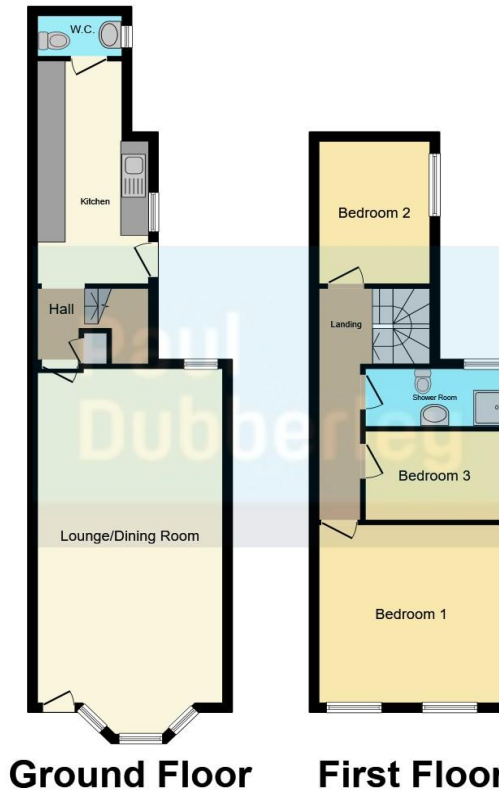
Shower Room

Having a double glazed window to the rear elevation, part tiled with shower cubicle, low level WC, wash hand basin and central heating radiator.









This floor plan is for illustrative purposes only. It is not drawn to scale. Any measurements, floor areas (including any total floor area), openings and orientation are approximate. No details are guaranteed, they cannot be relied upon for any purpose and they do not form part of any agreement. No liability is taken for any error, omission or misstatement. A party must rely upon its own inspection(s). Powered by www.focalagent.com

To view this property please contact Paul Dubberley on

T 0121 525 2111
E westbrom@pauldubberley.co.uk

290 - 292 High Street
WEST BROMWICH B70 8EN

EPC Rating: D

view this property online PaulDubberley.co.uk/Property/PWB103906

1. MONEY LAUNDERING REGULATIONS Intending purchasers will be asked to produce identification documentation at a later stage and we would ask for your co-operation in order that there will be no delay in agreeing the sale. 2. These particulars do not constitute part or all of an offer or contract. 3. The measurements indicated are supplied for guidance only and as such must be considered incorrect. Potential buyers are advised to recheck measurements before committing to any expense. 4. We have not tested any apparatus, equipment, fixtures, fittings or services and it is in the buyers interest to check the working condition of any appliances.

Paul Dubberley is a trading name of Connells Residential which is registered in England and Wales under company number 1489613, Registered Office is Cumbria House, 16-20 Hockliffe Street, Leighton Buzzard, Bedfordshire, LU7 1GN. VAT Registration Number is 500 2481 05.

see all our properties at www.pauldubberley.co.uk | www.rightmove.co.uk | www.zoopla.co.uk

Property Ref: PWB103906 - 0002

