



Flat 1, Bybrook, 6 Station Road - CT21 5PN

Guide Price **£219,995**

Approximate Gross Internal Area = 48 sq m / 520 sq ft

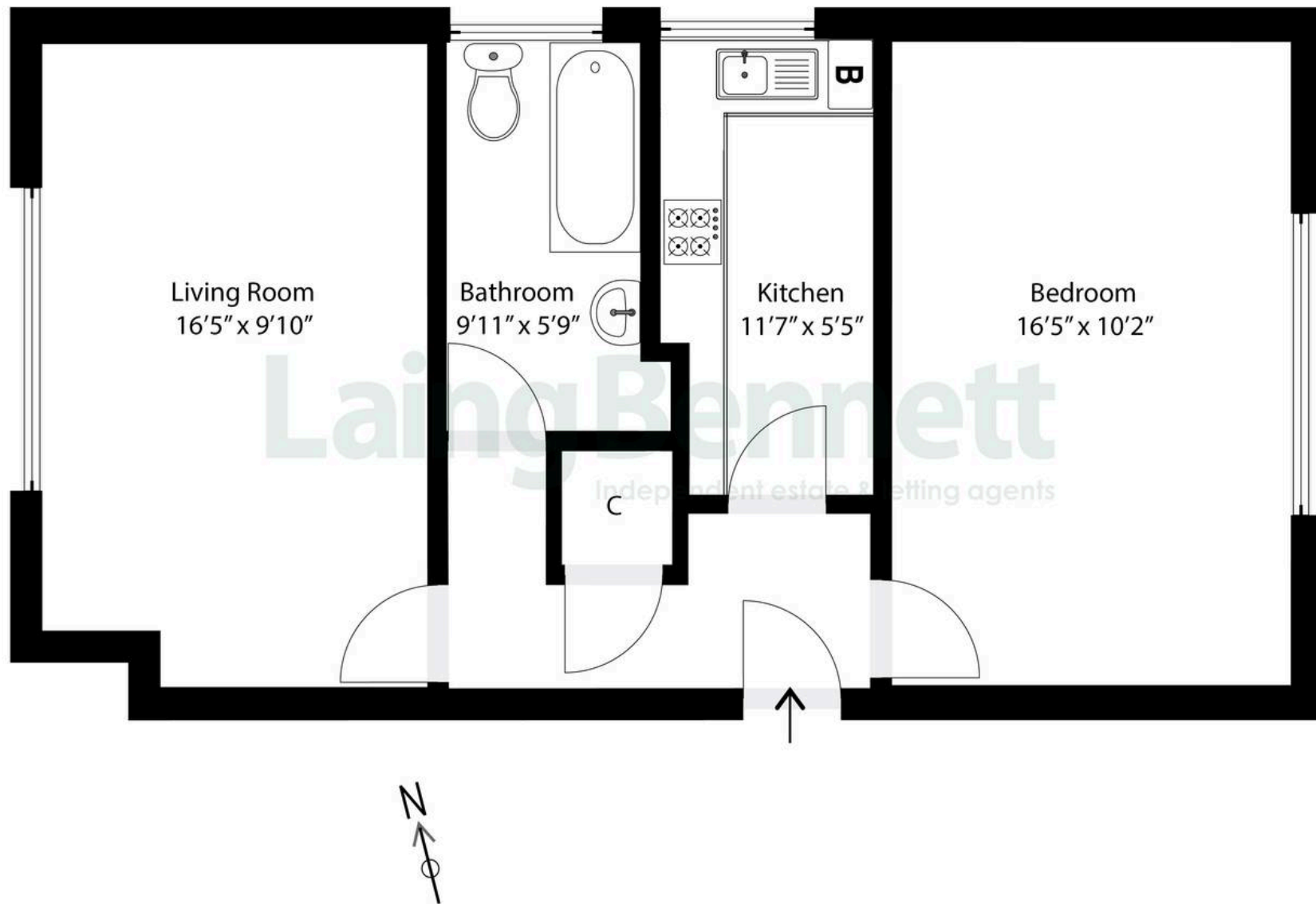


Illustration for Identification purposes only. Measurements are approximate. Dimensions given are between the widest points.
Not to scale. Outbuildings are not shown in actual location.
© Unauthorised reproduction prohibited - chriskemps@hotmail.com



Flat 1

Bybrook, Hythe

A delightful one bedroom ground floor apartment ideally located close to the heart of Hythe, just moments from the high street and local amenities. This well positioned home offers a spacious living room, kitchen, good sized bedroom and bathroom. The apartment provides comfortable living in a sought-after location. Residents benefit from beautifully maintained communal gardens and convenient allocated parking space on the front driveway. Whether you're a first-time buyer, downsizing, or seeking a weekend retreat, this property offers a fantastic opportunity to enjoy coastal living with all the essentials just a short stroll away. Leasehold and share of Freehold. No forward chain.

Council Tax band: B

Tenure: Leasehold

EPC Energy Efficiency Rating: C

EPC Environmental Impact Rating: C



Laing Bennett

Laing Bennett Ltd, The Estate Office, 8 Station Road – CT18 8HP

01303 863393

info@laingbennett.co.uk

www.laingbennett.co.uk/

DISCLAIMER – These details are for guidance only and do not form part of an offer or contract. Measurements are approximate. Laing Bennett Ltd and the Vendor/Landlord accept no liability. Services and appliances are untested. Applicants must make their own checks. Items shown may not be included. No staff have authority to give warranties.