

for sale

guide price **£325,000** Freehold



Willingsworth Road Wednesbury WS10 7NJ

A Freehold building that is configured as; Entrance Porch, Entrance Hall, Utility Room, Cloakroom, Kitchen, Five Bedrooms, and Five En Suites. The surrounding areas offer excellent transport links including Wednesbury Parkway tram stop that provide links into Birmingham and Wolverhampton city centre



Property Details

Auctioneer's Comments This property is offered through Modern Method of Auction. Should you view, offer or bid your data will be shared with the Auctioneer, iamsold Limited. This method requires both parties to complete the transaction within 56 days, allowing buyers to proceed with mortgage finance (subject to lending criteria, affordability and survey).

The buyer is required to sign a reservation agreement and make payment of a non-refundable Reservation Fee of 4.5% of the purchase price including VAT, subject to a minimum of £6600.00 including VAT. This fee is paid in addition to purchase price and will be considered as part of the chargeable consideration for the property in the calculation for stamp duty liability. Buyers will be required to complete an identification process with iamsold and provide proof of how the purchase would be funded.

The property has a Buyer Information Pack containing documents about the property. The documents may not tell you everything you need to know, so you must complete your own due diligence before bidding. A sample of the Reservation Agreement and terms and conditions are contained within this pack. The buyer will also make payment of no more than £349 inc. VAT towards the preparation cost of the pack. Please confirm exact costs with the auctioneer.

The estate agent and auctioneer may recommend the services of other providers to you, in which they will be paid for the referral. These services are optional, and you will be advised of any payment, in writing before any services are accepted. Listing is subject to a start price and undisclosed reserve price that can change.

Agents Notes

We have been asked to sell the freehold building. We ask that any interested parties research the property and identify its use through Sandwell Metropolitan Borough Council planning reference DC/23/67927, checking suitability as to this purchase type before proceeding. This property may be suitable for a number of uses subject to local authority requirements.

Entrance Porch

Entrance Hall

Kitchen

Utility Room

Cloakroom

Bedroom One

En Suite

Bedroom Two

En Suite

Bedroom Three

En Suite

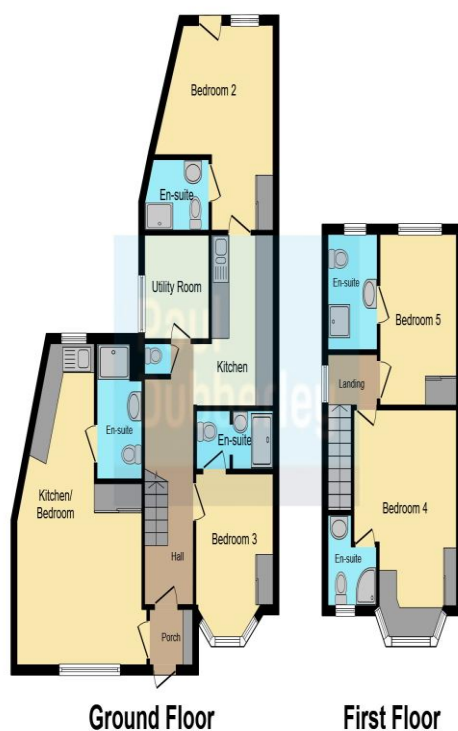
Bedroom Four

En Suite

Bedroom Five

En Suite





This floorplan is for illustrative purposes only and is not drawn to scale. Measurements, floor-areas, openings and orientations are approximate. They should not be relied upon for any purpose and do not form any part of an agreement. No liability is taken for any error or mis-statement. All parties must rely on their own inspections.

1. MONEY LAUNDERING REGULATIONS Intending purchasers will be asked to produce identification documentation at a later stage and we would ask for your co-operation in order that there will be no delay in agreeing the sale. 2. These particulars do not constitute part or all of an offer or contract. 3. The measurements indicated are supplied for guidance only and as such must be considered incorrect. Potential buyers are advised to recheck measurements before committing to any expense. 4. We have not tested any apparatus, equipment, fixtures, fittings or services and it is in the buyers interest to check the working condition of any appliances.

Paul Dubberley is a trading name of Connells Residential which is registered in England and Wales under company number 1489613, Registered Office is Cumbria House, 16-20 Hockliffe Street, Leighton Buzzard, Bedfordshire, LU7 1GN. VAT Registration Number is 500 2481 05.

To view this property please contact Paul Dubberley on

T 0121 505 3533
E wednesbury@pauldubberley.co.uk

97 Walsall Street
 WEDNESBURY WS10 9BY

Tenure: Freehold

EPC Rating: C

Property Ref: PWE103672 - 0003

see all our properties at www.pauldubberley.co.uk | www.rightmove.co.uk | www.zoopla.co.uk