

for sale

offers in excess of **£260,000** Freehold



Brunswick Park Road Wednesbury WS10 9HH

****THREE BEDROOM END TERRACE HOME**** Arranged over three floors and beautifully presented throughout. The property is located in the high demand area of Brunswick Park with walking distance to local shops, amenities, excellent public transport links and easy access to motorway networks.



Property Details

Access Via

Front aspect door.

Entrance Hall

Doors to living room and dining room.

Living Room 10' 8" x 13' 10" (3.25m x 4.22m)

Front aspect double glazed window and radiator.

Dining Room 15' 10" x 13' 5" (4.83m x 4.09m)

Rear aspect double glazed window.

Kitchen 14' 7" x 7' 10" (4.45m x 2.39m)

Rear aspect patio doors and side aspect double glazed window, wall and base units, inset sink and drainer, electric over, gas hob and extractor over, Part tiled walls.

Landing

Side aspect double glazed window and doors leading to bedrooms and bathroom.

First Floor

Bedroom One 11' 11" x 12' 7" (3.63m x 3.84m)

Two front aspect double glazed windows.

Bedroom Two 10' 2" x 9' 10" (3.10m x 3.00m)

Rear aspect double glazed window and radiator.

Family Bathroom 11' 5" x 8' (3.48m x 2.44m)

Rear aspect double glazed window, shower cubicle with shower head, bath, wash basin in vanity unit, w/c and part tiled walls.

Second Floor

Bedroom Three 13' 4" x 12' 11" (4.06m x 3.94m)

Sky lights and storage cupboards.

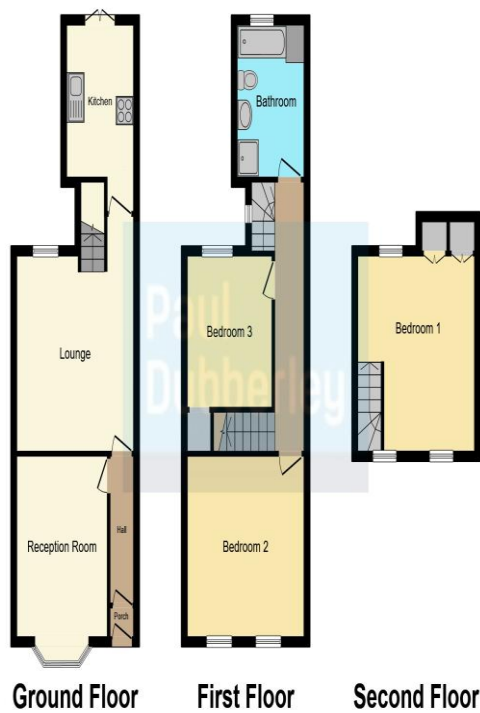
Front Garden

Gated front garden.

Rear Garden

Decking area, Part slabbed and lawn area.





To view this property please contact Paul Dubberley on

T 0121 505 3533
E wednesbury@pauldubberley.co.uk

97 Walsall Street
 WEDNESBURY WS10 9BY

Tenure: Freehold

EPC Rating: D

Property Ref: PWE103187 - 0007

This floor plan is for illustrative purposes only. It is not drawn to scale. Any measurements, floor areas (including any total floor area), openings and orientation are approximate. No details are guaranteed, they cannot be relied upon for any purpose and they do not form part of any agreement. No liability is taken for any error, omission or misstatement. A party must rely upon its own inspection(s). Powered by www.focalagent.com

1. MONEY LAUNDERING REGULATIONS Intending purchasers will be asked to produce identification documentation at a later stage and we would ask for your co-operation in order that there will be no delay in agreeing the sale. 2. These particulars do not constitute part or all of an offer or contract. 3. The measurements indicated are supplied for guidance only and as such must be considered incorrect. Potential buyers are advised to recheck measurements before committing to any expense. 4. We have not tested any apparatus, equipment, fixtures, fittings or services and it is in the buyers interest to check the working condition of any appliances.

Paul Dubberley is a trading name of Connells Residential which is registered in England and Wales under company number 1489613, Registered Office is Cumbria House, 16-20 Hockliffe Street, Leighton Buzzard, Bedfordshire, LU7 1GN. VAT Registration Number is 500 2481 05.

see all our properties at www.pauldubberley.co.uk | www.rightmove.co.uk | www.zoopla.co.uk