



4 Bexley High Street, Bexley, Kent
DA5 1AD

Tel: 01322 522111

Email: bexley@village-estates.com

www.village-estates.com



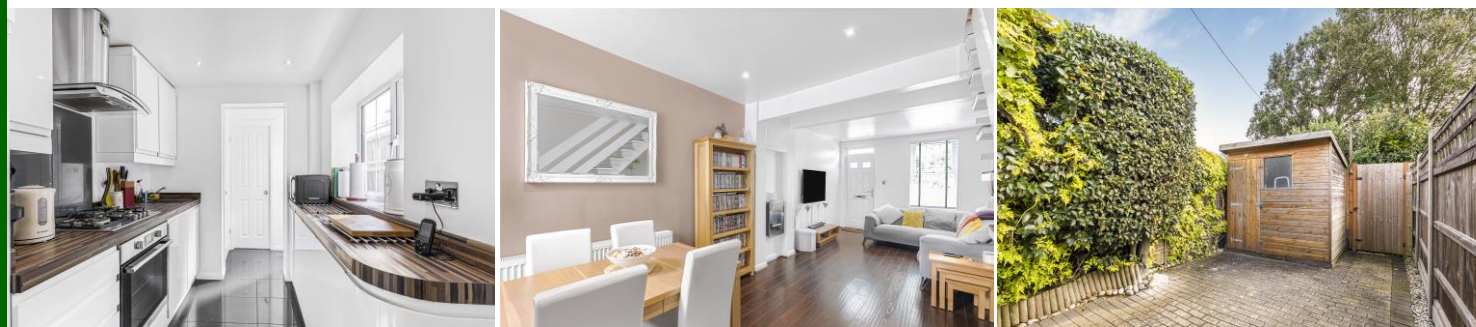
* SPACIOUS TWO BEDROOM COTTAGE * PRIVATE REAR GARDEN *

* PARKING TO FRONT * GROUND FLOOR BATHROOM * FIRST FLOOR W/C *

* CLOSE TO LOCAL AMENITIES * GOOD SCHOOL CATCHMENT *

* VIEWING ADVISED * WELL PRESENTED THROUGHOUT *

* OPEN PLAN RECEPTION ROOM *



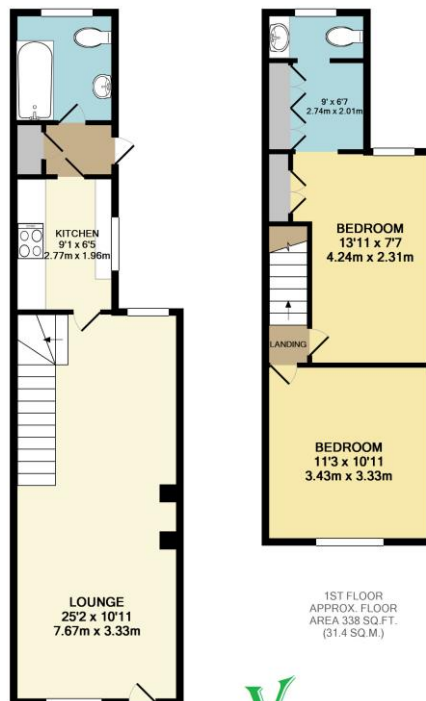
27 Leyton Cross Road
Wilmington, DA2 7AW

Guide Price £390,000-£400,000

Village Estates are pleased to offer to the market this spacious and well presented TWO BEDROOM COTTAGE situated in a popular location within easy reach of local schools, motorway links and amenities. Offering two double bedrooms, spacious reception room, off road parking and private rear garden. Internal viewing comes highly recommended....



EPC RATING D
COUNCIL TAX BAND C



GROUND FLOOR
APPROX. FLOOR
AREA 404 SQ.FT.
(37.6 SQ.M.)

1ST FLOOR
APPROX. FLOOR
AREA 338 SQ.FT.
(31.4 SQ.M.)

TOTAL APPROX. FLOOR AREA 742 SQ.FT. (69.0 SQ.M.)

Whilst every attempt has been made to ensure the accuracy of the floor plan contained here, measurements of doors, windows, rooms and any other items are approximate and no responsibility is taken for any error, omission, or mis-statement. This plan is for illustrative purposes only and should be used as such by any prospective purchaser. The services, systems and appliances shown have not been tested and no guarantee as to their operability or efficiency can be given
Made with Metropix ©2018

We understand this property is Freehold.

VIEWING:

Via Village Estates on 01322 522111
Monday to Friday 9am-6pm, Saturday 9am-5pm

SELLING YOUR HOME?

If you are thinking of selling your own property, VILLAGE ESTATES will be pleased to provide you with a free market appraisal for sale purposes and professional marketing advice **FREE OF CHARGE, WITHOUT OBLIGATION**. Call one of our experienced sales staff on 01322 522111.

Whilst we endeavour to make our sales details reliable and accurate they should not be relied on as representations or statements of fact, and do not form any part of an offer or contract. The Seller does not make or give nor do we or our employees have authority to make or give any representation or warranty in relation to the property. We would strongly recommend that all the information which we provide about the property is verified by yourself on inspection and also by your conveyancer, especially where statements have been made by us to the effect that the information provided has not been verified. If there are any other points which are of particular importance to you, we would be only too happy to check the information and indeed confirm the availability of the property. Please contact the above office to arrange a convenient viewing appointment.