





84 Middleton Close

Bracklesham Bay, Chichester

Neatly presented 2 bedroom mid terrace house in Bracklesham Bay offered to the market with no forward chain.

Located in the sought-after coastal village of Bracklesham Bay, this neatly presented two-bedroom mid-terrace home offers comfortable living with views over the green.

Upon entering the property, you are greeted by a well-equipped kitchen with generous cupboard space, perfect for everyday cooking and storage. Across the hall, there is a downstairs WC and a useful cupboard that could serve as a utility space. To the rear of the property, the spacious sitting room provides ample room for both seating and dining, with French doors opening onto the garden, creating a bright and welcoming living area.

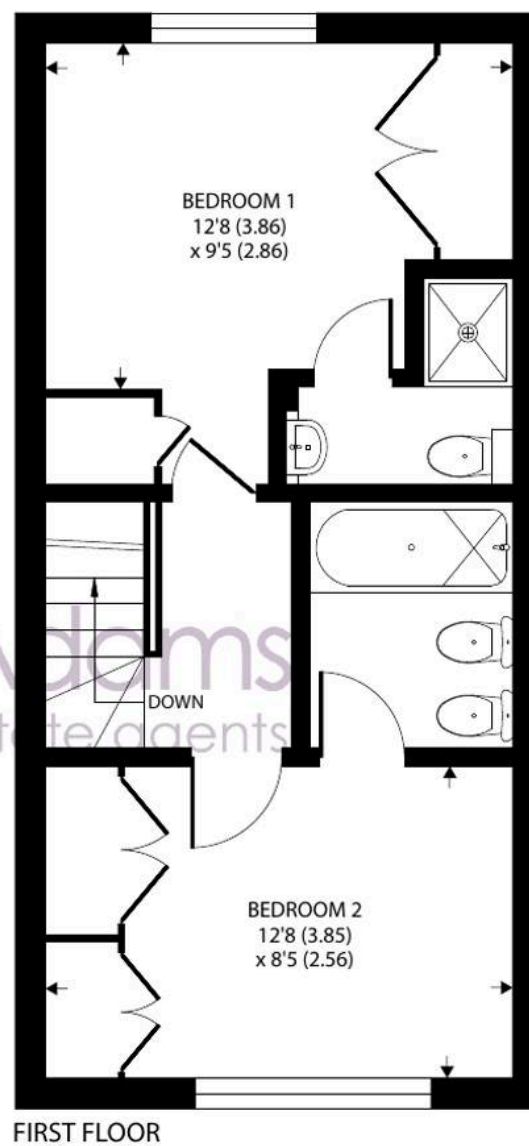
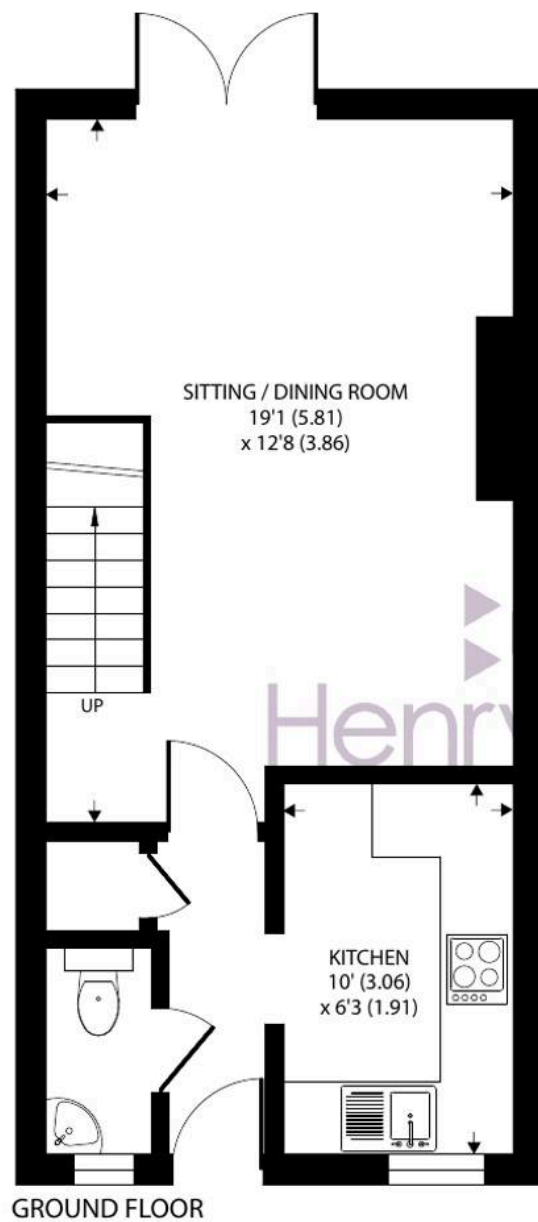
Upstairs, there are two generously sized double bedrooms, each benefiting from its own en suite facilities—ideal for ensuring comfort and privacy. The principal bedroom features a modern en suite with a walk-in shower, while the second bedroom enjoys an en suite with a shower over bath.

The low-maintenance east-facing rear garden is neatly laid out with gravel and a decking area, providing a pleasant space to relax or entertain. A timber shed offers additional storage or the potential for a small workshop. The property also benefits from a private parking space for one vehicle.

Ideally situated within easy reach of the beach, local amenities, and transport links.







Approximate Area = 710 sq ft / 65.9 sq m

For identification only - Not to scale







84 Middleton Close

Bracklesham Bay, Chichester

Council Tax band: C £2,080.97 2025/26

Tenure: Freehold

EPC Energy Efficiency Rating: B

- No Forward Chain
- Two Bedroom Mid Terrace House
- Neatly Presented
- En Suite to All Bedrooms
- Open Plan Living and Dining Space
- Low Maintenance Garden
- Private Parking Space

Situated at Bracklesham Bay, a coastal village some 7 miles south-west of the City of Chichester. The beach is a popular place to enjoy a variety of water sports or admire the lovely view towards the Isle of Wight. 'Billy's' beachside café/restaurant and some local shops are close by, although further amenities can be found at the nearby village of East Wittering, including infants/junior school, GP surgery, chemists, dentist, library and a range of quality independent shops. There is a regular bus service to Chichester City centre with its range of shops, restaurants, cinemas, Festival Theatre and main line railway station. Goodwood Racecourse and Motor Circuit are some 3 miles beyond Chichester.



Henry Adams – East Wittering

Henry Adams LLP, 14 Shore Road, East Wittering – PO20 8DZ

01243 672721 • eastwittering@henryadams.co.uk • www.henryadams.co.uk/

Agents Note – Our particulars are for guidance only and are intended to give a fair overall summary of the property. They do not form part of any contract or offer, and should not be relied upon as a statement or representation of fact. Measurements, areas and distances are approximate only. Photographs may include lifestyle shots and pictures of local views. No undertaking is given as to the structural condition of the property, or any necessary consents or the