



10 Russell Road, West Wittering

Guide Price £450,000

10 Russell Road

West Wittering, Chichester

A great opportunity to purchase an extended three-bedroom semi-detached property on a popular road in West Wittering. This charming home measures 1082 sq ft and offers practical living space.

The ground floor features a cosy living room with a wood-burning stove, opening into a conservatory that overlooks the rear garden. The kitchen-breakfast room includes an oven and hob, with space for a fridge-freezer. There is a small utility room off the kitchen, with plumbing for a washing machine and access to the rear garden. Two double bedrooms and a bathroom complete the ground floor.

Upstairs, the principal bedroom includes an en suite bathroom. The property offers ample off-road parking at the front and a rear garden with a lawn, patio, mature borders, a timber potting shed, and an additional storage shed. This home provides a comfortable living space in a desirable West Wittering location.

Council Tax band: B

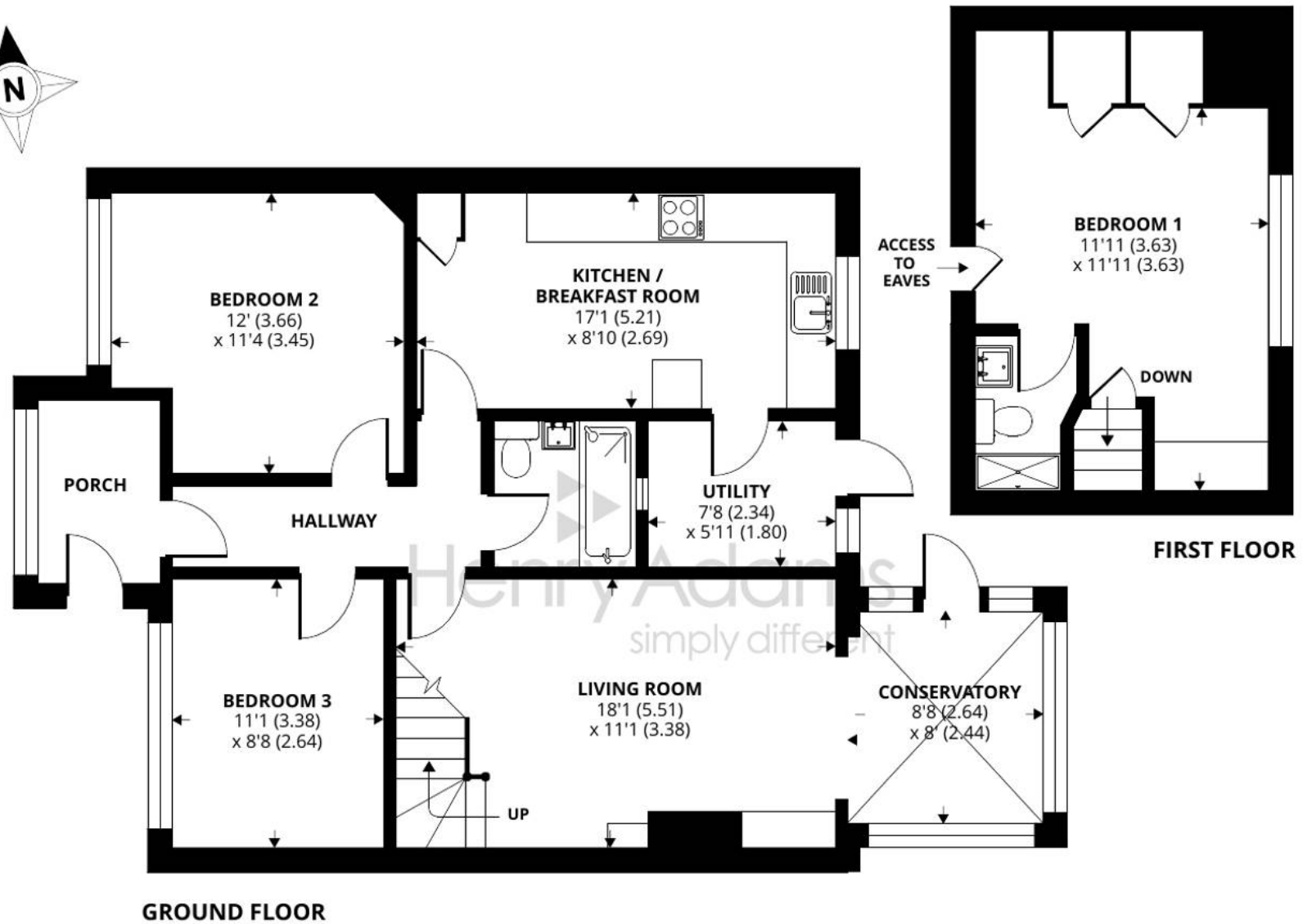
Tenure: Freehold

EPC Energy Efficiency Rating: D

EPC Environmental Impact Rating: D

- Semi-Detached Chalet Bungalow
- Extended
- Close To Beach
- Private Rear Garden
- Ample Off Road Parking
- Close To Shops
- En Suite
- 1,082 Sq Ft Of Accommodation





10 Russell Road

Approximate Area = 1082 sq ft / 100.5 sq m

For identification only - Not to scale



Floor plan produced in accordance with RICS Property Measurement Standards incorporating International Property Measurement Standards (IPMS2 Residential). © ntechcom 2022. Produced for Henry Adams. REF: 915913



Henry Adams - East Wittering

Henry Adams LLP, 14 Shore Road, East Wittering - PO20 8DZ

01243 672721

eastwittering@henryadams.co.uk

www.henryadams.co.uk/

Agents Note - Our particulars are for guidance only and are intended to give a fair overall summary of the property. They do not form part of any contract or offer, and should not be relied upon as a statement or representation of fact. Measurements, areas and distances are approximate only. Photographs may include lifestyle shots and pictures of local views. No undertaking is given as to the structural condition of the property, or any necessary consents or the operating ability or efficiency of any service, system or appliance. Please ask if you would like further information, especially before you travel to the property.